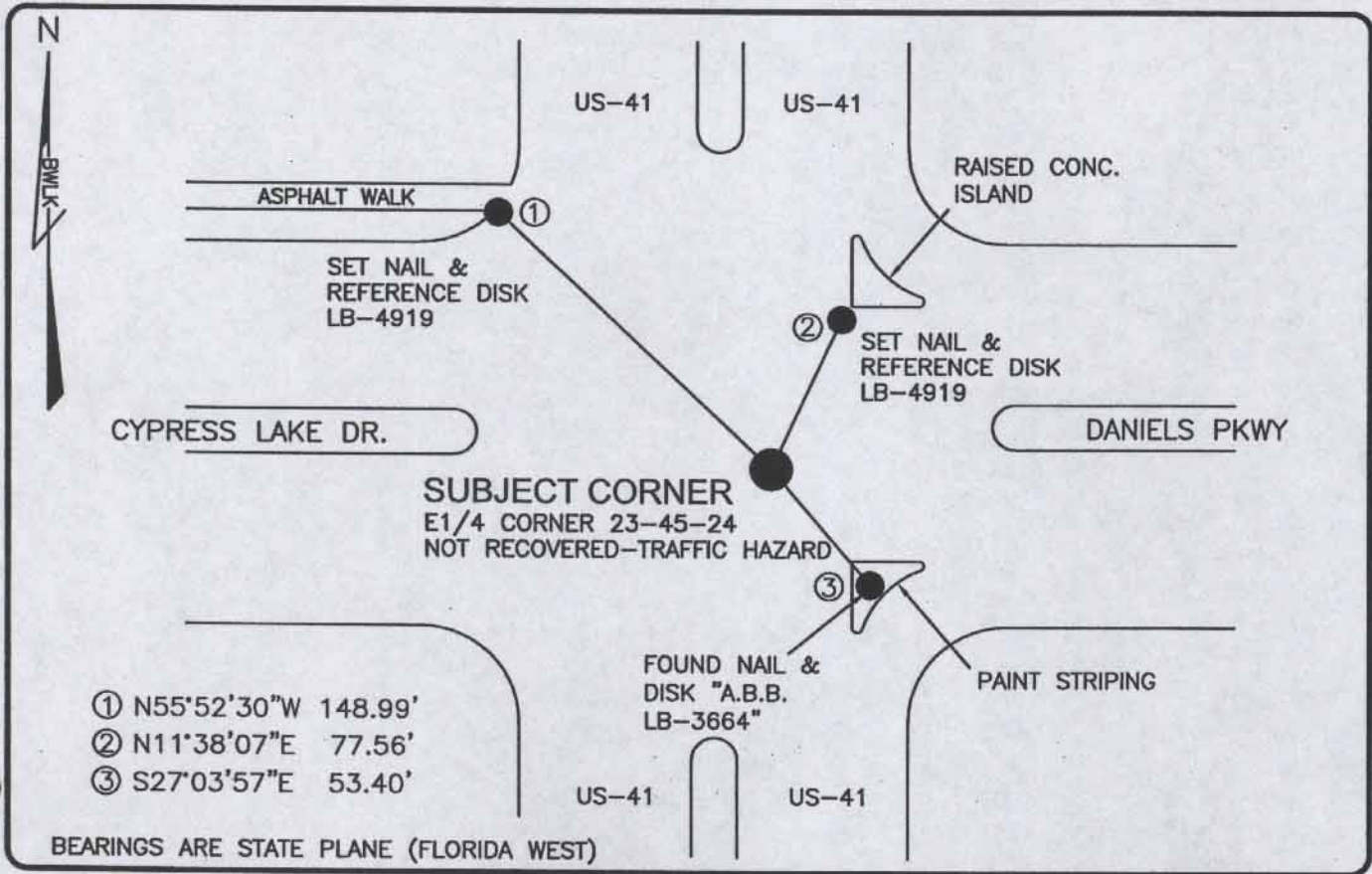


LAND CORNER RECORD

PUBLIC WORKS  
LEE COUNTY, FLORIDA

Address - 1500 Monroe St., Ft. Myers, Fla. 33901

Phone : (239) 479-8900

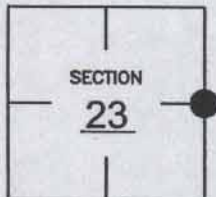


COMMENTS:

GENERALLY ACCEPTED CORNER BY LOCAL SURVEYORS.  
HELD CO-ORDINATE VALUES IN CCR 68953.

CORNER DESCRIPTION

E1/4 Corner  
Section 23  
Township 45  
Range 24



HORIZONTAL POSITION INFORMATION

Florida West Zone, NAD 1983(1990 Adjustment)  
 Northing(ft) 804251.47 Easting(ft) 698201.17  
 Latitude 26°32'46.44764" Longitude 81°52'17.11666"  
 Scale Factor 0.99994

EXISTING CERTIFIED CORNER RECORDS

| Document No. | Date            |
|--------------|-----------------|
| <u>17738</u> | <u>11-15-83</u> |
| <u>39863</u> | <u>6-11-91</u>  |
| <u>68953</u> | <u>9-11-00</u>  |
|              |                 |
|              |                 |

The above documents are based on FDEP Bureau of Surveying and Mapping Record Information.

I hereby certify the monument and accessories shown above were field located on 12-12-03.

*Scott C. Whitaker*  
 SCOTT C. WHITAKER  
 Professional Surveyor and Mapper  
 Florida Certificate No. 4324  
 Date Signed 4-07-04

BEAN, WHITAKER, LUTZ & KAREH, INC. (LB 4919)  
 13041 McGregor Boulevard  
 Fort Myers, Florida 33919-5910  
 Phone: (239) 481-1331

POINT NO. 6029

BLM REFERENCE NO. T45SR24E600340