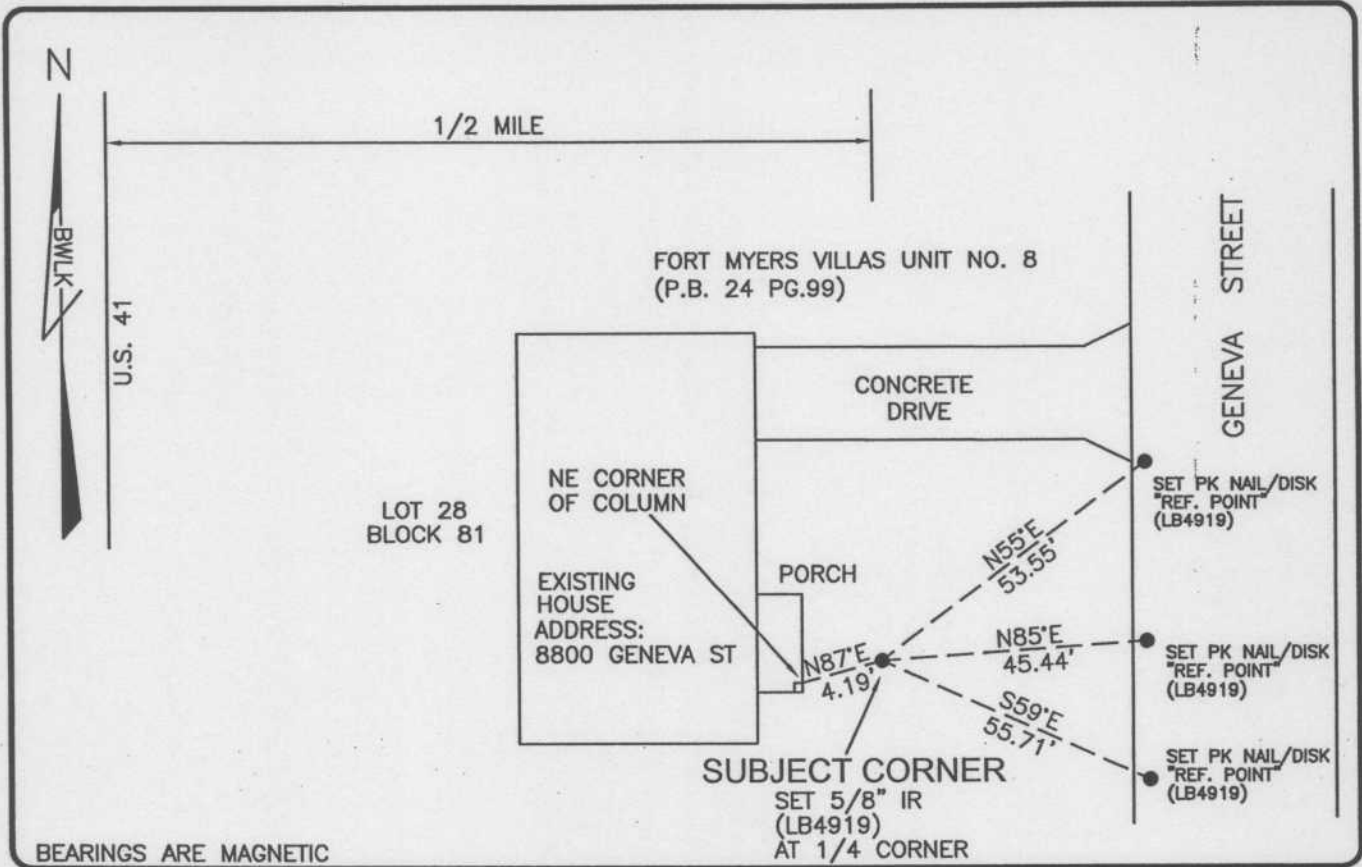


LAND CORNER RECORD

PUBLIC WORKS
LEE COUNTY, FLORIDA

Address - 1500 Monroe St., Ft. Myers, Fla. 33901

Phone : (239) 479-8900

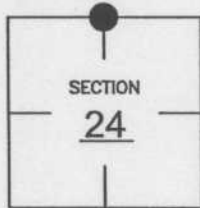


BEARINGS ARE MAGNETIC

COMMENTS:
CORNER RE-ESTABLISHED FROM SUBDIVISION TIES SHOWN ON THE RECORD PLAT OF "FORT MYERS VILLAS-UNIT NO. 8" AS RECORDED IN PLAT BOOK 24 AT PAGE 99. VERIFIED SECTION DIMENSIONS WITH HISTORICAL RECORDS.

CORNER DESCRIPTION

N 1/4 Corner
Section 24
Township 45
Range 24



HORIZONTAL POSITION INFORMATION

Florida West Zone, NAD 1983(1990 Adjustment)

Northing(ft) 806944.40 Easting(ft) 700790.02

Latitude 26°33'13.09228" Longitude 81°51'48.57681"

Scale Factor 0.99994

EXISTING CERTIFIED CORNER RECORDS

Document No.	Date
NONE	

The above documents are based on FDEP Bureau of Surveying and Mapping Record Information.

I hereby certify the monument and accessories shown above were field located on 03-23-04.

Scott C. Whitaker
SCOTT C. WHITAKER
Professional Surveyor and Mapper
Florida Certificate No. 4324
Date Signed 4-07-04

BEAN, WHITAKER, LUTZ & KAREH, INC. (LB 4919)
13041 McGregor Boulevard
Fort Myers, Florida 33919-5910
Phone: (239) 481-1331

POINT NO. 6115

BLM REFERENCE NO. T45SR24E640400