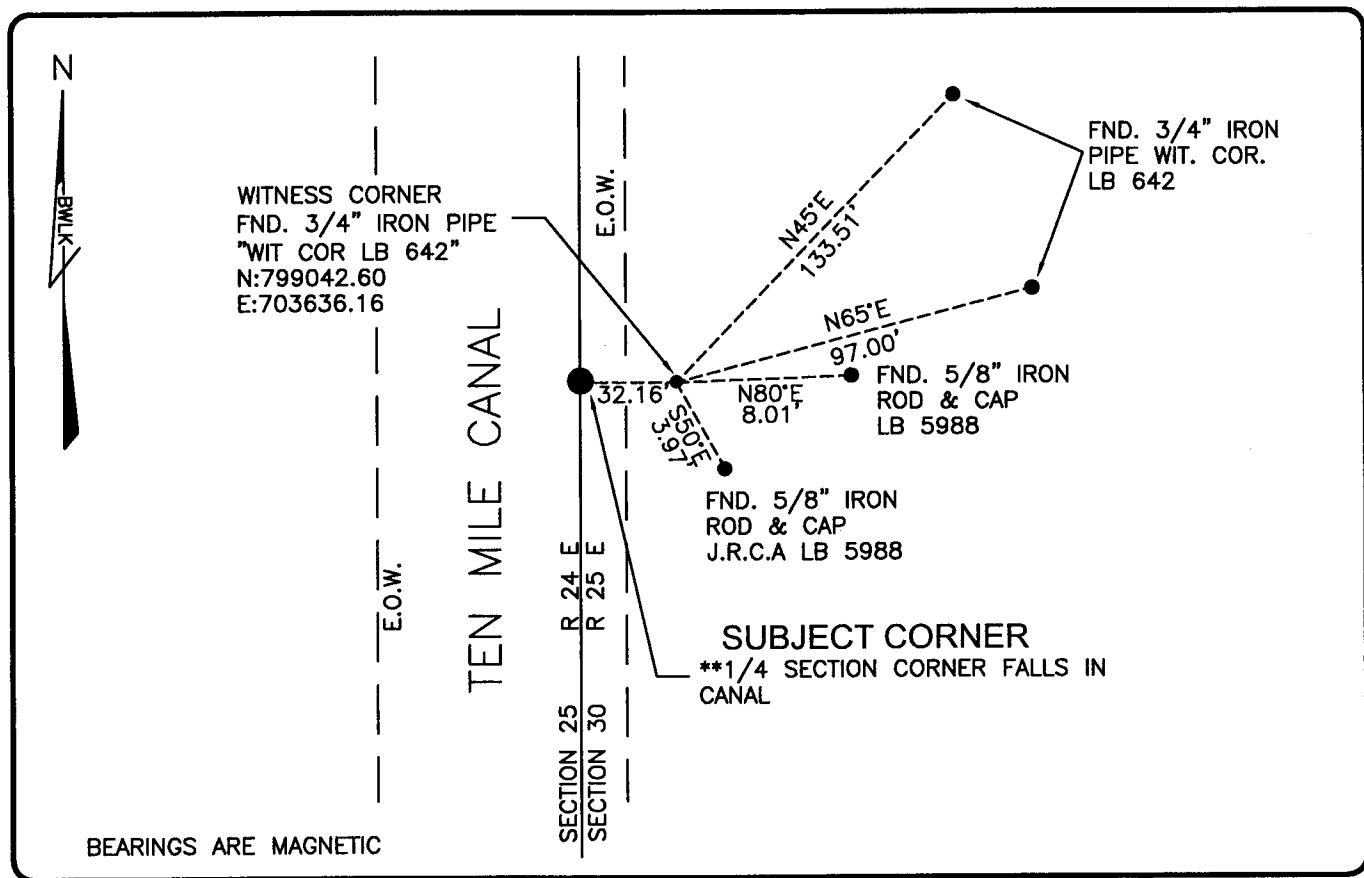


PUBLIC WORKS
LEE COUNTY, FLORIDA

Address - 1500 Monroe St., Ft. Myers, Fla. 33901

Phone : (239) 479-8900



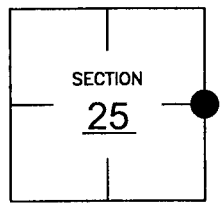
BEARINGS ARE MAGNETIC

COMMENTS:

CORNER DESTROYED DURING CANAL CONSTRUCTION. UTILIZED CCR 71514 TO RE-ESTABLISH LOCATION OF CORNER. VERIFIED LOCATION WITH HISTORICAL RECORDS.

CORNER DESCRIPTION

E 1/4 Corner
 Section 25
 Township 45
 Range 24



HORIZONTAL POSITION INFORMATION

Florida West Zone, NAD 1983(1990 Adjustment)
 Northing(ft) 799042.04 Easting(ft) 703604.00
 Latitude 26d31'54.79555" Longitude 81d51'17.68583"
 Scale Factor 0.99994

EXISTING CERTIFIED CORNER RECORDS

Document No.	Date
<u>15129</u>	<u>9-23-82</u>
<u>71514</u>	<u>4-02-01</u>
_____	_____
_____	_____

The above documents are based on FDEP Bureau of Surveying and Mapping Record Information.

I hereby certify the monument and accessories shown above were field located on 10-23-03

Scott C. Whitaker
 SCOTT C. WHITAKER
 Professional Surveyor and Mapper
 Florida Certificate No. 4324
 Date Signed 1-29-04

BEAN, WHITAKER, LUTZ & KAREH, INC. (LB 4919)
 13041 McGregor Boulevard
 Fort Myers, Florida 33919-5910
 Phone: (239) 481-1331

POINT NO. 6079

BLM REFERENCE NO. T45SR24E700240