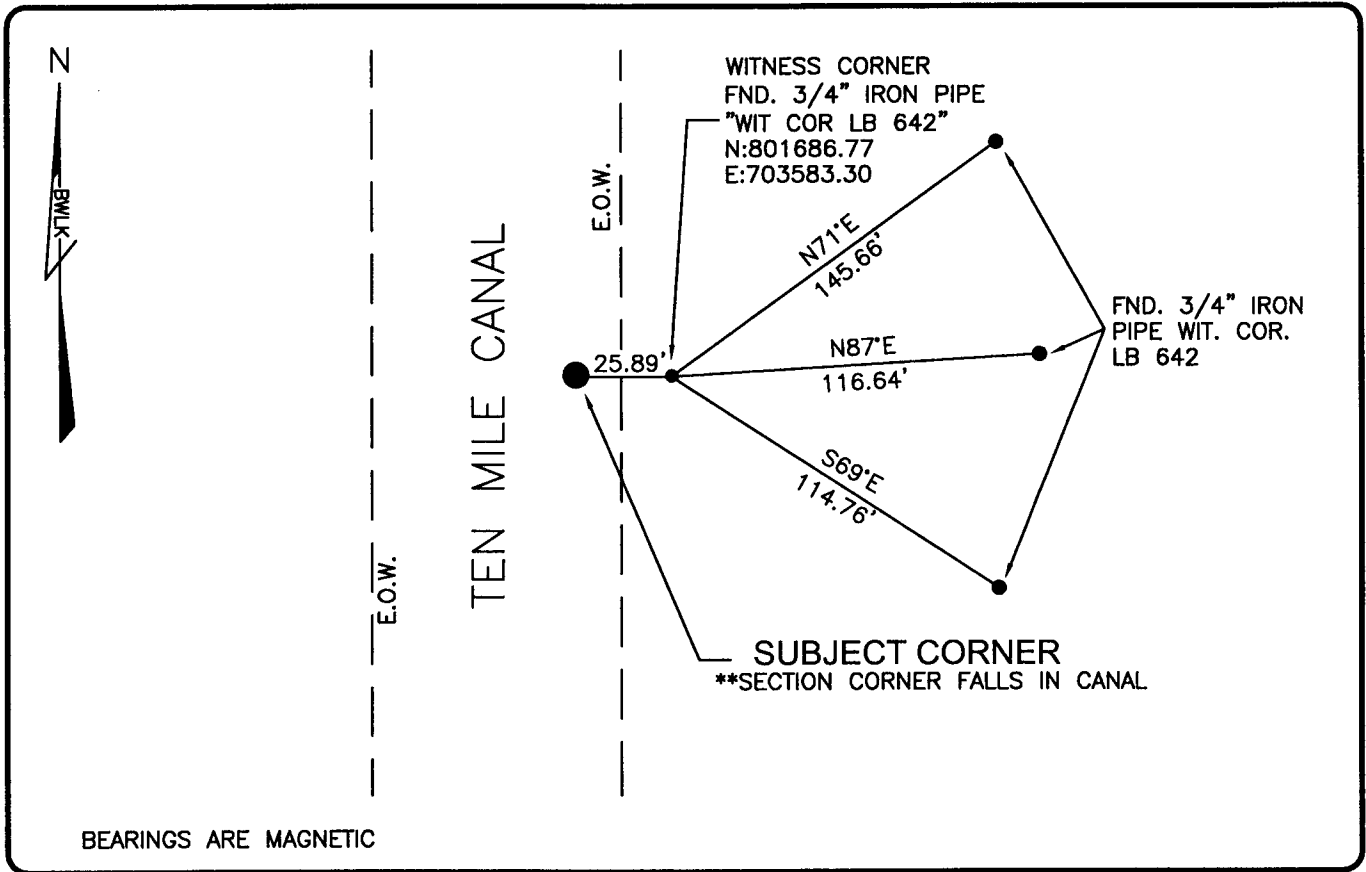


PUBLIC WORKS  
LEE COUNTY, FLORIDA

Address - 1500 Monroe St., Ft. Myers, Fla. 33901

Phone : (239) 479-8900

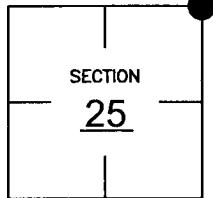


COMMENTS:

CONC POST EXISTED AT CORNER IN 1982 (CCR15130).  
CORNER DESTROYED DURING CANAL CONSTRUCTION.  
UTILIZED CCR 71512 TO RE-ESTABLISH LOCATION OF  
CORNER. VERIFIED LOCATION WITH HISTORICAL RECORDS.

CORNER DESCRIPTION

N.E. Corner  
Section 25  
Township 45  
Range 24



HORIZONTAL POSITION INFORMATION

Florida West Zone, NAD 1983(1990 Adjustment)

Northing(ft) 801686.32 Easting(ft) 703557.41

Latitude 26d32'20.98543" Longitude 81d51'18.16590"

Scale Factor 0.99994

EXISTING CERTIFIED CORNER RECORDS

Document No.	Date
<u>15130</u>	<u>9-23-82</u>
<u>71512</u>	<u>4-02-01</u>
_____	_____
_____	_____

The above documents are based on FDEP Bureau of Surveying and Mapping Record Information.

I hereby certify the monument and accessories shown above were field located on 10-23-03.

*Scott C. Whitaker*  
SCOTT C. WHITAKER  
Professional Surveyor and Mapper  
Florida Certificate No. 4324  
Date Signed 1-29-04

BEAN, WHITAKER, LUTZ & KAREH, INC. (LB 4919)  
13041 McGregor Boulevard  
Fort Myers, Florida 33919-5910  
Phone: (239) 481-1331

POINT NO. 6077

BLM REFERENCE NO. T45SR24E700300