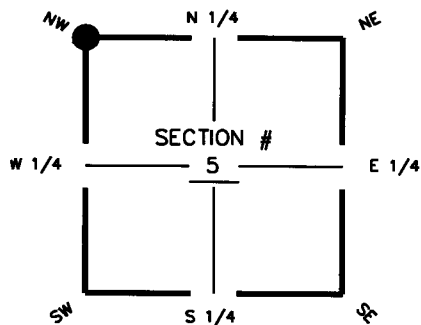


FLORIDA DEPARTMENT OF ENVIRONMENTAL PROTECTION CERTIFIED CORNER RECORD

DOC. # 094496

CORNER DESCRIPTION: **MONUMENTATION DESCRIPTION (EVIDENCE FOUND OR METHOD TO SET)**

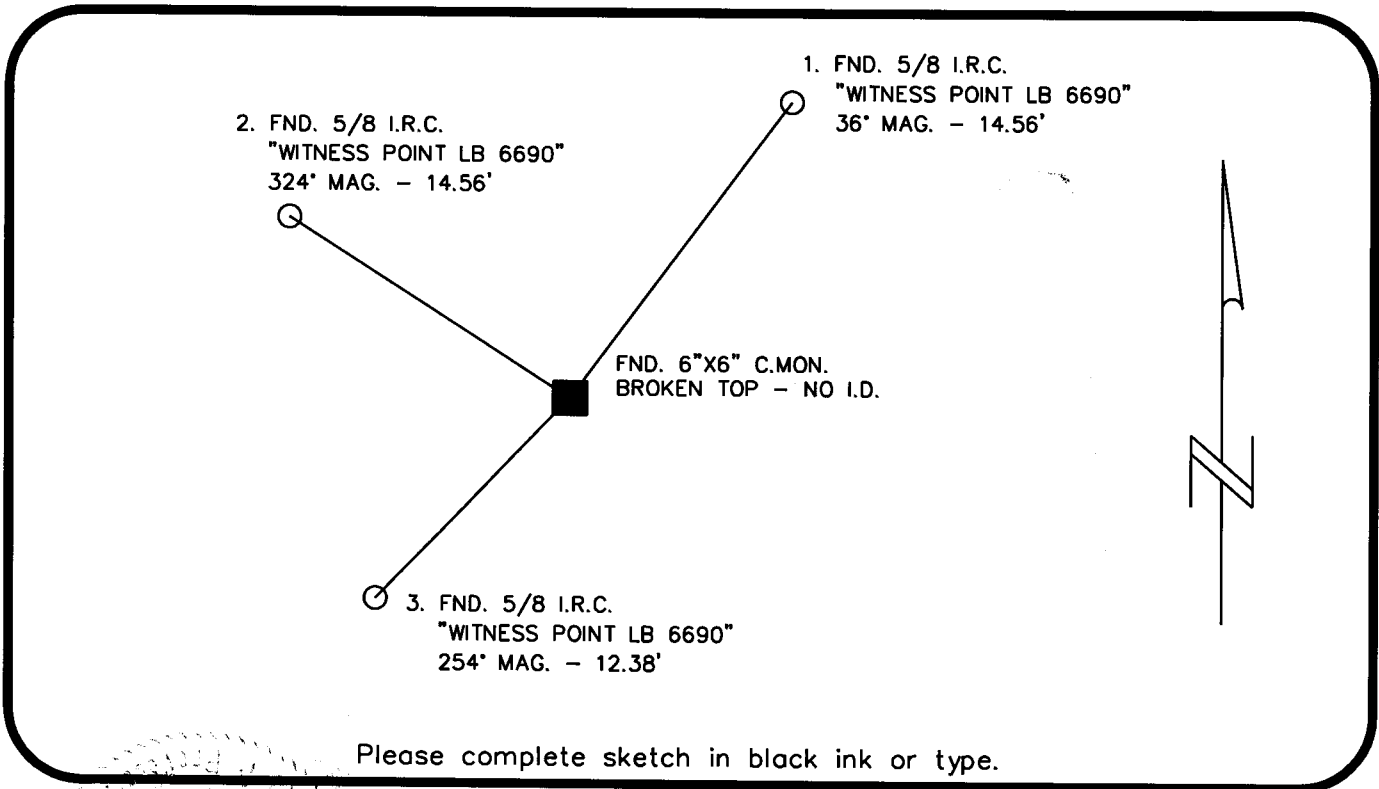
Depict corner with FOUND 6" X 6" CONCRETE MONUMENT BROKEN TOP - NO I.D.



NW corner of Section 5
Twp 45 S, Rge 27 E
Tallahassee Base Meridian,
LEE County(s), Florida

HORIZONTAL POSITION INFORMATION (if determined):

Latitude 26° 35' 56.7627" N. Longitude 81° 38' 46.1270" W.
Y(NORTHING-Ft.) 823605.978 X(EASTING-Ft.) 771794.553 Zone WEST
Convergence 0° 09' 30.3762" Scale factor 0.999956505
Coordinate determination (circle one): Field traverse GPS
Horizontal datum (circle one): NAD27 NAD83(1986) NAD83(1999) other (explain)
Accuracy (circle one): 1st 2nd 3rd other 1:50,000



SURVEYORS' CERTIFICATE:

I certify the monument and accessories indicated above were field located on 04/30/08

[Signature]
SIGNATURE
McKIM & CREED, PA 6541
FIRM OR AGENCY PSM NO.
10970 S. CLEVELAND AVENUE, SUITE 401 6566
ADDRESS LB NO.
FORT MYERS FLORIDA 33907
CITY STATE ZIP
(239) 275-8875 5-22-2008
PHONE NUMBER DATE

SEND ORIGINAL TO:
Department of Environmental Protection
Bureau of Surveying and Mapping
3900 Commonwealth Boulevard
Mail Station 105
Tallahassee, Florida 32399

Processed: D.E.P. USE ONLY MB
B.L.M. - I.D. 200700
QUAD - I.D. 2114 Alva SW

EMBOSSSED SEAL OVER SIGNATURE