

# FLORIDA DEPARTMENT OF ENVIRONMENTAL PROTECTION

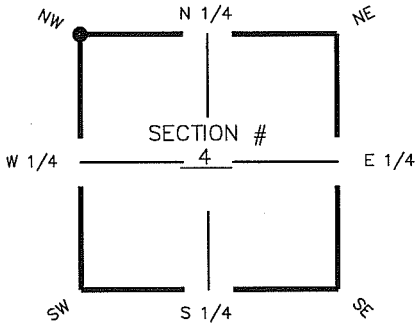
## CERTIFIED CORNER RECORD

A-9

DOC. # \_\_\_\_\_

CORNER DESCRIPTION:      MONUMENTATION DESCRIPTION (EVIDENCE FOUND OR METHOD TO SET)

Depict corner with



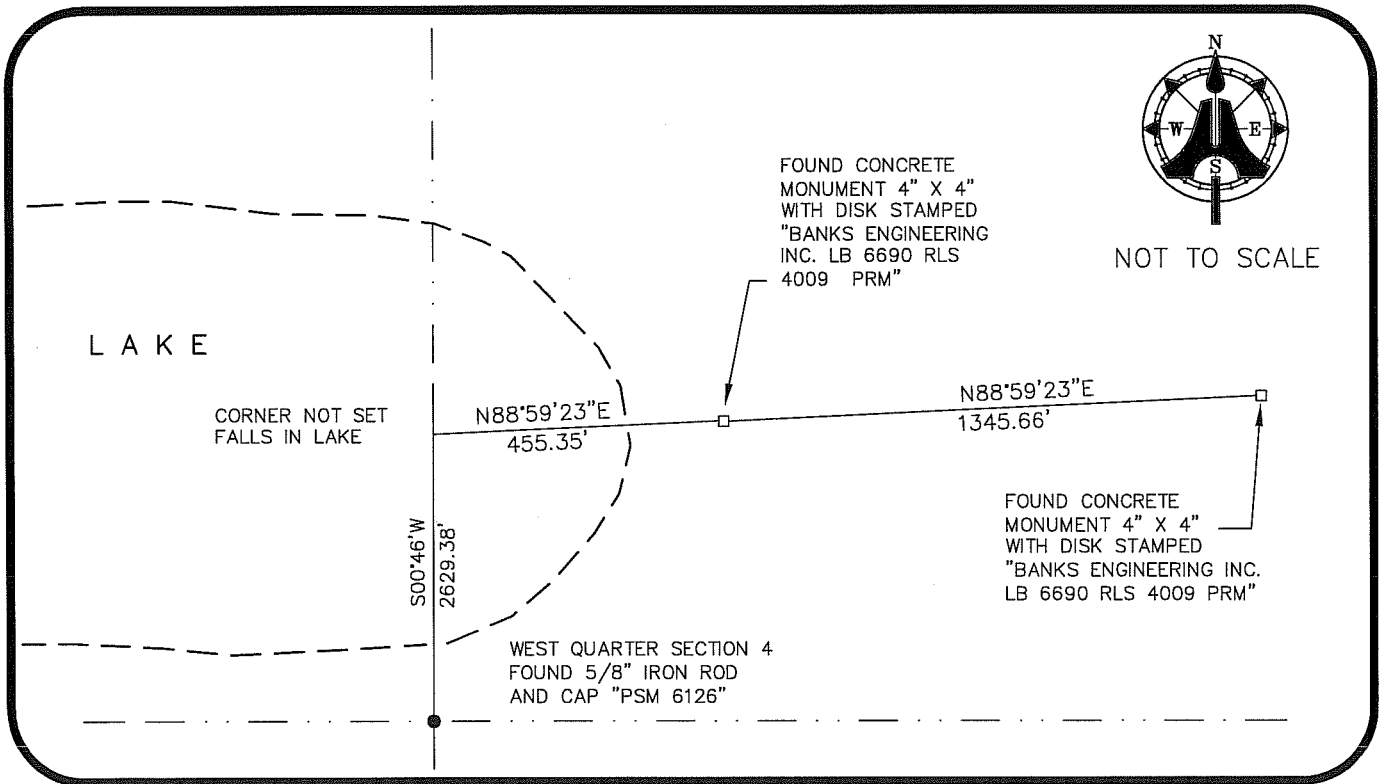
CORNER FALLS IN LAKE

FOUND CONCRETE MONUMENT 4" X 4"  
WITH DISK STAMPED "BANKS ENGINEERING  
INC. LB 6690 RLS 4009 PRM"

HORIZONTAL POSITION INFORMATION ( if determined ):

Latitude 26° 35' 52.3743" N      Longitude 81° 49' 23.6564" W  
 Y(NORTHING-Ft.) 823042.91      X(EASTING-Ft.) 713927.24      Zone FL W  
 Convergence 00° 04' 44.9"      Scale factor 0.99994500  
 Coordinate determination (circle one):      Field traverse GPS  
 Horizontal datum (circle one):      NAD27      NAD83(1986)      NAD83(1990)      other (explain)  
 Accuracy (circle one):      1st      2nd      3rd      other

NW corner of Section 4  
Twp 45S      Rge 25 E  
Tallahassee Base Meridian,  
LEE County(s), Florida



SURVEYORS CERTIFICATE:

I certify the monument and accessories indicated above were field located on MAY 23 ,2006

SIGNATURE \_\_\_\_\_ PSM NO. 5688  
 FIRM OR AGENCY AIM ENGINEERING & SURVEYING, INC. LB NO. LB 3114  
 ADDRESS 5300 LEE BOULEVARD  
 CITY LEHIGH ACRES, STATE FLORIDA ZIP 33971-1026  
 PHONE NUMBER (239) 332-4569 DATE 8/2/2007

SEND ORIGINAL TO:  
 Department of Environmental Protection  
 Bureau of Surveying and Mapping  
 3900 Commonwealth Boulevard  
 Mail Station 105  
 Tallahassee, Florida 32399

D.E.P. USE ONLY
Processed: _____
B.L.M. - I.D. _____
QUAD - I.D. _____

EMBOSSSED SEAL OVER SIGNATURE