

# FLORIDA DEPARTMENT OF ENVIRONMENTAL PROTECTION CERTIFIED CORNER RECORD

X-15

DOC. #

**083662**

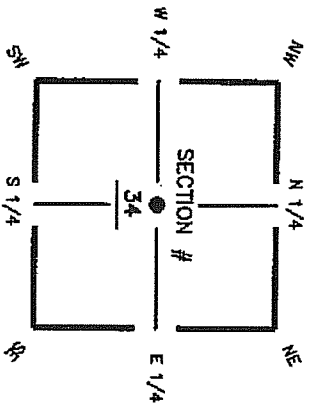
BLM# T45SR25E440140

CORNER DESCRIPTION:

Depict corner with

MONUMENTATION DESCRIPTION (EVIDENCE FOUND OR METHOD TO SET)

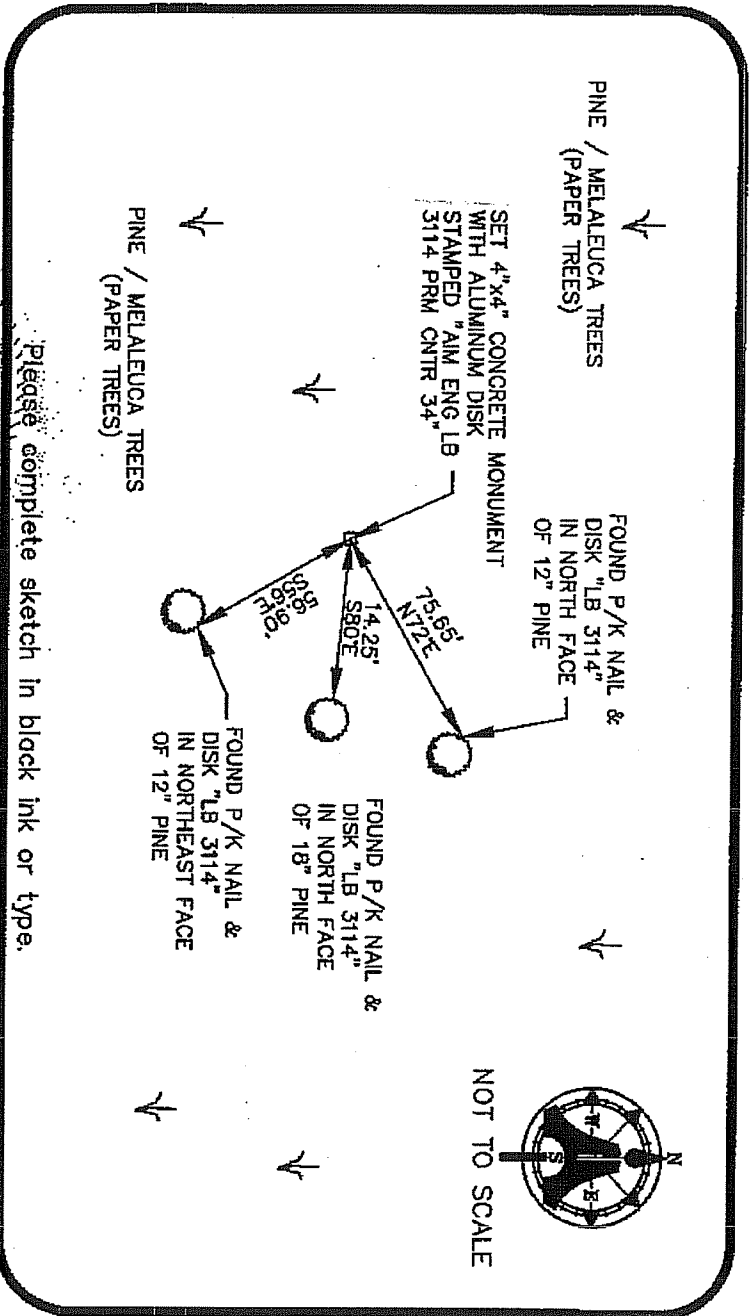
SET 4"x4" CONCRETE MONUMENT WITH ALUMINUM DISK  
STAMPED "AM ENG LB 3114 PRM CNTR 34"



GEN corner of Section 34  
Twp. 45 S, Rge 25 E  
Tallahassee Base Meridian,  
LEE County(s), Florida

HORIZONTAL POSITION INFORMATION ( if determined ):

Latitude 28° 31' 05.474" N Longitude 81° 47' 52.6430" W  
 Y(NORTHING-Ft.) 794087.57 X(EASTING-Ft.) 722234.17 Zone FL W  
 Convergence 00° 05' 24.8" Scale factor 0.99994618  
 Coordinate determination (circle one): GPS  
 Horizontal datum (circle one): NAD27 NAD83(1986) NAD83(1990) other (explain)  
 Accuracy (circle one): 1st 2nd 3rd other



Please complete sketch in black ink or type.

**SURVEYORS CERTIFICATE**

I certify the monument and distances indicated above were field located on 11/08/04

SIGNATURE: [Signature] PSN NO. 5888  
 AIM ENGINEERING & SURVEYING, INC. OF FLA. LB 3114  
 FIRM OR AGENCY

5300 LEE BOULEVARD, TALLAHASSEE, FLORIDA 32309

LEHIGH ACRES, FLORIDA 33971-1026  
 CITY STATE ZIP  
 PHONE NUMBER DATE

EMBOSSED SEAL OVER SIGNATURE

SEND ORIGINAL TO:  
 Department of Environmental Protection  
 Bureau of Surveying and Mapping  
 3900 Commonwealth Boulevard  
 Mail Station 105  
 Tallahassee, Florida 32399

Processed: 2-1-05 D.E.P. USE ONLY S.M.  
 B.L.M. - I.D. 440140  
 QUAD - I.D. 2115 Fort Myers SE