

FLORIDA DEPARTMENT OF ENVIRONMENTAL PROTECTION CERTIFIED CORNER RECORD

V-15

DOC. #

083659

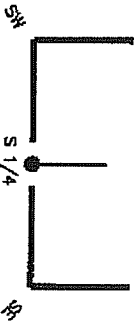
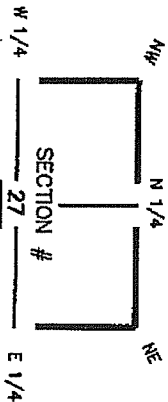
BLM# T45SR25E440200

CORNER DESCRIPTION:

MONUMENTATION DESCRIPTION (EVIDENCE FOUND OR METHOD TO SET)

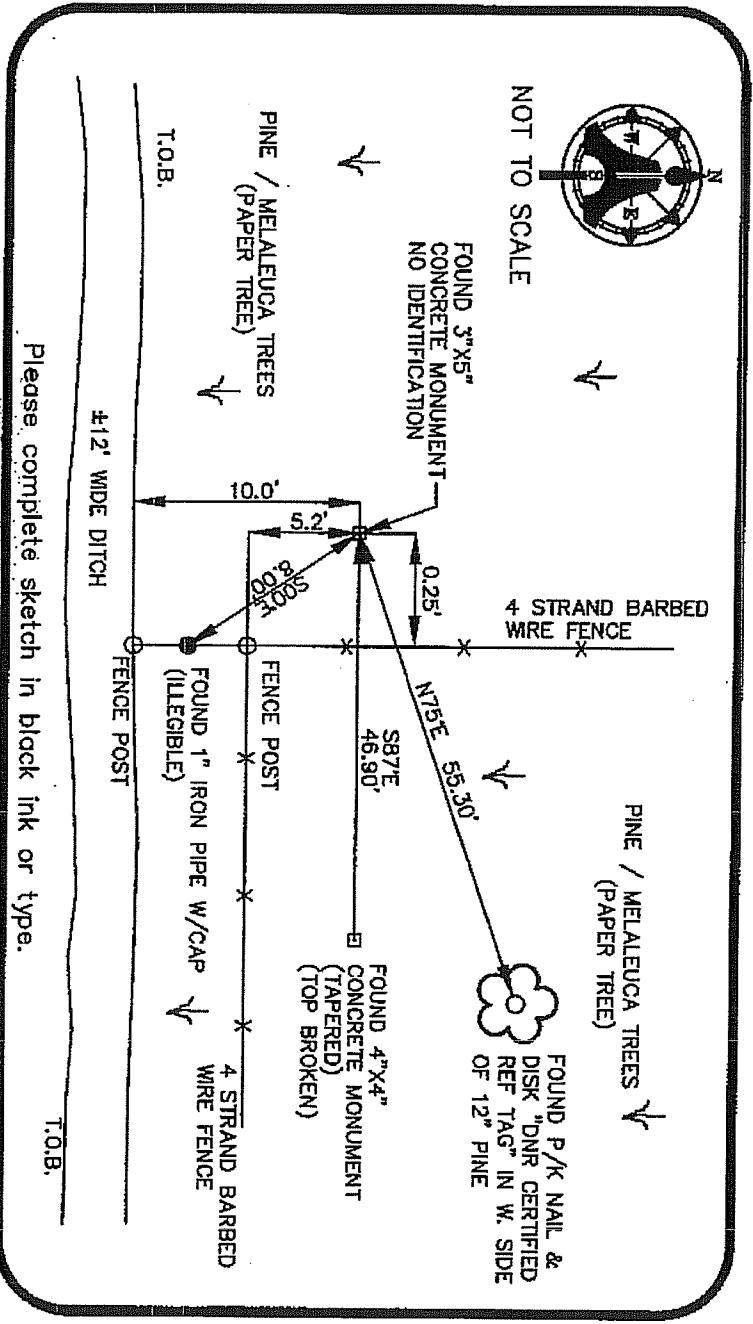
Depict corner with

**FOUND 3"x5" CONCRETE MONUMENT
NO IDENTIFICATION**



S 1/4 corner of Section 27
Twp. 45 S., Rge 25 E
Tallahassee Base Meridian,
LEE County(s), Florida

HORIZONTAL POSITION INFORMATION (if determined):
Latitude 28° 31' 31.8531" N Longitude 81° 47' 52.7871" W
Y(NORTHING-FL.) 796730.68 X(EASTING-FL.) 722218.74 Zone FL W
Convergence 00° 05' 24.8" Scale factor 0.999894618
Coordinate determination (circle one): GPS
Horizontal datum (circle one): NAD27 NAD83(1986) NAD83(1990) other (explain)
Accuracy (circle one): 1st 2nd 3rd other _____



SURVEYORS CERTIFICATE

I certify the monument and accessories indicated above were field located on 11/06/04

SIGNATURE:

AIM ENGINEERING & SURVEYING INC. 5888
183 N.W. 11th Ave.
Tallahassee, Florida 32309

5300 LEE BOULEVARD

LEHIGH ACRES, FLORIDA 32397-1026

(239) 332-4569

EMBOSSED SEAL OVER SIGNATURE

SEND ORIGINAL TO:
Department of Environmental Protection
Bureau of Surveying and Mapping
3800 Commonwealth Boulevard
Mail Station 105
Tallahassee, Florida 32309

Processed: 1-31-05 D.E.P. USE ONLY SM
BLM - I.D. 440200
QUAD - I.D. 2115 Fort Meyers SE