

FLORIDA DEPARTMENT OF ENVIRONMENTAL PROTECTION CERTIFIED CORNER RECORD

T-15

DOC. #

083660

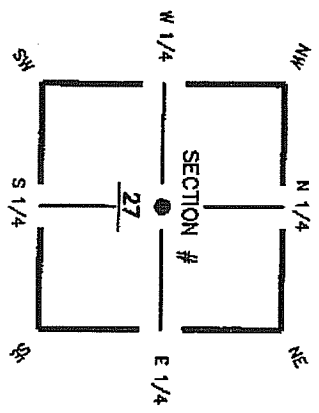
BLM# T45SR25E440240

CORNER DESCRIPTION:

Depict corner with

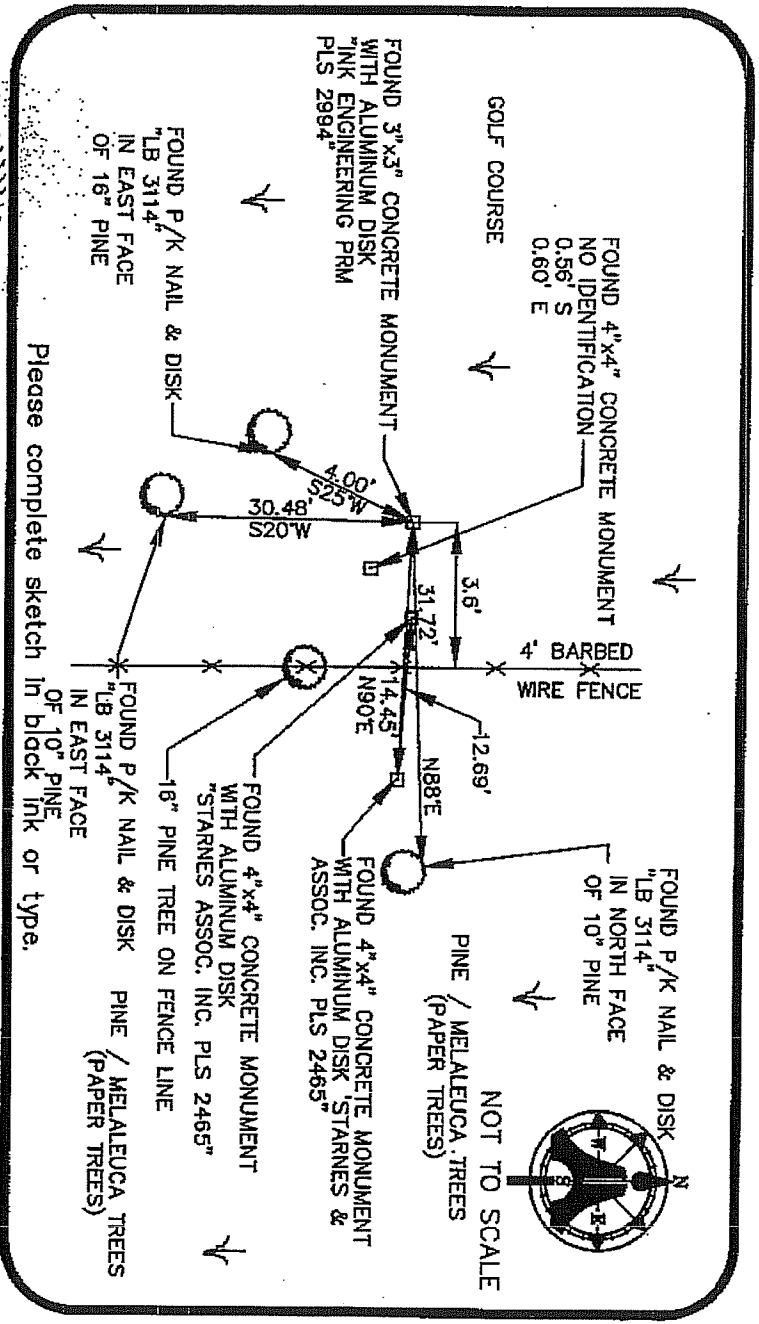
MONUMENTATION DESCRIPTION (EVIDENCE FOUND OR METHOD TO SET)

FOUND 3"x3" CONCRETE MONUMENT WITH ALUMINUM DISK
INK ENGINEERING PRM
PLS 2894



HORIZONTAL POSITION INFORMATION (if determined):

Latitude 26° 31' 57.8281" N Longitude 81° 47' 53.1856" W
 Y(NORTHING--Ft.) 798373.35 X(EASTING--Ft.) 722176.58 Zone FL W
 Convergence 00° 05' 24.7" Scale factor 0.99994817
 Coordinate determination (circle one): GPS
 Horizontal datum (circle one): NAD27 NAD83(1986) NAD83(1990) other (explain)
 Accuracy (circle one): 1st 2nd 3rd other



SURVEYOR'S CERTIFICATE:

I certify the monument and accessories indicated above were field located on 11/08/04



5688
FSA NO.
LB 3114

SEND ORIGINAL TO:
Department of Environmental Protection
Bureau of Surveying and Mapping
3900 Commonwealth Boulevard
Mail Station 105
Tallahassee, Florida 32398

AM-ENGINEERING & SURVEYING, INC.
5300 LEE BOULEVARD
LEHIGH ACRES, FLORIDA 33971-1028

(239) 332-4568
PHONE NUMBER
DATE
EMBOSSED SEAL OVER SIGNATURE

Processed: 1-31-05 USE ONLY
BLM: - I.D. 440240
QUAD - I.D. 2115 Fort Meyers SE
S.M.