

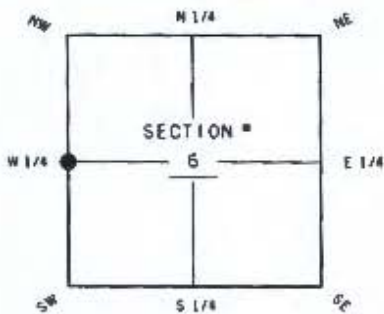
**FLORIDA DEPARTMENT OF ENVIRONMENTAL PROTECTION
CERTIFIED CORNER RECORD**

102131

DOC. # _____

CORNER DESCRIPTION:

Depict corner with _____ ●



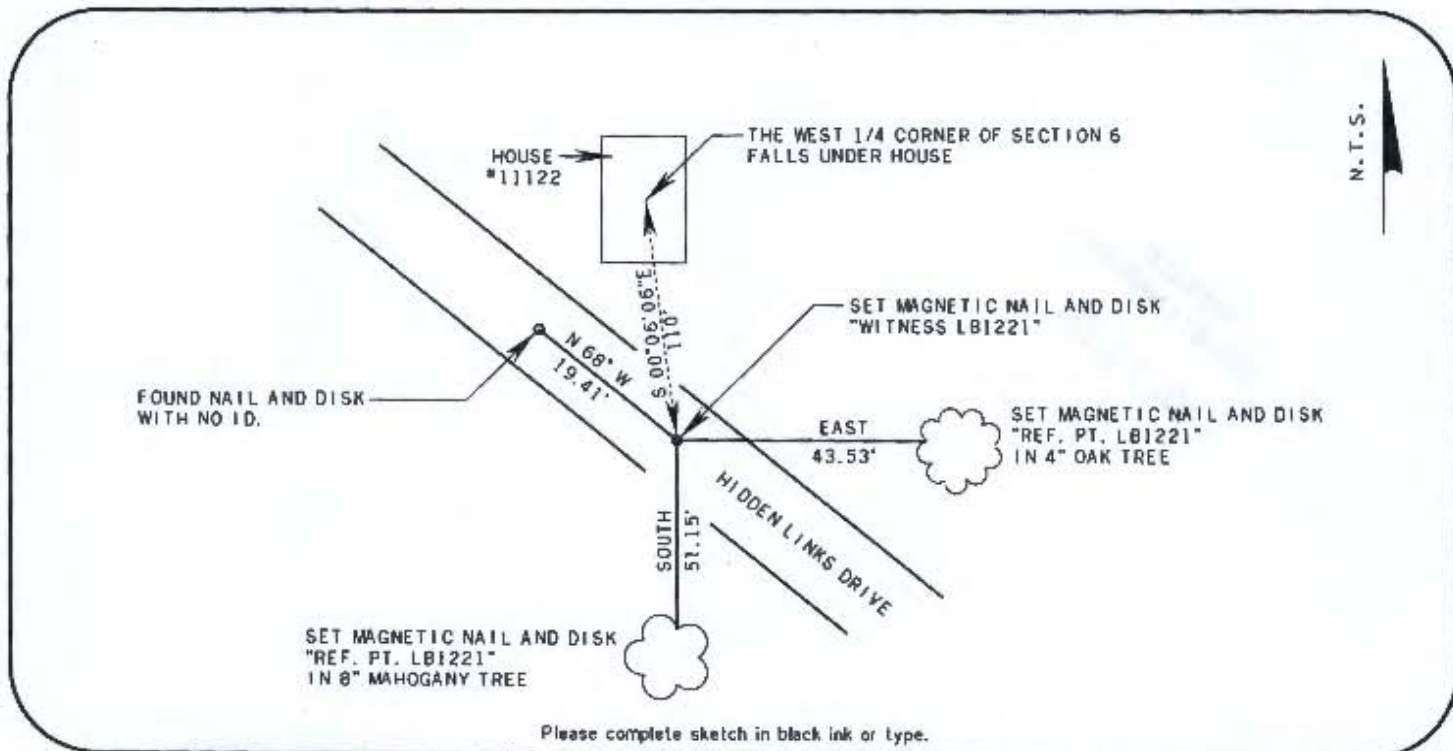
W 1/4 corner of Section 6
TWP 45 S RGE 26 E
Tallahassee Base Meridian,
LEE County(s), Florida

MONUMENTATION DESCRIPTION (EVIDENCE FOUND OR METHOD TO SET)

THE WEST 1/4 CORNER OF SECTION 6 FALLS UNDER A HOUSE. (HOUSE NUMBER 11999)
SET WITNESS CORNER ALONG THE SECTION LINE AT A BEARING OF S 00°06'06" E,
A DISTANCE OF 110' FROM THE TRUE CORNER
SET MAGNETIC NAIL AND DISK "WITNESS LB1221"

HORIZONTAL POSITION INFORMATION (if determined):

Latitude 26° 35' 28.83646" N Longitude 81° 45' 31.49015" W
Y(NORTHING-Ft.) 820700.743 X(EASTING-Ft.) 735005.395 Zone FL-WEST
Convergence 0° 06' 28.8" Scale factor 0.999948303
Coordinate determination (circle one): Field traverse GPS
Horizontal datum (circle one): NAD83(1999) other (explain) _____
Accuracy (circle one): 1st 2nd 3rd other _____



Please complete sketch in black ink or type.

SURVEYORS CERTIFICATE:

I certify the monument and accessories indicated above were field located on

OCTOBER 5, 2011

William J. Bowyer 4633
SIGNATURE PSM NO.
BOWYER-SINGLETON & ASSOC. INC. 1221
FIRM OR COMPANY LB NO.
520 SOUTH MAGNOLIA AVE.
Address
ORLANDO FLORIDA 32801
407-843-6123 NOVEMBER 11, 2011
PHONE NUMBER DATE

SEND ORIGINAL TO
Department of Environmental Protection
Bureau of Surveying and Mapping
3900 Commonwealth Boulevard
Mail Station 105
Tallahassee, Florida 32399

D.E.P. USE ONLY
Processed: 11-18-11 WLE
B.L.M. - I.D. 100640
QUAD - I.D. 2115 FORT MYERS SE

EMBOSSSED SEAL OVER SIGNATURE