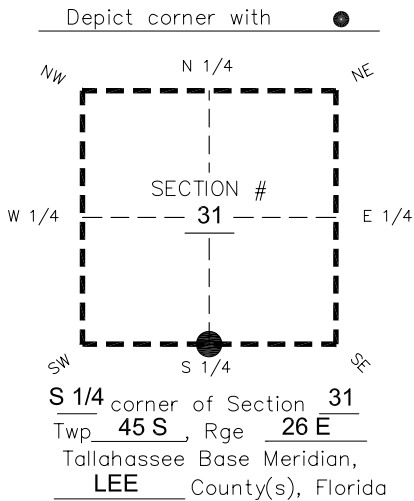


FLORIDA DEPARTMENT OF ENVIRONMENTAL PROTECTION

CERTIFIED CORNER RECORD

DOC. # _____
 BLM. # T45SR27E140100

CORNER DESCRIPTION: MONUMENTATION DESCRIPTION (EVIDENCE FOUND OR METHOD TO SET)



SET 4"x4" CONCRETE MONUMENT WITH 2" DISK "LB 1772" 0.2' BELOW GROUND. CORNER LOCATION DETERMINED FROM PREVIOUS SURVEYS BY OTHERS.

PRIOR CCR'S:

DOC. # 0014427

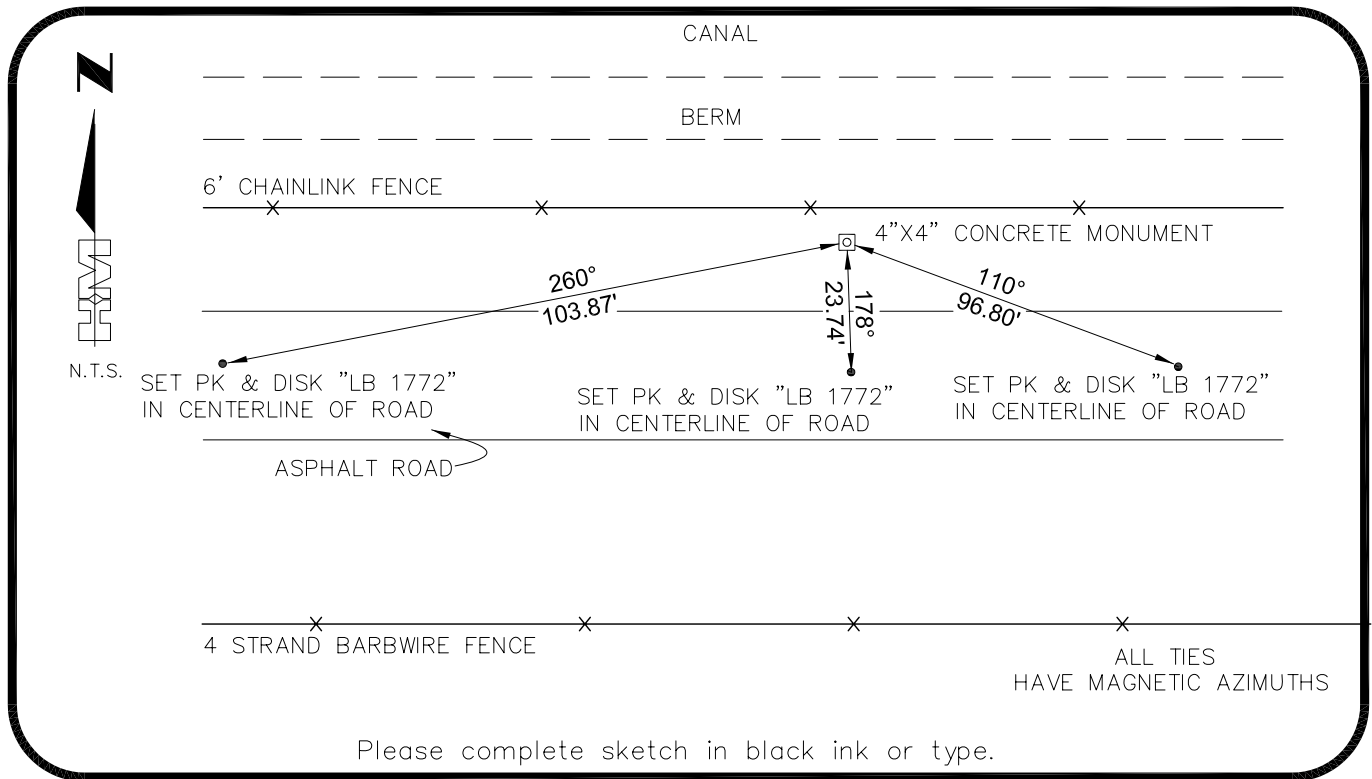
HORIZONTAL POSITION INFORMATION (if determined):

Latitude 26°30'40.8913" Longitude -81°44'59.4338"
 Y(NORTHING-Ft.) 791633.02 X(EASTING-Ft.) 737972.05 Zone West
 Convergence 0°06'42.0" Scale factor 0.99994885

Coordinate determination: GPS

Horizontal datum: NAD83(NSRS2007)

Accuracy (circle one): 1st 2nd 3rd other 1:35,000



SURVEYORS CERTIFICATE:

I certify the monument and accessories indicated above were field located on 03-23-2007

BEN R. HOMOLA

SEND ORIGINAL TO:
 Department of Environmental Protection
 Bureau of Surveying and Mapping
 3900 Commonwealth Boulevard
 Mail Station 105
 Tallahassee, Florida 32399

3950

SIGNATURE PSM NO.
HOLE MONTES 1772

FIRM OR AGENCY LB NO.
6224 WHISKEY CREEK DRIVE

ADDRESS CITY STATE ZIP
FORT MYERS FL 33919

PHONE NUMBER DATE ZIP
(239)985-1200 04/20/2007

D.E.P. USE ONLY	
Processed: _____	_____
B.L.M. - I.D. _____	_____
QUAD - I.D. _____	_____

EMBOSSSED SEAL OVER SIGNATURE