

FLORIDA DEPARTMENT OF ENVIRONMENTAL PROTECTION

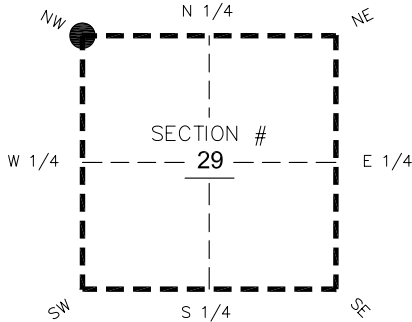
CERTIFIED CORNER RECORD

DOC. # _____
 BLM. # T45SR26E200300

CORNER DESCRIPTION: MONUMENTATION DESCRIPTION (EVIDENCE FOUND OR METHOD TO SET)

Depict corner with

FOUND BASE OF 4"x4" BROKEN CONCRETE MONUMENT 0.7' BELOW GRADE.



NW corner of Section 29
 Twp 45 S, Rge 26 E
 Tallahassee Base Meridian,
LEE County(s), Florida

PRIOR CCR'S:

DOC. # 0008783, 0041676

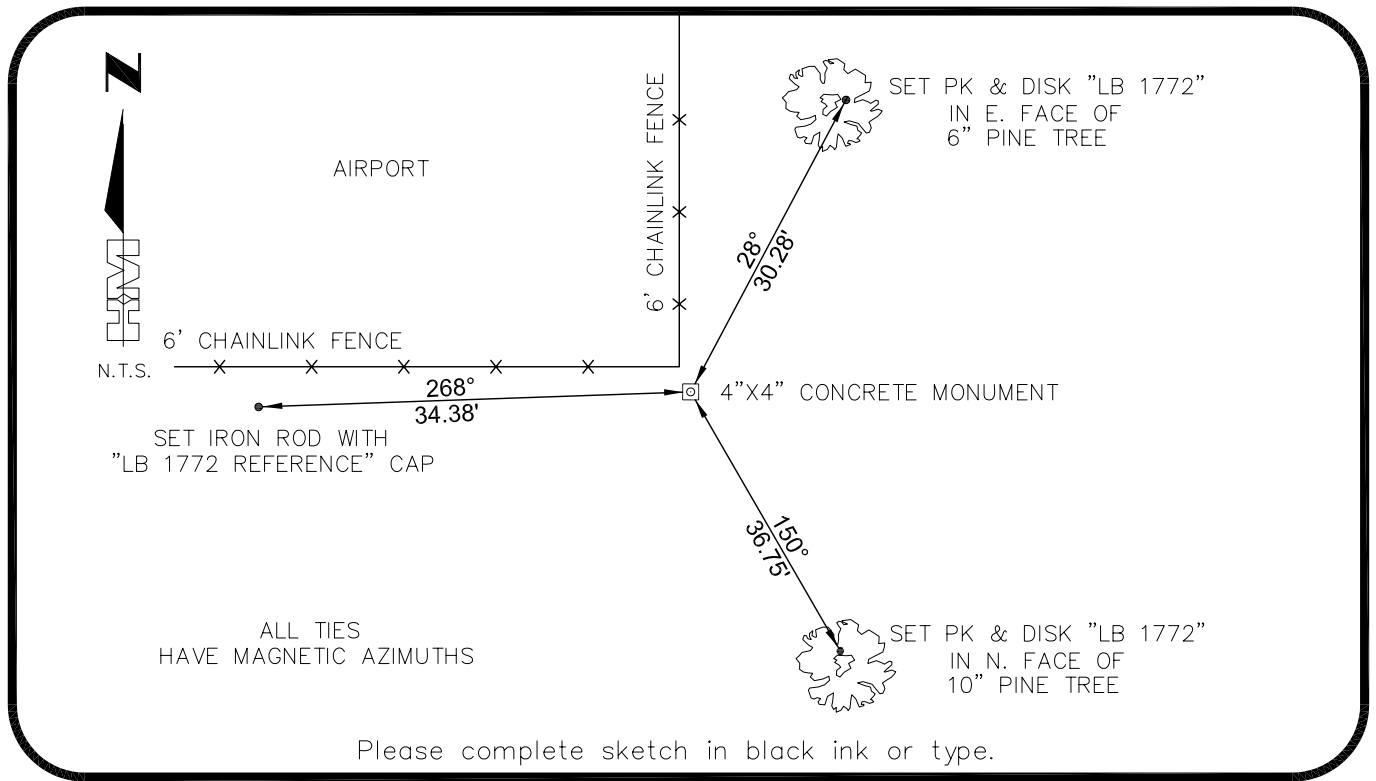
HORIZONTAL POSITION INFORMATION (if determined):

Latitude 26°32'23.8701" Longitude -81°44'30.7678"
 Y(NORTHING-Ft.) 802035.73 X(EASTING-Ft.) 740555.10 Zone West
 Convergence 0°06'55.2" Scale factor 0.99994934

Coordinate determination: **GPS**

Horizontal datum: **NAD83(NSRS2007)**

Accuracy (circle one): 1st 2nd 3rd other 1:35,000



SURVEYORS CERTIFICATE:

I certify the monument and accessories indicated above were field located on 02-22-2007
BEN R. HOMOLA

3950

SIGNATURE HOLE MONTES PSM NO. 1772
 FIRM OR AGENCY 6224 WHISKEY CREEK DRIVE LB NO. _____
 ADDRESS FORT MYERS STATE FL ZIP 33919
 CITY (239)985-1200 STATE 04/20/2007 ZIP _____
 PHONE NUMBER DATE

SEND ORIGINAL TO:
 Department of Environmental Protection
 Bureau of Surveying and Mapping
 3900 Commonwealth Boulevard
 Mail Station 105
 Tallahassee, Florida 32399

D.E.P. USE ONLY
Processed: _____
B.L.M. - I.D. _____
QUAD - I.D. _____

EMBOSSSED SEAL OVER SIGNATURE