

FLORIDA DEPARTMENT OF ENVIRONMENTAL PROTECTION

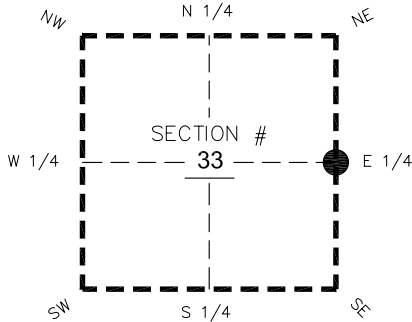
CERTIFIED CORNER RECORD

DOC. # _____
 BLM. # T45SR26E400140

CORNER DESCRIPTION: MONUMENTATION DESCRIPTION (EVIDENCE FOUND OR METHOD TO SET)

Depict corner with

FOUND 4"x4" CONCRETE MONUMENT WITH 2" DISK "LB 642 JOHNSON ENGINEERING." FLUSH WITH GROUND.



E 1/4 corner of Section 33
 Twp 45 S, Rge 26 E
 Tallahassee Base Meridian,
LEE County(s), Florida

PRIOR CCR'S:

DOC. # 0041689

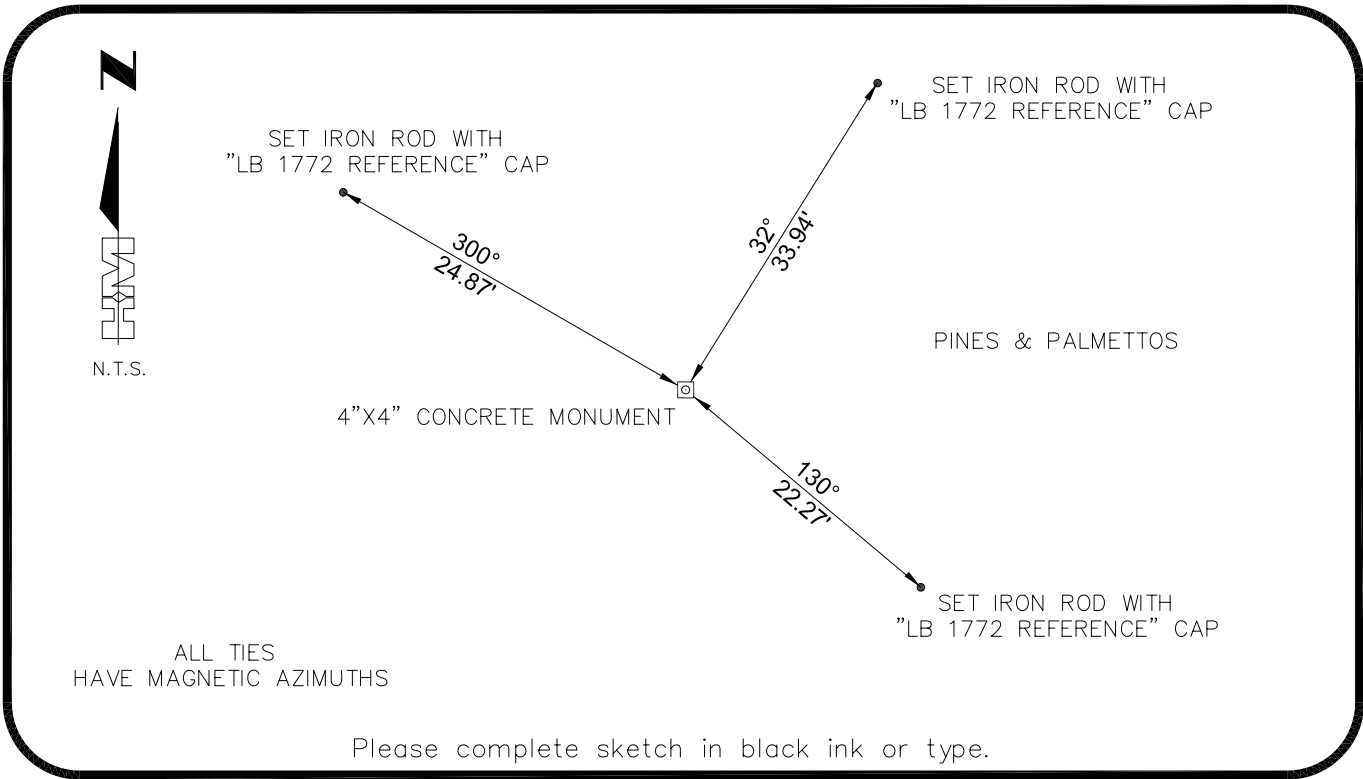
HORIZONTAL POSITION INFORMATION (if determined):

Latitude 26°31'08.0865" Longitude -81°42'33.8171"
 Y(NORTHING-Ft.) 794406.73 X(EASTING-Ft.) 751193.39 Zone West
 Convergence 0°07'47.1" Scale factor 0.99995153

Coordinate determination: **GPS**

Horizontal datum: **NAD83(NSRS2007)**

Accuracy (circle one): 1st 2nd 3rd other 1:35,000



Please complete sketch in black ink or type.

SURVEYORS CERTIFICATE:

I certify the monument and accessories indicated above were field located on 03-12-2007

BEN R. HOMOLA

 SIGNATURE **3950**
HOLE MONTES PSM NO. **1772**
 FIRM OR AGENCY LB NO.
6224 WHISKEY CREEK DRIVE
 ADDRESS **FL 33919**
FORT MYERS
 CITY STATE ZIP
(239)985-1200 **04/20/2007**
 PHONE NUMBER DATE

EMBOSSSED SEAL OVER SIGNATURE

SEND ORIGINAL TO:
 Department of Environmental Protection
 Bureau of Surveying and Mapping
 3900 Commonwealth Boulevard
 Mail Station 105
 Tallahassee, Florida 32399

D.E.P. USE ONLY
Processed: _____
B.L.M. - I.D. _____
QUAD - I.D. _____