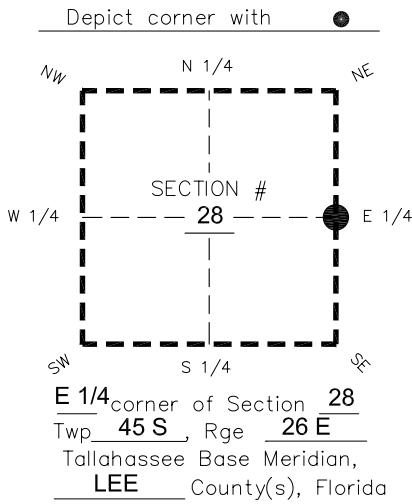


FLORIDA DEPARTMENT OF ENVIRONMENTAL PROTECTION

CERTIFIED CORNER RECORD

DOC. # _____
 BLM. # T45SR26E400240

CORNER DESCRIPTION: MONUMENTATION DESCRIPTION (EVIDENCE FOUND OR METHOD TO SET)



FOUND 4"x4" CONCRETE MONUMENT WITH 2" DISK "LB 642 JOHNSON ENGINEERING." FLUSH WITH GROUND.

PRIOR CCR'S:

DOC. # 0041688

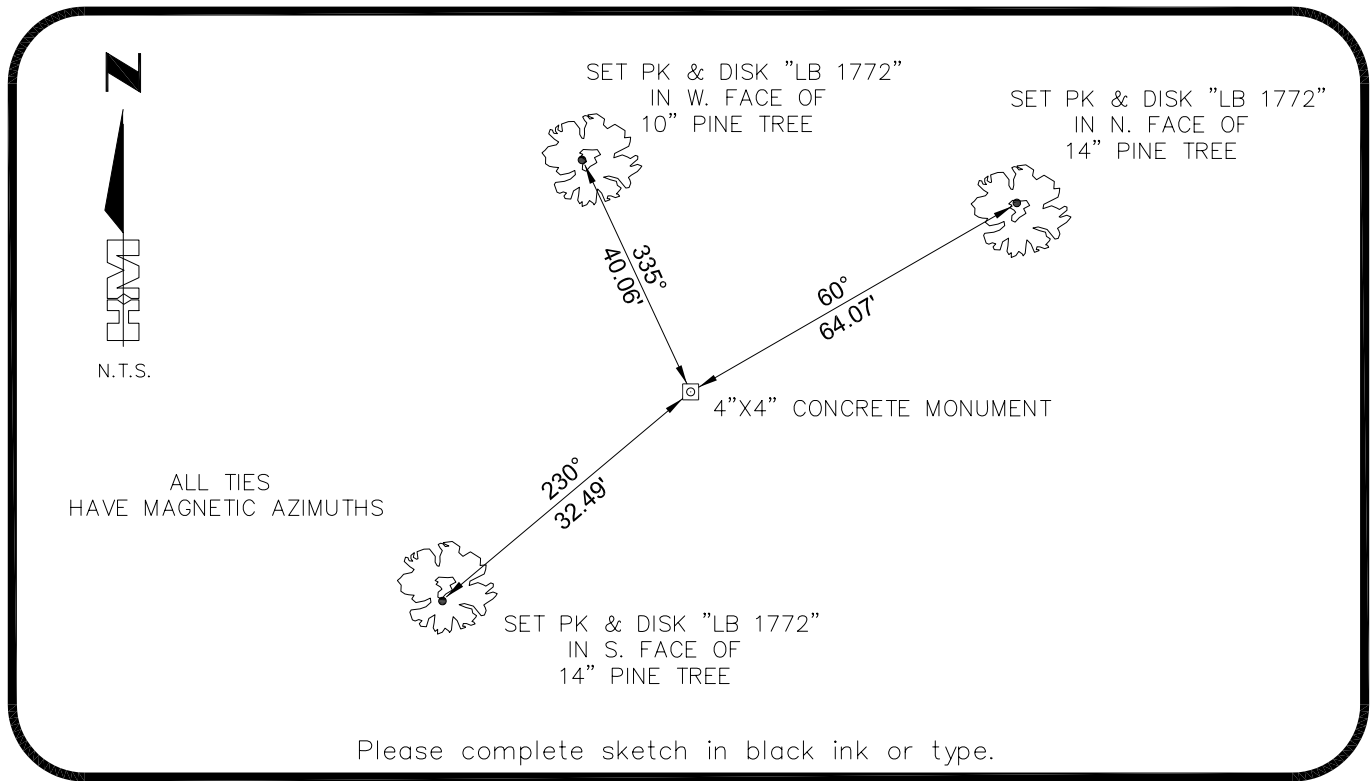
HORIZONTAL POSITION INFORMATION (if determined):

Latitude 26°31'59.8430" Longitude -81°42'33.8919"
 Y(NORTHING-Ft.) 799632.46 X(EASTING-Ft.) 751174.76 Zone West
 Convergence 0°07'47.3" Scale factor 0.99995153

Coordinate determination: **GPS**

Horizontal datum: **NAD83(NSRS2007)**

Accuracy (circle one): 1st 2nd 3rd other 1:35,000



Please complete sketch in black ink or type.

SURVEYORS CERTIFICATE:

I certify the monument and accessories indicated above were field located on 02-28-2007
BEN R. HOMOLA

3950

 SIGNATURE PSM NO.
HOLE MONTES 1772

 FIRM OR AGENCY LB NO.
6224 WHISKEY CREEK DRIVE

 ADDRESS FL 33919

 CITY STATE ZIP
(239)985-1200 04/20/2007

 PHONE NUMBER DATE

EMBOSSSED SEAL OVER SIGNATURE

SEND ORIGINAL TO:
 Department of Environmental Protection
 Bureau of Surveying and Mapping
 3900 Commonwealth Boulevard
 Mail Station 105
 Tallahassee, Florida 32399

D.E.P. USE ONLY
Processed: _____
B.L.M. - I.D. _____
QUAD - I.D. _____