

FLORIDA DEPARTMENT OF ENVIRONMENTAL PROTECTION

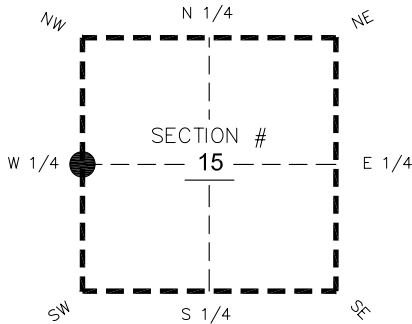
CERTIFIED CORNER RECORD

DOC. # _____
 BLM. # T45SR26E400440

CORNER DESCRIPTION: MONUMENTATION DESCRIPTION (EVIDENCE FOUND OR METHOD TO SET)

Depict corner with _____

FOUND 1/2" IRON ROD WITH CAP ILLEGIBLE FLUSH WITH GROUND.



W 1/4 corner of Section 15
 Twp 45 S, Rge 26 E
 Tallahassee Base Meridian,
LEE County(s), Florida

PRIOR CCR'S:

DOC. # N/A

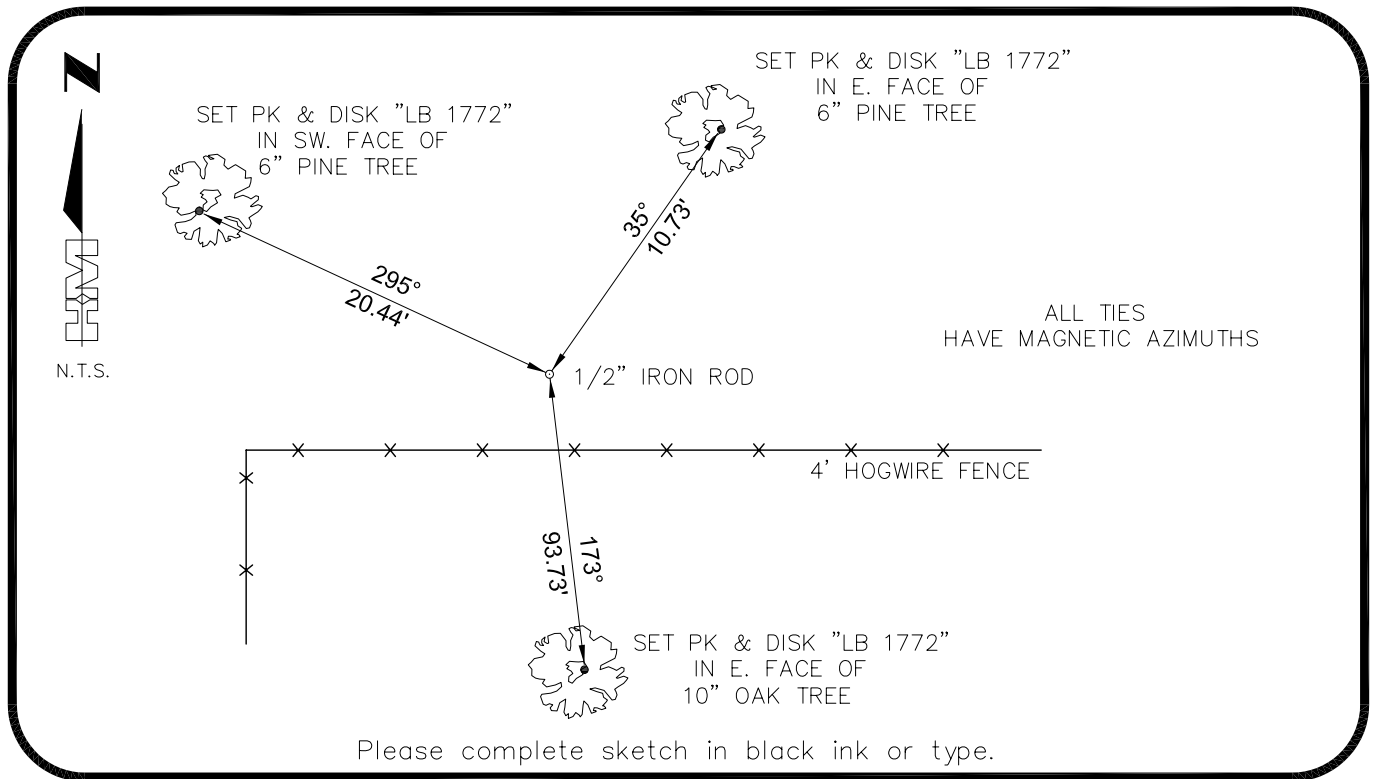
HORIZONTAL POSITION INFORMATION (if determined):

Latitude 26°33'44.7538" Longitude -81°42'35.7992"
 Y(NORTHING-Ft.) 810224.74 X(EASTING-Ft.) 750977.57 Zone West
 Convergence 0°07'46.9414" Scale factor 0.99995148

Coordinate determination: **GPS**

Horizontal datum: **NAD83(NSRS2007)**

Accuracy (circle one): 1st 2nd 3rd other 1:35,000



SURVEYORS CERTIFICATE:

I certify the monument and accessories indicated above were field located on 03-16-2007

BEN R. HOMOLA

SIGNATURE	3950
HOLE MONTES	PSM NO. 1772
FIRM OR AGENCY	LB NO.
6224 WHISKEY CREEK DRIVE	
FORT MYERS	FL 33919
(239)985-1200	STATE ZIP
PHONE NUMBER	DATE
04/20/2007	

EMBOSSSED SEAL OVER SIGNATURE

SEND ORIGINAL TO:
 Department of Environmental Protection
 Bureau of Surveying and Mapping
 3900 Commonwealth Boulevard
 Mail Station 105
 Tallahassee, Florida 32399

D.E.P. USE ONLY
Processed: _____
B.L.M. - I.D. _____
QUAD - I.D. _____