

FLORIDA DEPARTMENT OF ENVIRONMENTAL PROTECTION

CERTIFIED CORNER RECORD

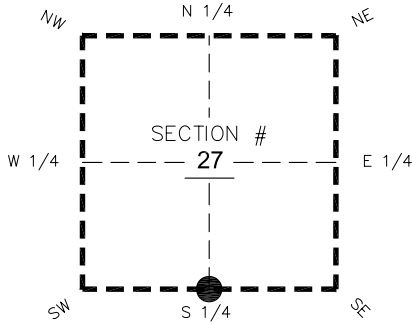
DOC. # _____

BLM. # T45SR26E440200

CORNER DESCRIPTION: MONUMENTATION DESCRIPTION (EVIDENCE FOUND OR METHOD TO SET)

Depict corner with

FOUND 4"x4" CONCRETE MONUMENT WITH 2" DISK "LB 642 JOHNSON ENGINEERING." 0.5' BELOW GROUND.



S 1/4 corner of Section 27
 Twp 45 S, Rge 26 E
 Tallahassee Base Meridian,
LEE County(s), Florida

PRIOR CCR'S:

DOC. # 0041693

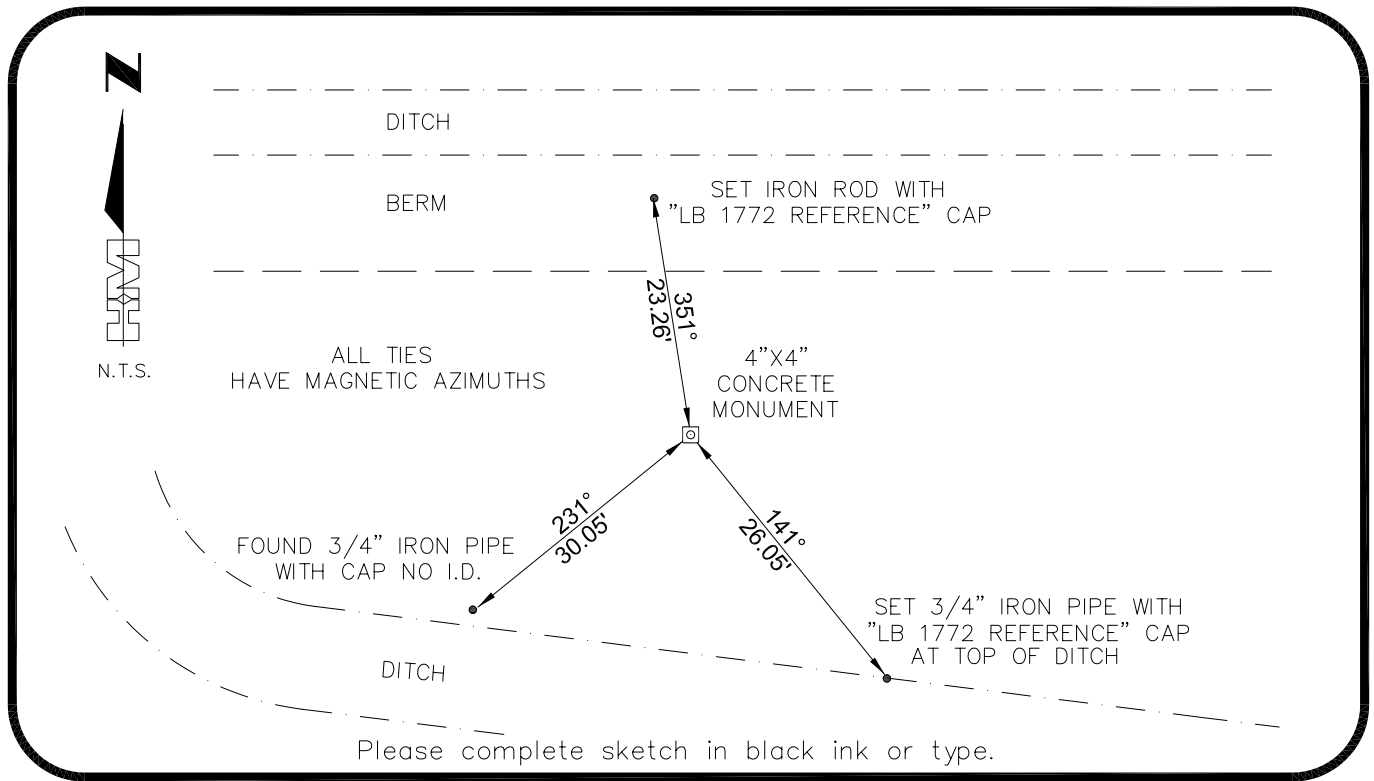
HORIZONTAL POSITION INFORMATION (if determined):

Latitude 26°31'33.6851" Longitude -81°42'04.3717"
 Y(NORTHING-Ft.) 796997.51 X(EASTING-Ft.) 753861.96 Zone West
 Convergence 0°08'00.4" Scale factor 0.99995212

Coordinate determination: **GPS**

Horizontal datum: **NAD83(NSRS2007)**

Accuracy (circle one): 1st 2nd 3rd other 1:35,000



SURVEYORS CERTIFICATE:

I certify the monument and accessories indicated above were field located on 02-15-2007

BEN R. HOMOLA

SEND ORIGINAL TO:
 Department of Environmental Protection
 Bureau of Surveying and Mapping
 3900 Commonwealth Boulevard
 Mail Station 105
 Tallahassee, Florida 32399

3950

SIGNATURE PSM NO.
HOLE MONTES 1772

FIRM OR AGENCY LB NO.
6224 WHISKEY CREEK DRIVE

ADDRESS CITY STATE ZIP
FORT MYERS FL 33919

PHONE NUMBER DATE
(239)985-1200 04/20/2007

| | |
|---------------------|--|
| D.E.P. USE ONLY | |
| Processed: _____ | |
| B.L.M. - I.D. _____ | |
| QUAD - I.D. _____ | |

EMBOSSSED SEAL OVER SIGNATURE