

# FLORIDA DEPARTMENT OF ENVIRONMENTAL PROTECTION CERTIFIED CORNER RECORD

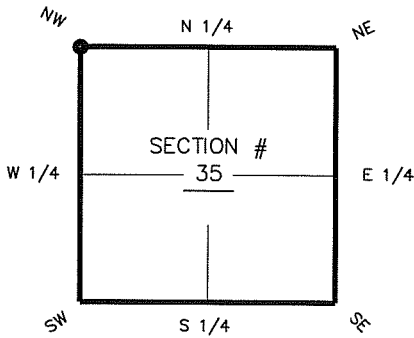
DOC. # \_\_\_\_\_

V-17

CORNER DESCRIPTION:      MONUMENTATION DESCRIPTION (EVIDENCE FOUND OR METHOD TO SET)

Depict corner with

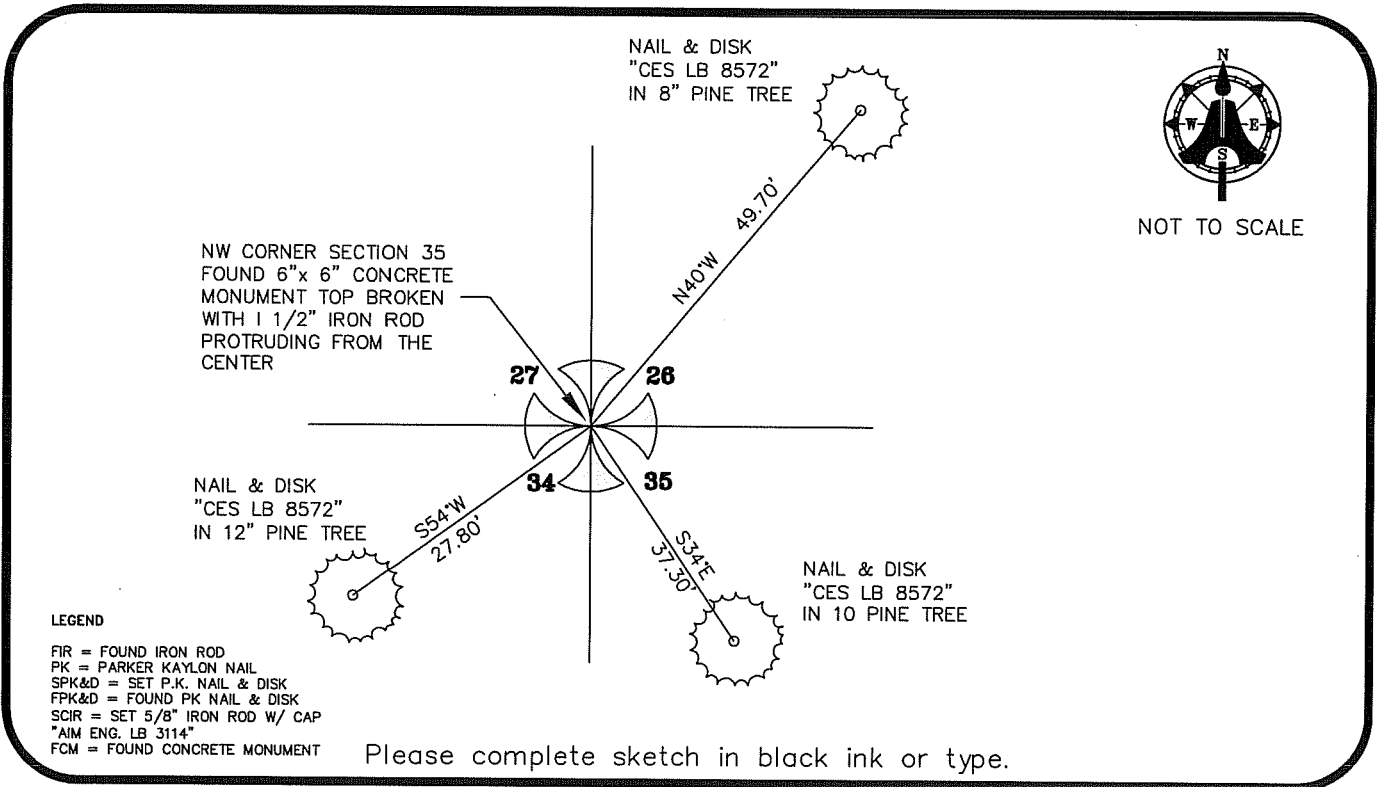
FOUND 6"x 6" CONCRETE MONUMENT TOP BROKEN  
WITH 1/2" IRON ROD PROTRUDING FROM THE CENTER



NW corner of Section 35  
Twp 45 S, Rge 27 E  
Tallahassee Base Meridian,  
LEE County(s), Florida

HORIZONTAL POSITION INFORMATION ( if determined ):

Latitude 26° 31' 39.1047" N      Longitude 81° 35' 46.5128" W  
Y(NORTHING-Ft.) 797638.69      X(EASTING-Ft.) 788180.05      Zone FL W  
Convergence 00° 10' 49.2"      Scale factor 0.99996161  
Coordinate determination (circle one):      Field traverse       GPS  
Horizontal datum (circle one):      NAD27      NAD83(1986)      NAD83(1986)       other (explain)  
Accuracy (circle one):      1st       2nd      3rd      other NAD83(1999)



NOT TO SCALE

**LEGEND**  
FIR = FOUND IRON ROD  
PK = PARKER KAYLON NAIL  
SPK&D = SET P.K. NAIL & DISK  
FPK&D = FOUND PK NAIL & DISK  
SCIR = SET 5/8" IRON ROD W/ CAP  
"AIM ENG. LB 3114"  
FCM = FOUND CONCRETE MONUMENT

Please complete sketch in black ink or type.

SURVEYORS CERTIFICATE:

I certify the monument and accessories indicated above were field located on FEB 19, 2007

\_\_\_\_\_  
SIGNATURE      5688      PSM NO.  
**AIM ENGINEERING & SURVEYING, INC.**      LB 3114  
FIRM OR AGENCY      LB NO.  
5300 LEE BOULEVARD  
ADDRESS  
LEHIGH ACRES, FLORIDA 33971-1026  
CITY      STATE      ZIP  
(239) 332-4569      7/12/07  
PHONE NUMBER      DATE

SEND ORIGINAL TO:  
Department of Environmental Protection  
Bureau of Surveying and Mapping  
3900 Commonwealth Boulevard  
Mail Station 105  
Tallahassee, Florida 32399

D.E.P. USE ONLY	
Processed:	_____
B.L.M. - I.D.	_____
QUAD - I.D.	_____

EMBOSSSED SEAL OVER SIGNATURE