

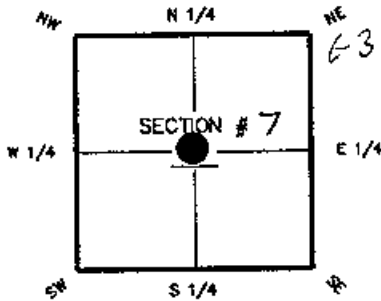
**FLORIDA DEPARTMENT OF ENVIRONMENTAL PROTECTION
CERTIFIED CORNER RECORD**

075329

DOC. # _____

CORNER DESCRIPTION: MONUMENTATION DESCRIPTION (EVIDENCE FOUND OR METHOD TO SET)

Depict corner with 

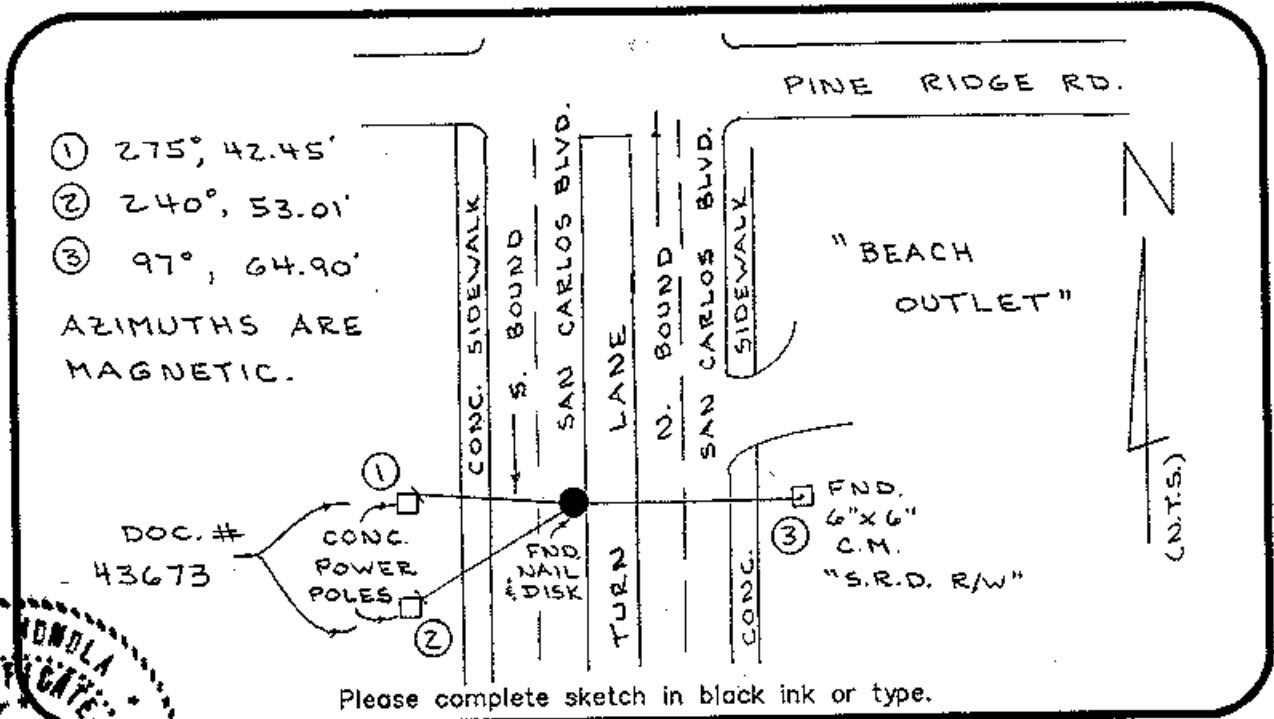


FOUND NAIL & 2" ALUMINUM DISK
"DUANE HALL ENGINEERING, L.B. 734"

HORIZONTAL POSITION INFORMATION (if determined):

Latitude 26°29'13.33607" Longitude 81°56'35.25903"
 Y(NORTHING-Ft.) 782717.243 X(EASTING-Ft.) 674768.752 Zone WEST
 Convergence 0°01'31.3" Scale factor 0.99994157
 Coordinate determination (circle one): Field traverse (GPS)
 Horizontal datum (circle one): NAD27 NAD83(1985) (NAD83(1990)) other (explain)
 Accuracy (circle one): 1st 2nd 3rd other 1:50,000

CENTER corner of Section 7
 Twp. 46 S. Rge 24 E.
 Tallahassee Base Meridian,
LEE County(s), Florida



① 275°, 42.45'
 ② 240°, 53.01'
 ③ 97°, 64.90'
 AZIMUTHS ARE
 MAGNETIC.

DOC. #
43673

Please complete sketch in black ink or type.



NO. 3950 SURVEYORS CERTIFICATE:

the monument and accessories indicated above were field located on MARCH 2002

Ben N. Anzola 3950
 PSM NO.
DEPT. ASSOCIATES, INC. 3642
 LB NO.
 FIRM OR AGENCY
6241 ARC WAY
 ADDRESS
FORT MYERS FL 33912
 CITY STATE ZIP
(239) 275-8875 5-8-02
 PHONE NUMBER DATE

EMBOSSSED SEAL OVER SIGNATURE

SEND ORIGINAL TO:
 Department of Environmental Protection
 Bureau of Surveying and Mapping
 3900 Commonwealth Boulevard
 Tallahassee, Florida 32399

D.E.P. USE ONLY
 Processed: 5-17-02 CS
 B.L.M. - I.D. 140540
 QUAD - I.D. 369 Fort Myers Beach