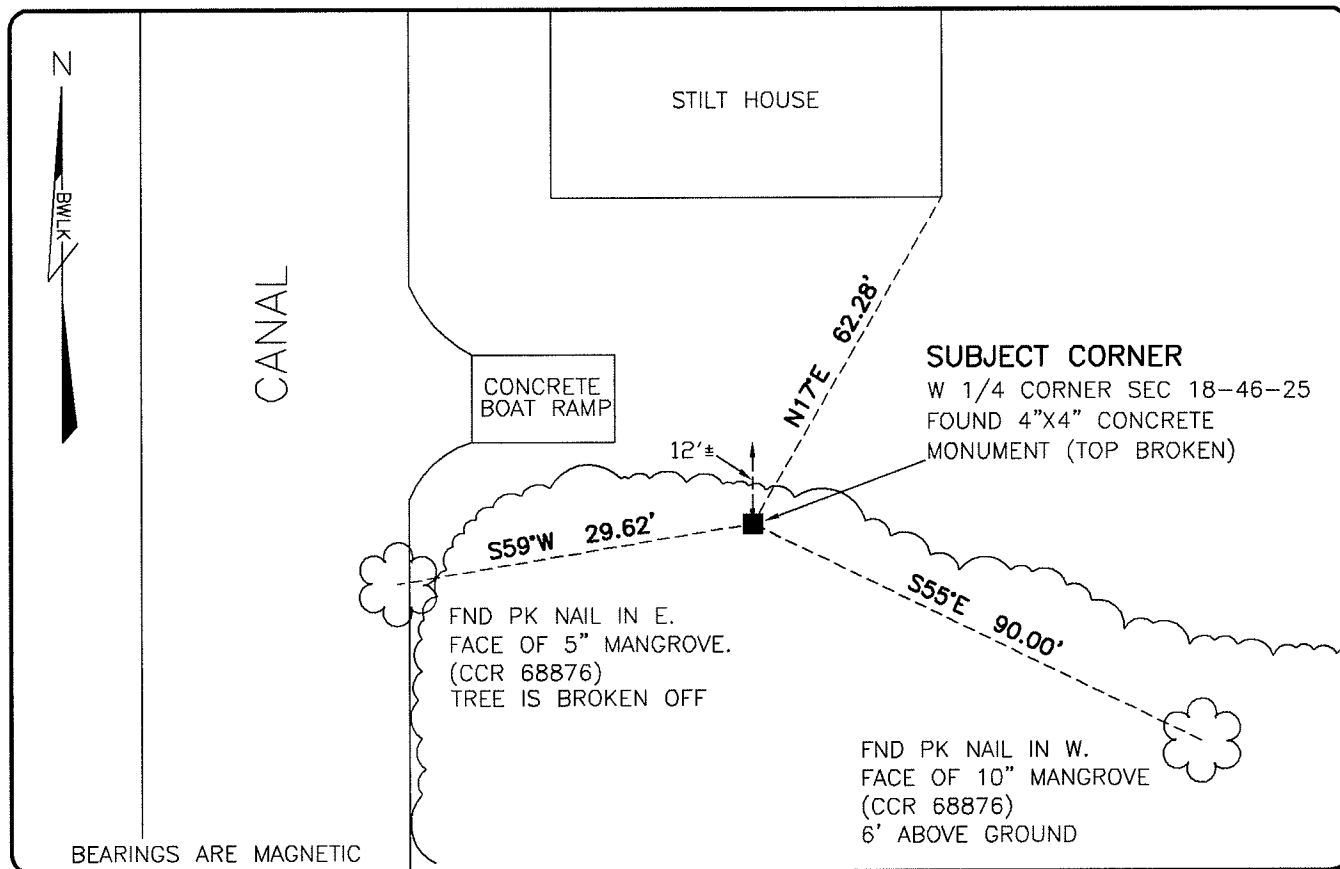


**LAND CORNER RECORD**

**PUBLIC WORKS  
LEE COUNTY, FLORIDA**

Address - 1500 Monroe St., Ft. Myers, Fla. 33901

Phone : (239) 479-8900



**SUBJECT CORNER**  
W 1/4 CORNER SEC 18-46-25  
FOUND 4"X4" CONCRETE  
MONUMENT (TOP BROKEN)

FND PK NAIL IN E.  
FACE OF 5" MANGROVE.  
(CCR 68876)  
TREE IS BROKEN OFF

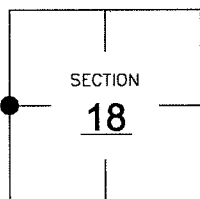
FND PK NAIL IN W.  
FACE OF 10" MANGROVE  
(CCR 68876)  
6' ABOVE GROUND

**COMMENTS:**

FOUND SUBJECT CORNER AND REFERENCES IN HARMONY WITH CCR 68876.

**CORNER DESCRIPTION**

W 1/4 Corner  
Section 18  
Township 46  
Range 25



**HORIZONTAL POSITION INFORMATION**

Florida West Zone, NAD 1983(1990 Adjustment)  
Northing(ft) 777897.78 Easting(ft) 703885.71  
Latitude 26°28'25.3754" Longitude 81°51'14.8485"  
Scale Factor 0.99994

**EXISTING CERTIFIED CORNER RECORDS**

Document No.	Date
<u>68876</u>	<u>3-8-00</u>

The above documents are based on FDEP Bureau of Surveying and Mapping Record Information.

I hereby certify the monument and accessories shown above were field located on 8-28-07.

*Scott C. Whitaker*  
**SCOTT C. WHITAKER**  
Professional Surveyor and Mapper  
Florida Certificate No. 4324  
Date Signed 8-22-07

BEAN, WHITAKER, LUTZ & KAREH, INC. (LB 4919)  
13041 McGregor Boulevard  
Fort Myers, Florida 33919-5910  
Phone: (239) 481-1331

**POINT NO. 12162**

**BLM REFERENCE NO. T46SR25E100440**