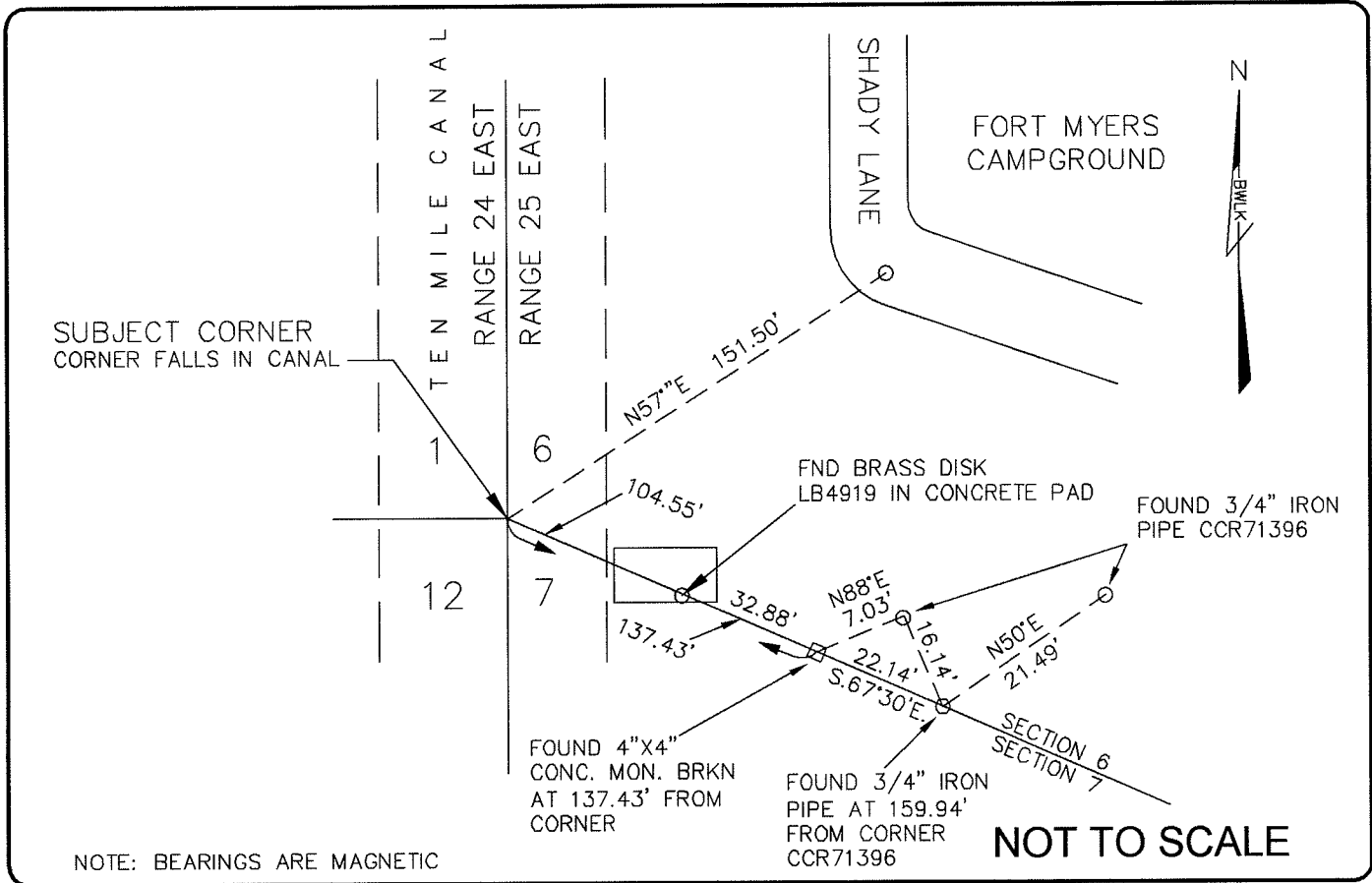


**LAND CORNER RECORD**

**PUBLIC WORKS  
LEE COUNTY, FLORIDA**

Address - 1500 Monroe St., Ft. Myers, Fla. 33901

Phone : (239) 479-8900

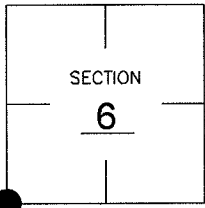


**COMMENTS:**

Corner falls in Ten Mile Canal. Recovered three references as described on CCR#71336. Set additional references.

**CORNER DESCRIPTION**

SW Corner  
Section 6  
Township 46  
Range 25



**HORIZONTAL POSITION INFORMATION**

Florida West Zone, NAD 1983(1990 Adjustment)  
 Northing(ft) 785840.53 Easting(ft) 703780.69  
 Latitude 26°29'44.04333" N Longitude 81°51'15.90525" W  
 Scale Factor 0.99995

**EXISTING CERTIFIED CORNER RECORDS**

| Document No. | Date           |
|--------------|----------------|
| <u>71396</u> | <u>5-01-01</u> |
|              |                |
|              |                |
|              |                |
|              |                |

The above documents are based on FDEP Bureau of Surveying and Mapping Record Information.

I hereby certify the monument and accessories shown above were field located on 7-12-05.

*Scott C. Whitaker*  
 SCOTT C. WHITAKER  
 Registered Land Surveyor  
 Florida Certificate No. 4324  
 Date Signed 8-22-07

BEAN, WHITAKER, LUTZ & KAREH, INC. (LB 4919)  
 13041 McGregor Boulevard  
 Fort Myers, Florida 33919-5910  
 Phone: (239) 481-1331

CO-ORDINATE NO. 12152

BLM REFERENCE NO. T46SR25E100600