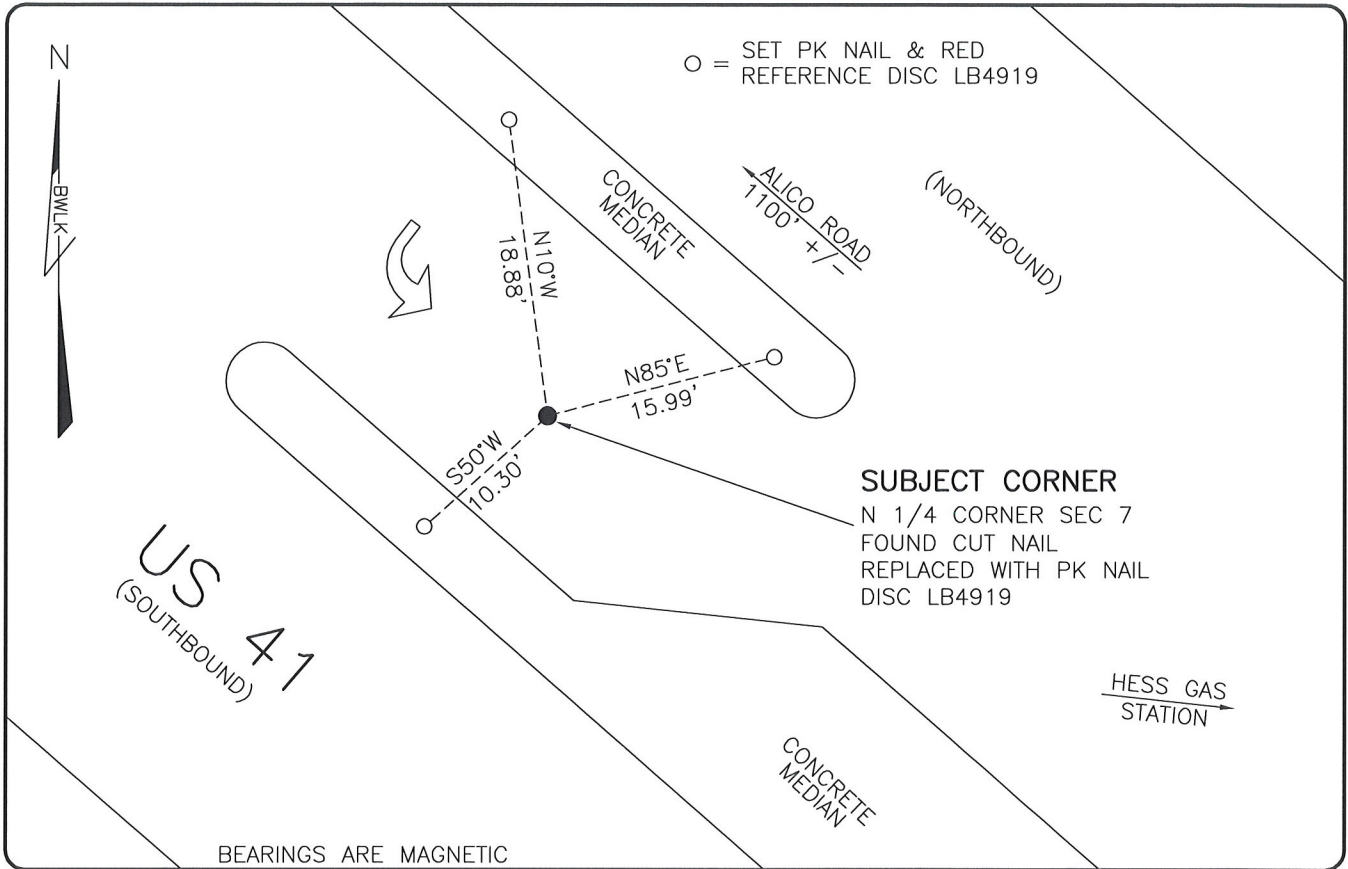


LAND CORNER RECORD

**PUBLIC WORKS
LEE COUNTY, FLORIDA**

Address - 1500 Monroe St., Ft. Myers, Fla. 33901

Phone : (239) 479-8900



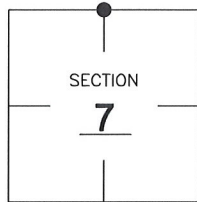
SUBJECT CORNER
N 1/4 CORNER SEC 7
FOUND CUT NAIL
REPLACED WITH PK NAIL
DISC LB4919

COMMENTS:

FOUND CUT NAIL AT CALCULATED CORNER BASED ON HISTORICAL DIMENSIONS OF SECTION 7. RESET WITH PK NAIL AND DISC STAMPED LB4919.

CORNER DESCRIPTION

N 1/4 Corner
Section 7
Township 46
Range 25



HORIZONTAL POSITION INFORMATION

Florida West Zone, NAD 1983(1990 Adjustment)

Northing(ft) 784721.41 Easting(ft) 706488.06

Latitude 26°29'32.9281" Longitude 81°50'46.1197"

Scale Factor 0.99994

EXISTING CERTIFIED CORNER RECORDS

Document No.	Date
<u>59916</u>	<u>2-7-97</u>
<u>37098</u>	<u>9-27-90</u>
<u>36821</u>	

The above documents are based on FDEP Bureau of Surveying and Mapping Record Information.

I hereby certify the monument and accessories shown above were field located on 6-17-08.

Scott C. Whitaker

SCOTT C. WHITAKER
Professional Surveyor and Mapper
Florida Certificate No. 4324
Date Signed 7/14/08

BEAN, WHITAKER, LUTZ & KAREH, INC. (LB 4919)
13041 McGregor Boulevard
Fort Myers, Florida 33919-5910
Phone: (239) 481-1331

POINT NO. 12206

BLM REFERENCE NO. T46SR25E140600