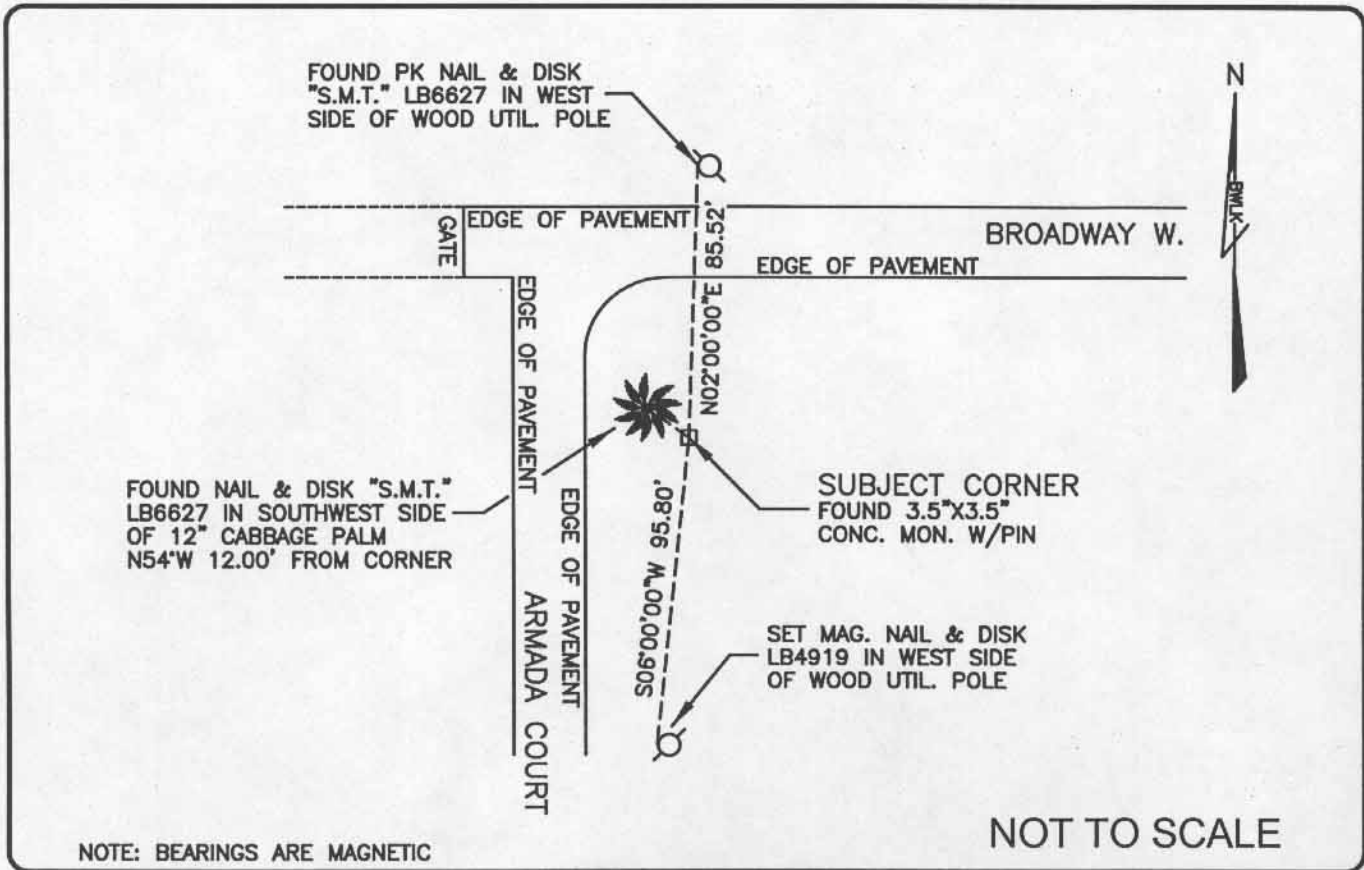


LAND CORNER RECORD

PUBLIC WORKS  
LEE COUNTY, FLORIDA

Address - 1500 Monroe St., Ft. Myers, Fla. 33901

Phone : (239) 479-8900



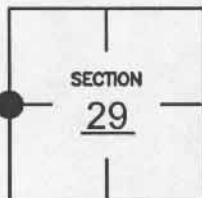
NOTE: BEARINGS ARE MAGNETIC

COMMENTS:

Recovered corner and two references as described on CCR#66201.

CORNER DESCRIPTION

W 1/4 Corner  
Section 29  
Township 46  
Range 25



HORIZONTAL POSITION INFORMATION

Florida West Zone, NAD 1983(1990 Adjustment)

Northing(ft) 766234.189 Easting(ft) 709411.472

Latitude 26°26'29.79" N Longitude 81°50'14.20" W

Scale Factor 0.999944427

EXISTING CERTIFIED CORNER RECORDS

| Document No. | Date     |
|--------------|----------|
| 66201        | 12-07-99 |
|              |          |
|              |          |
|              |          |
|              |          |

The above documents are based on FDEP Bureau of Surveying and Mapping Record Information.

I hereby certify the monument and accessories shown above were field located on 1-25-05.

*James R. Coleman*

JAMES R. COLEMAN  
Registered Land Surveyor  
Florida Certificate No. 3205  
Date Signed 2-23-05

BEAN, WHITAKER, LUTZ & KAREH, INC. (LB 4919)  
13041 McGregor Boulevard  
Fort Myers, Florida 33919-5910  
Phone: (239) 481-1331

CO-ORDINATE NO. 12103

BLM REFERENCE NO. T46SR25E200240