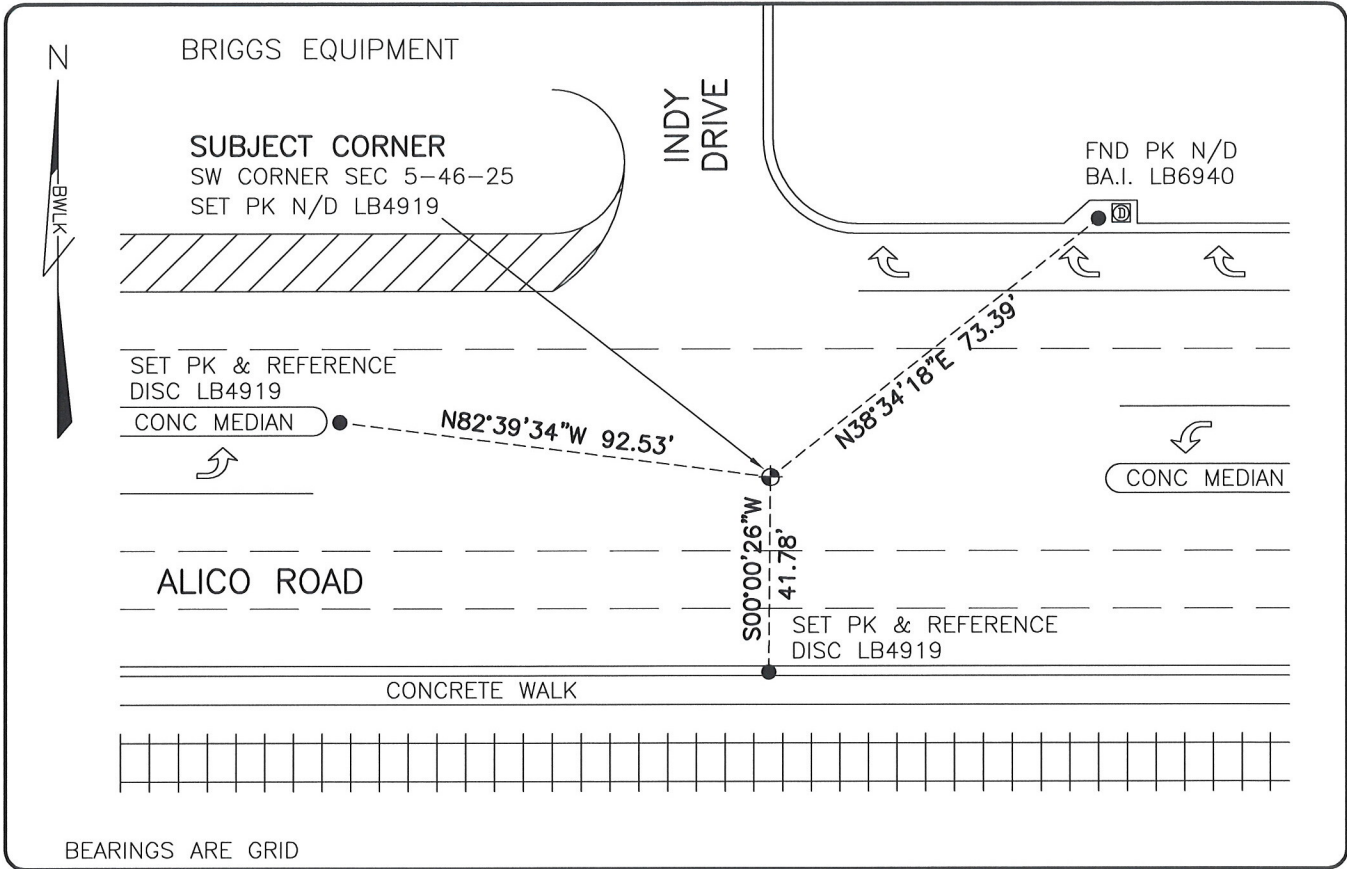


LAND CORNER RECORD

**PUBLIC WORKS
LEE COUNTY, FLORIDA**

Address - 1500 Monroe St., Ft. Myers, Fla. 33901

Phone : (239) 479-8900



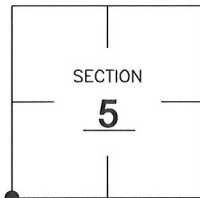
BEARINGS ARE GRID

COMMENTS:

SET SUBJECT CORNER BASED ON HISTORICAL RECORDS OF PREVIOUS LOCATION PRIOR TO CONSTRUCTION OF ALICO ROAD.

CORNER DESCRIPTION

SW Corner
Section 5
Township 46
Range 25



HORIZONTAL POSITION INFORMATION

Florida West Zone, NAD 1983(1990 Adjustment)

Northing(ft) 784754.57 Easting(ft) 709136.36

Latitude 26°29'33.2243" Longitude 81°50'16.9698"

Scale Factor 0.99994

EXISTING CERTIFIED CORNER RECORDS

Document No.	Date
<u>59917</u>	<u>2/6/97</u>
<u>37099</u>	<u>9/27/90</u>
<u>36822</u>	<u>8/27/90</u>
<u>22586</u>	<u>1/2/86</u>
<u>9581</u>	

The above documents are based on FDEP Bureau of Surveying and Mapping Record Information.

I hereby certify the monument and accessories shown above were field located on 3/29/08.

Scott C. Whitaker
SCOTT C. WHITAKER
Professional Surveyor and Mapper
Florida Certificate No. 4324
Date Signed 5/30/08

BEAN, WHITAKER, LUTZ & KAREH, INC. (LB 4919)
13041 McGregor Boulevard
Fort Myers, Florida 33919-5910
Phone: (239) 481-1331

POINT NO. 12196

BLM REFERENCE NO. T46SR25E200600