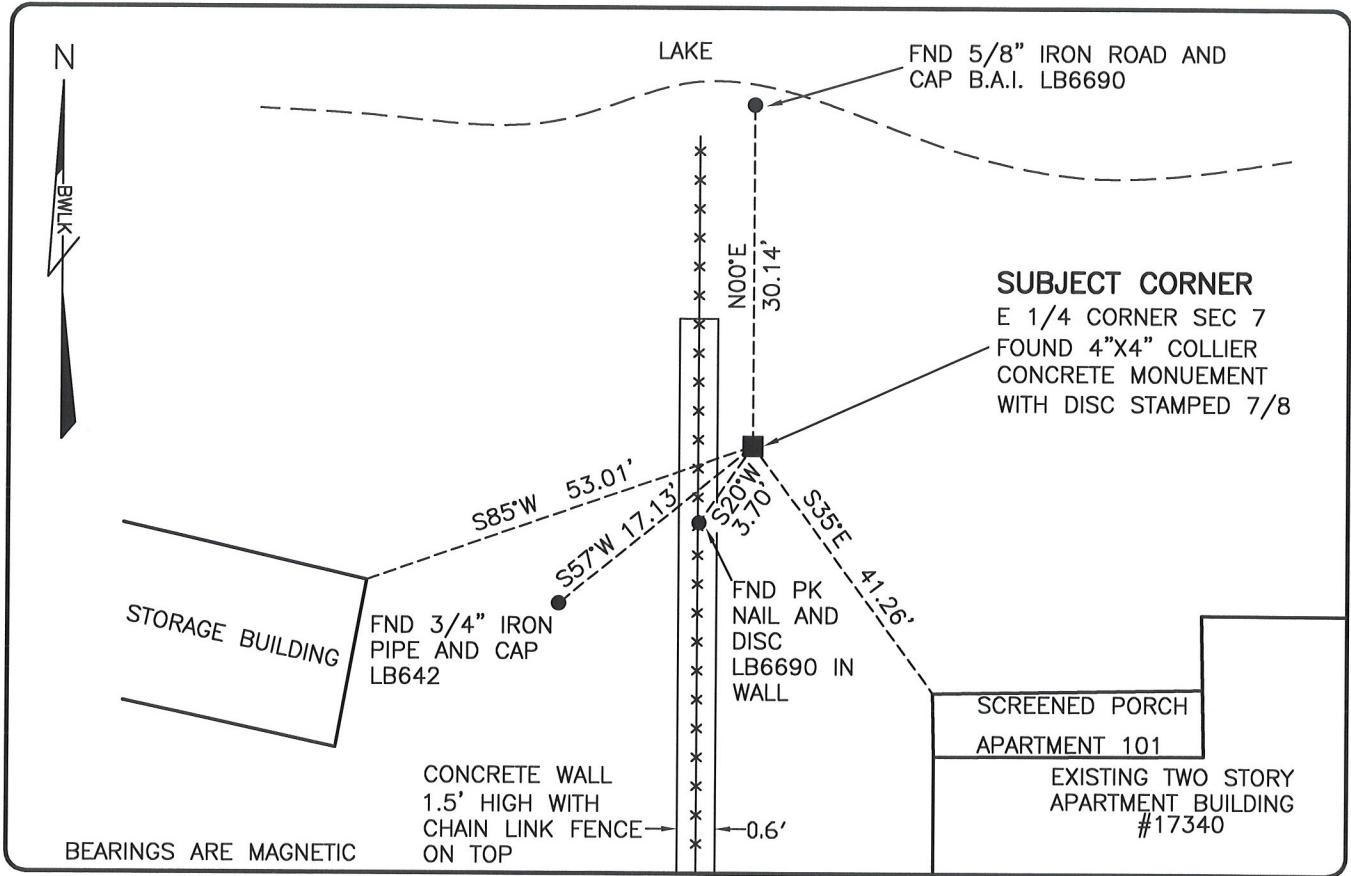


**LAND CORNER RECORD**

**PUBLIC WORKS  
LEE COUNTY, FLORIDA**

Address - 1500 Monroe St., Ft. Myers, Fla. 33901

Phone : (239) 479-8900

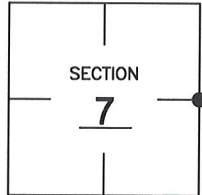


**COMMENTS:**

FOUND 4"x4" "COLLIER" CONCRETE MONUMENT 18" BELOW GRADE.

**CORNER DESCRIPTION**

E 1/4 Corner  
Section 7  
Township 46  
Range 25



**HORIZONTAL POSITION INFORMATION**

Florida West Zone, NAD 1983(1990 Adjustment)

Northing(ft) 782105.38 Easting(ft) 709180.15

Latitude 26°29'06.9856" Longitude 81°50'16.5247"

Scale Factor 0.99994

**EXISTING CERTIFIED CORNER RECORDS**

Document No.	Date
<u>59919</u>	<u>2-6-97</u>
<u>16886</u>	<u>5-6-83</u>
<u>4270</u>	<u>6-26-79</u>
<u>9578</u>	

The above documents are based on FDEP Bureau of Surveying and Mapping Record Information.

I hereby certify the monument and accessories shown above were field located on 6-13-08.

*Scott C. Whitaker*  
**SCOTT C. WHITAKER**  
Professional Surveyor and Mapper  
Florida Certificate No. 4324  
Date Signed 7/14/08

BEAN, WHITAKER, LUTZ & KAREH, INC. (LB 4919)  
13041 McGregor Boulevard  
Fort Myers, Florida 33919-5910  
Phone: (239) 481-1331

POINT NO. 12202

BLM REFERENCE NO. T46SR25E200640