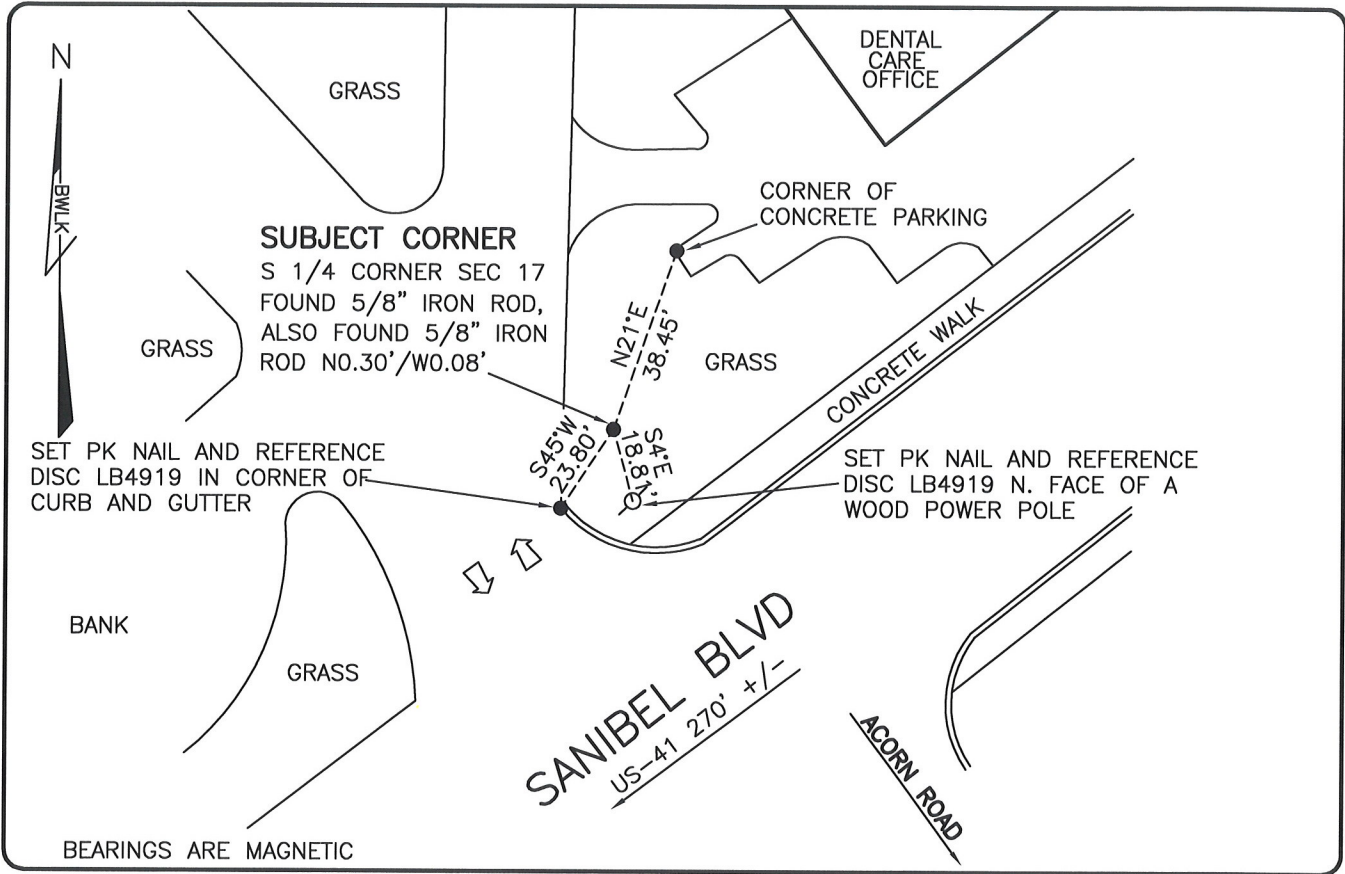


**LAND CORNER RECORD**

**PUBLIC WORKS  
LEE COUNTY, FLORIDA**

Address - 1500 Monroe St., Ft. Myers, Fla. 33901

Phone : (239) 479-8900

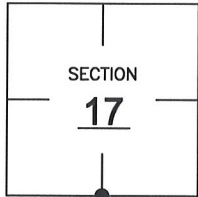


**COMMENTS:**

FOUND 5/8" IRON ROAD WITH EVIDENCE OF CONCRETE MONUMENT (PIECES) IN VICINITY. VERIFIED BY HISTORICAL RECORDS TO S.W. AND S.E. CORNERS OF SECTION 17.

**CORNER DESCRIPTION**

S 1/4 Corner  
Section 17  
Township 46  
Range 25



**HORIZONTAL POSITION INFORMATION**

Florida West Zone, NAD 1983(1990 Adjustment)  
 Northing(ft) 774305.35 Easting(ft) 711934.87  
 Latitude 26°27'49.6970" Longitude 81°49'46.3196"  
 Scale Factor 0.99994

**EXISTING CERTIFIED CORNER RECORDS**

Document No.	Date

The above documents are based on FDEP Bureau of Surveying and Mapping Record Information.

I hereby certify the monument and accessories shown above were field located on 6-13-08.

*Scott C. Whitaker*  
**SCOTT C. WHITAKER**  
 Professional Surveyor and Mapper  
 Florida Certificate No. 4324  
 Date Signed 7/14/08

BEAN, WHITAKER, LUTZ & KAREH, INC. (LB 4919)  
 13041 McGregor Boulevard  
 Fort Myers, Florida 33919-5910  
 Phone: (239) 481-1331

POINT NO. 12201

BLM REFERENCE NO. T46SR25E240400