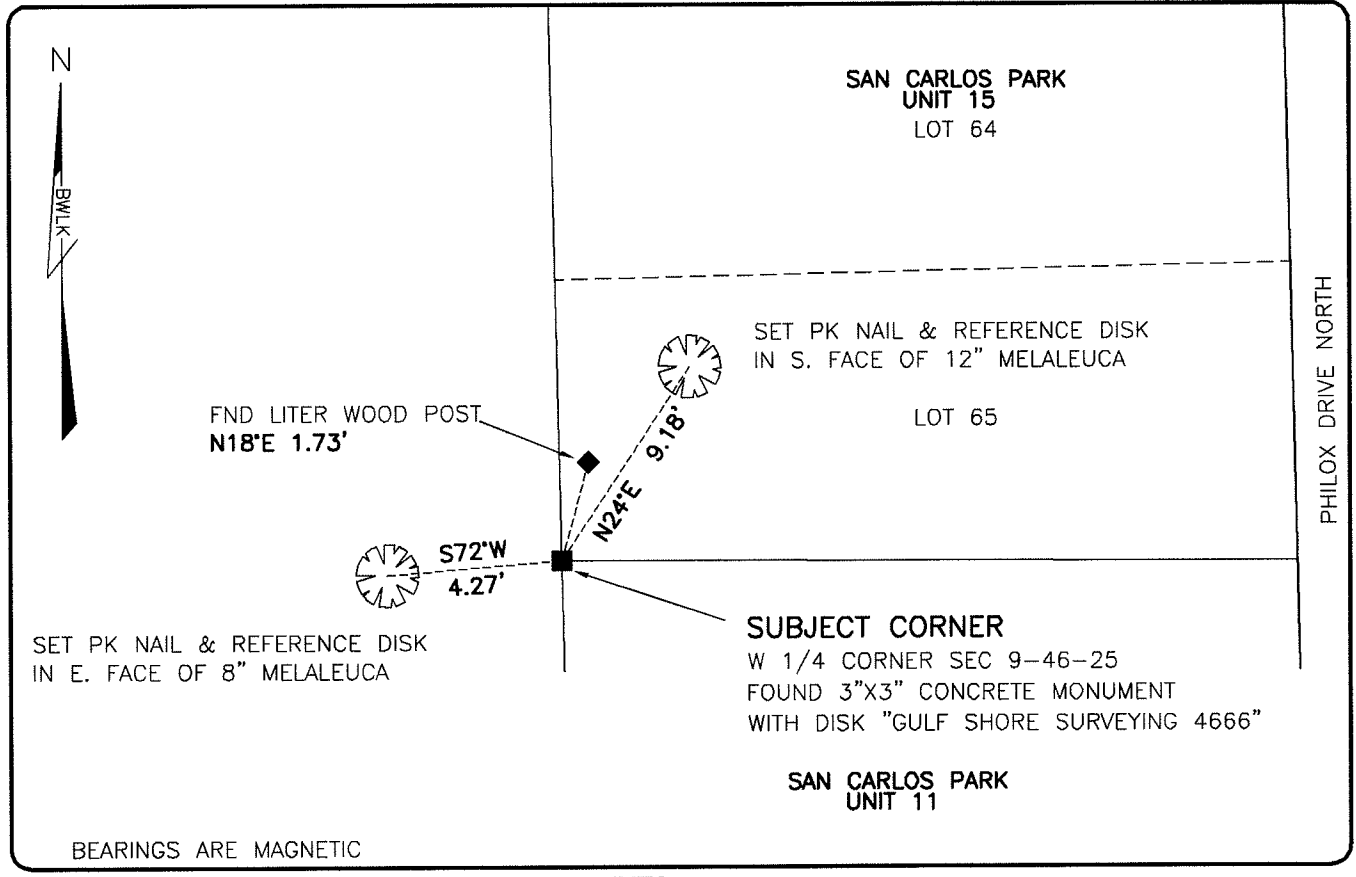


**LAND CORNER RECORD**

**PUBLIC WORKS  
LEE COUNTY, FLORIDA**

Address - 1500 Monroe St., Ft. Myers, Fla. 33901

Phone : (239) 479-8900



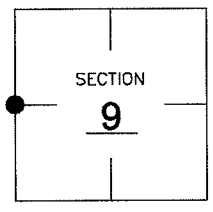
BEARINGS ARE MAGNETIC

**COMMENTS:**

FOUND SUBJECT CORNER IN HARMONY WITH THE UNRECORDED PLAT OF SAN CARLOS PARK UNIT 15.

**CORNER DESCRIPTION**

W 1/4 Corner  
Section 9  
Township 46  
Range 25



**HORIZONTAL POSITION INFORMATION**

Florida West Zone, NAD 1983(1990 Adjustment)  
Northing(ft) 782180.70 Easting(ft) 714455.08  
Latitude 26°29'07.6624" Longitude 81°49'18.4669"  
Scale Factor 0.99994

**EXISTING CERTIFIED CORNER RECORDS**

Document No.	Date
<b>NONE</b>	<b>NONE</b>

The above documents are based on FDEP Bureau of Surveying and Mapping Record Information.

I hereby certify the monument and accessories shown above were field located on 8-13-07.

*Scott C. Whitaker*

**SCOTT C. WHITAKER**  
Professional Surveyor and Mapper  
Florida Certificate No. 4324  
Date Signed 9/20/07

BEAN, WHITAKER, LUTZ & KAREH, INC. (LB 4919)  
13041 McGregor Boulevard  
Fort Myers, Florida 33919-5910  
Phone: (239) 481-1331

**POINT NO. 12191**

**BLM REFERENCE NO. T46SR25E300540**