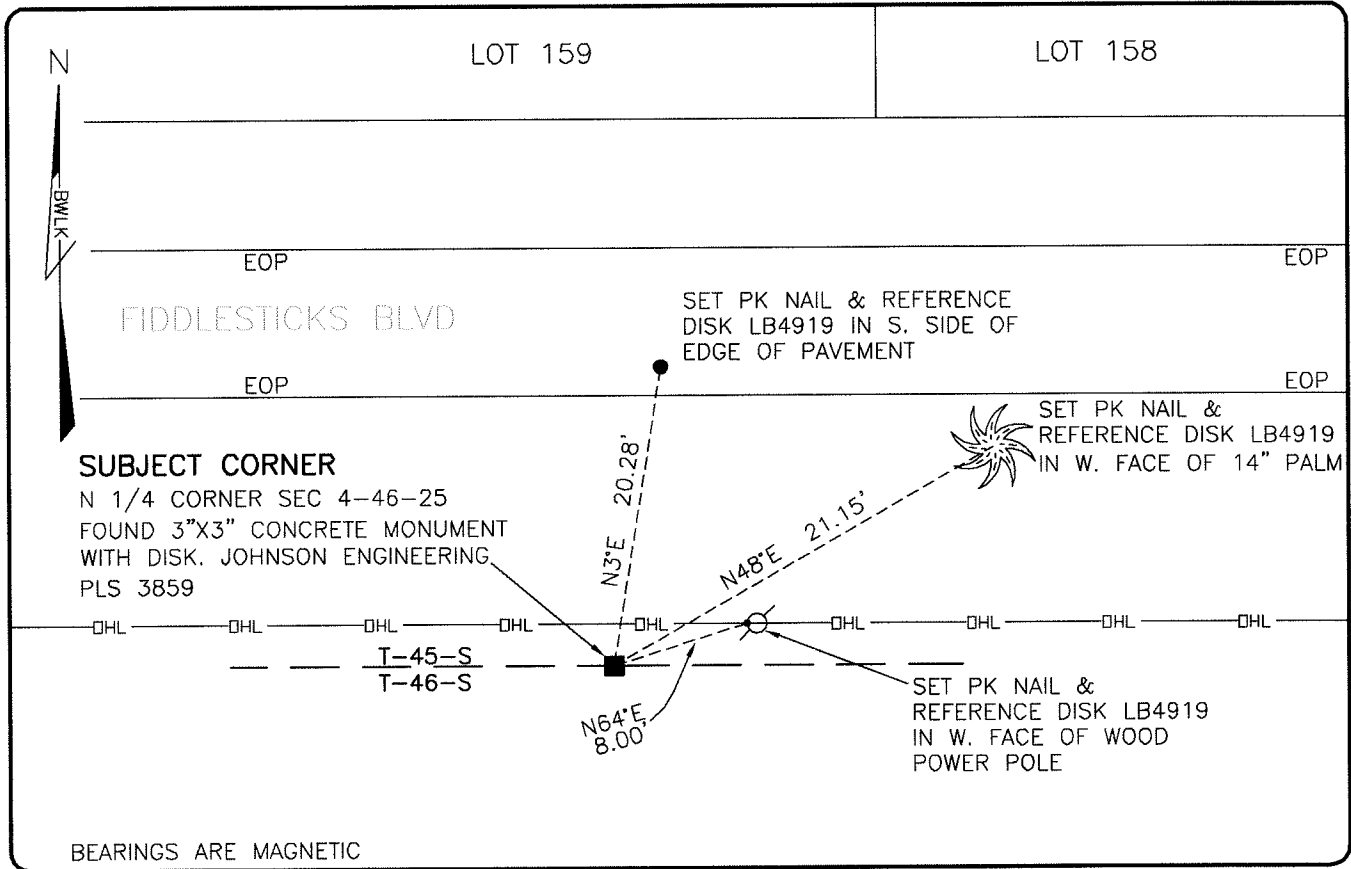


**LAND CORNER RECORD**

**PUBLIC WORKS  
LEE COUNTY, FLORIDA**

Address - 1500 Monroe St., Ft. Myers, Fla. 33901

Phone : (239) 479-8900



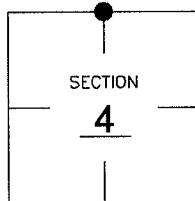
BEARINGS ARE MAGNETIC

**COMMENTS:**

FOUND SUBJECT CORNER IN HARMONY WITH THE RECORD PLAT OF FIDDLE STICKS COUNTRY CLUB. PLAT BOOK 34 PAGE 156.

**CORNER DESCRIPTION**

**N 1/4** Corner  
Section 4  
Township 46  
Range 25



**HORIZONTAL POSITION INFORMATION**

Florida West Zone, NAD 1983(1990 Adjustment)

Northing(ft) 791367.22 Easting(ft) 716963.71

Latitude 26°30'38.6122" Longitude 81°48'50.7102"

Scale Factor 0.99994

**EXISTING CERTIFIED CORNER RECORDS**

Document No. 14670 Date 7-12-82


The above documents are based on FDEP Bureau of Surveying and Mapping Record Information.

I hereby certify the monument and accessories shown above were field located on 8-15-07.

*Scott C. Whitaker*  
**SCOTT C. WHITAKER**  
Professional Surveyor and Mapper  
Florida Certificate No. 4324  
Date Signed 9/24/07

BEAN, WHITAKER, LUTZ & KAREH, INC. (LB 4919)  
13041 McGregor Boulevard  
Fort Myers, Florida 33919-5910  
Phone: (239) 481-1331

POINT NO. 12190

BLM REFERENCE NO. T46SR25E340700