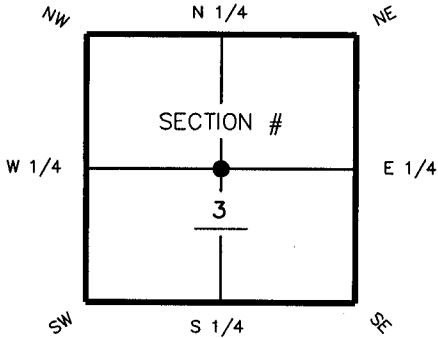


C-15 CERTIFIED CORNER RECORD

CORNER DESCRIPTION: MONUMENTATION DESCRIPTION (EVIDENCE FOUND OR METHOD TO SET)

Depict corner with ●

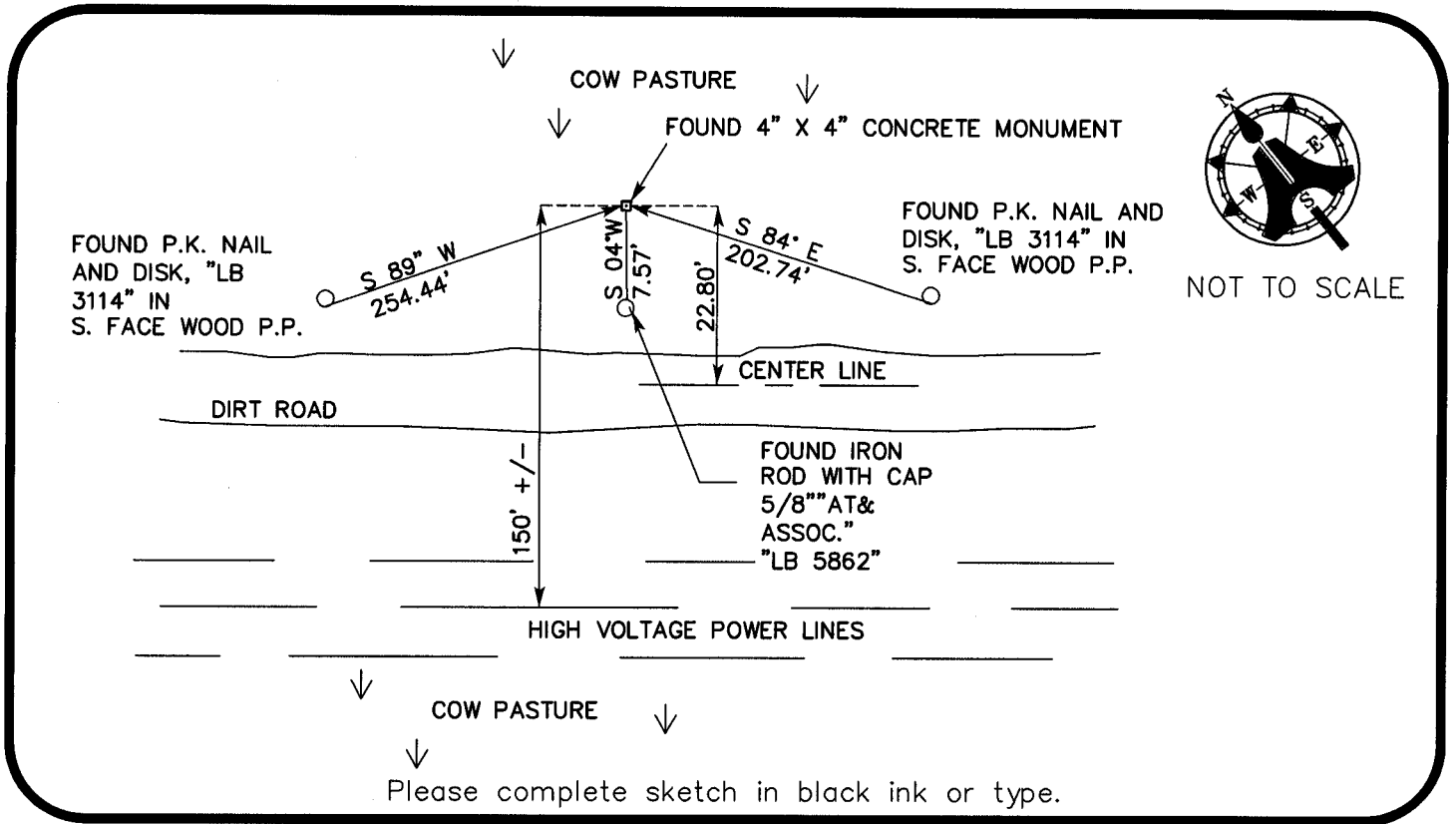
FOUND 4" X 4" CONCRETE MONUMENT WITH DISK STAMPED  
"AIM ENGINEERING AND SURVEYING , INC. LB 3114 PRM CTR 3"



CTR corner of Section 3  
Twp 46 South, Rge 25 East  
Tallahassee Base Meridian,  
LEE County(s), Florida

HORIZONTAL POSITION AND HEIGHT INFORMATION ( if determined ):

Latitude 26° 30' 00.5576" N Longitude 81° 47' 51.7730" W  
Y(NORTHING-Ft.) 787533.041 X(EASTING-Ft.) 722323.133 Zone FL WEST  
Convergence 00° 05' 24.9" Scale factor 0.99994620  
Coordinate determination (circle one): Field traverse GPS  
Horizontal datum (circle one): NAD27 NAD83(1986) NAD83(1990) other (explain)  
Accuracy (circle one): 1st 2nd 3rd other \_\_\_\_\_



Please complete sketch in black ink or type.

SURVEYORS CERTIFICATE:

I certify the monument and accessories indicated above were field located on 10/14/03

[Signature] SIGNATURE  
DATE 04/20/04  
5688 PSM NO.  
AIM ENGINEERING & SURVEYING, INC. LB 3114  
FIRM OR AGENCY LB NO.  
5300 LEE BOULEVARD ADDRESS  
LEHIGH ACRES, FLORIDA 33971  
CITY STATE ZIP

SEND ORIGINAL TO:  
Department of Environmental Protection  
Bureau of Survey and Mapping  
3900 Commonwealth Boulevard  
Mail Station 105  
Tallahassee, Florida 32399

D.E.P. USE ONLY  
Completeness checked by: CH  
Accepted and filed: 5-12-04 Date  
B.L.M. - I.D. 140 640  
QUAD - I.D. 2115 Fort Myers SE

EMBOSSSED SEAL OVER SIGNATURE