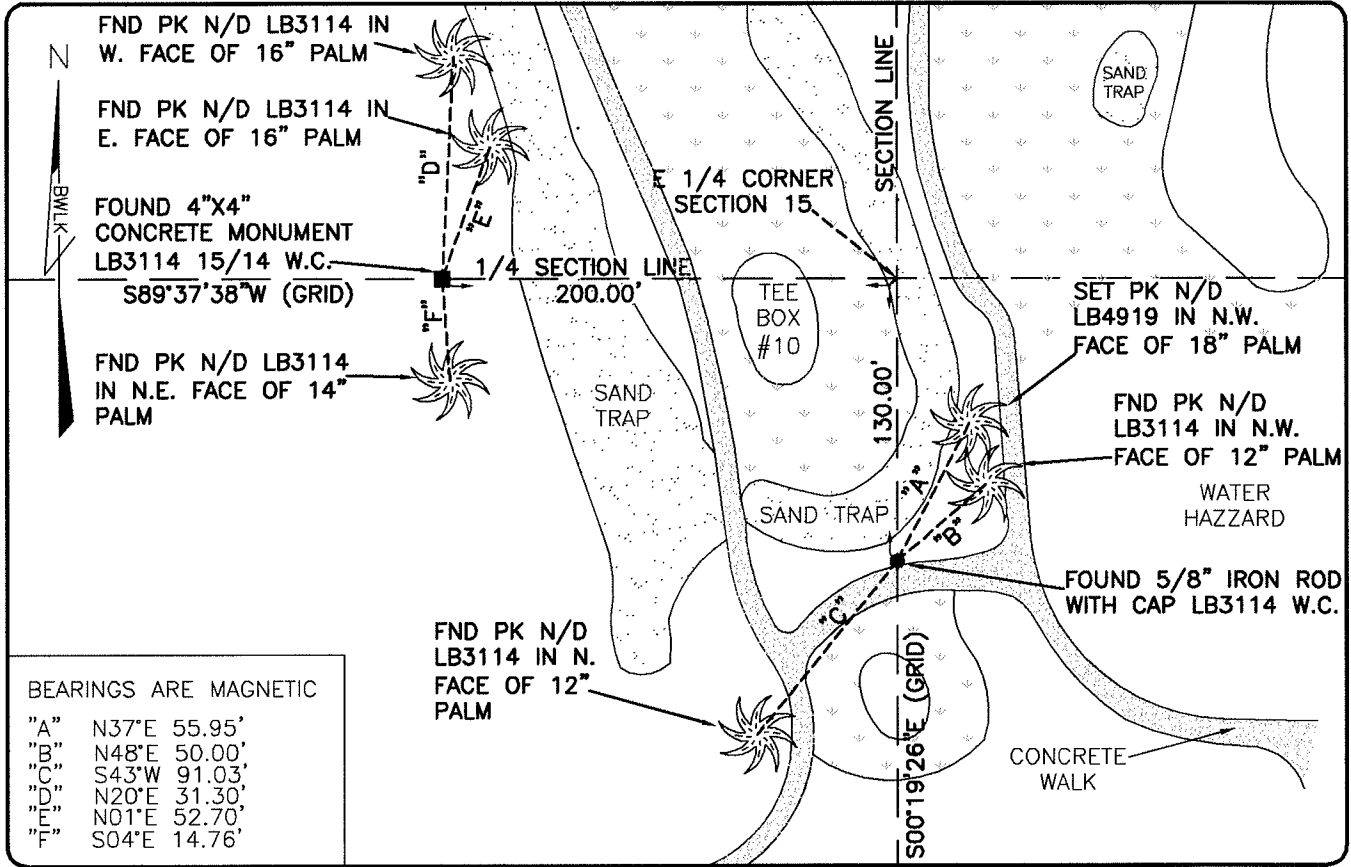


**LAND CORNER RECORD**

**PUBLIC WORKS  
LEE COUNTY, FLORIDA**

Address - 1500 Monroe St., Ft. Myers, Fla. 33901

Phone : (239) 479-8900



BEARINGS ARE MAGNETIC

- "A" N37°E 55.95'
- "B" N48°E 50.00'
- "C" S43°W 91.03'
- "D" N20°E 31.30'
- "E" N01°E 52.70'
- "F" S04°E 14.76'

**COMMENTS:**

CORNER FALLS IN SANDTRAP. DID NOT RESET. CORNER AND REFERENCES IN HARMONY WITH CCR 79057.

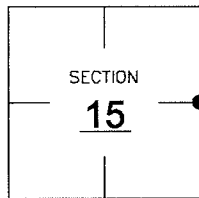
**CORNER DESCRIPTION**

E 1/4 Corner

Section 15

Township 46

Range 25



**HORIZONTAL POSITION INFORMATION**

Florida West Zone, NAD 1983(1990 Adjustment)

Northing(ft) 776920.79 Easting(ft) 725151.82

Latitude 26°28'15.4068" Longitude 81°47'20.8322"

Scale Factor 0.99994

**EXISTING CERTIFIED CORNER RECORDS**

Document No. 79057 Date 10-04-02


The above documents are based on FDEP Bureau of Surveying and Mapping Record Information.

I hereby certify the monument and accessories shown above were field located on 6-18-07.

*Scott C. Whitaker*

**SCOTT C. WHITAKER**  
Professional Surveyor and Mapper  
Florida Certificate No. 4324  
Date Signed 6-22-07

BEAN, WHITAKER, LUTZ & KAREH, INC. (LB 4919)  
13041 McGregor Boulevard  
Fort Myers, Florida 33919-5910  
Phone: (239) 481-1331

POINT NO. 12128

BLM REFERENCE NO. T46SR25E500440