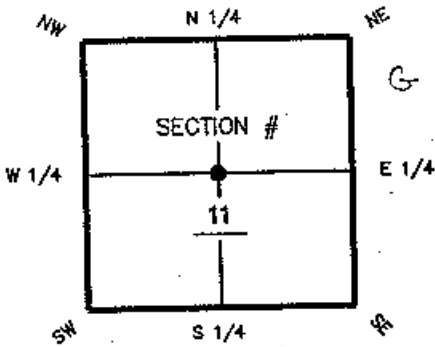


G-19 CERTIFIED CORNER RECORD

CORNER DESCRIPTION: MONUMENTATION DESCRIPTION (EVIDENCE FOUND OR METHOD TO SET)

Depict corner with ●

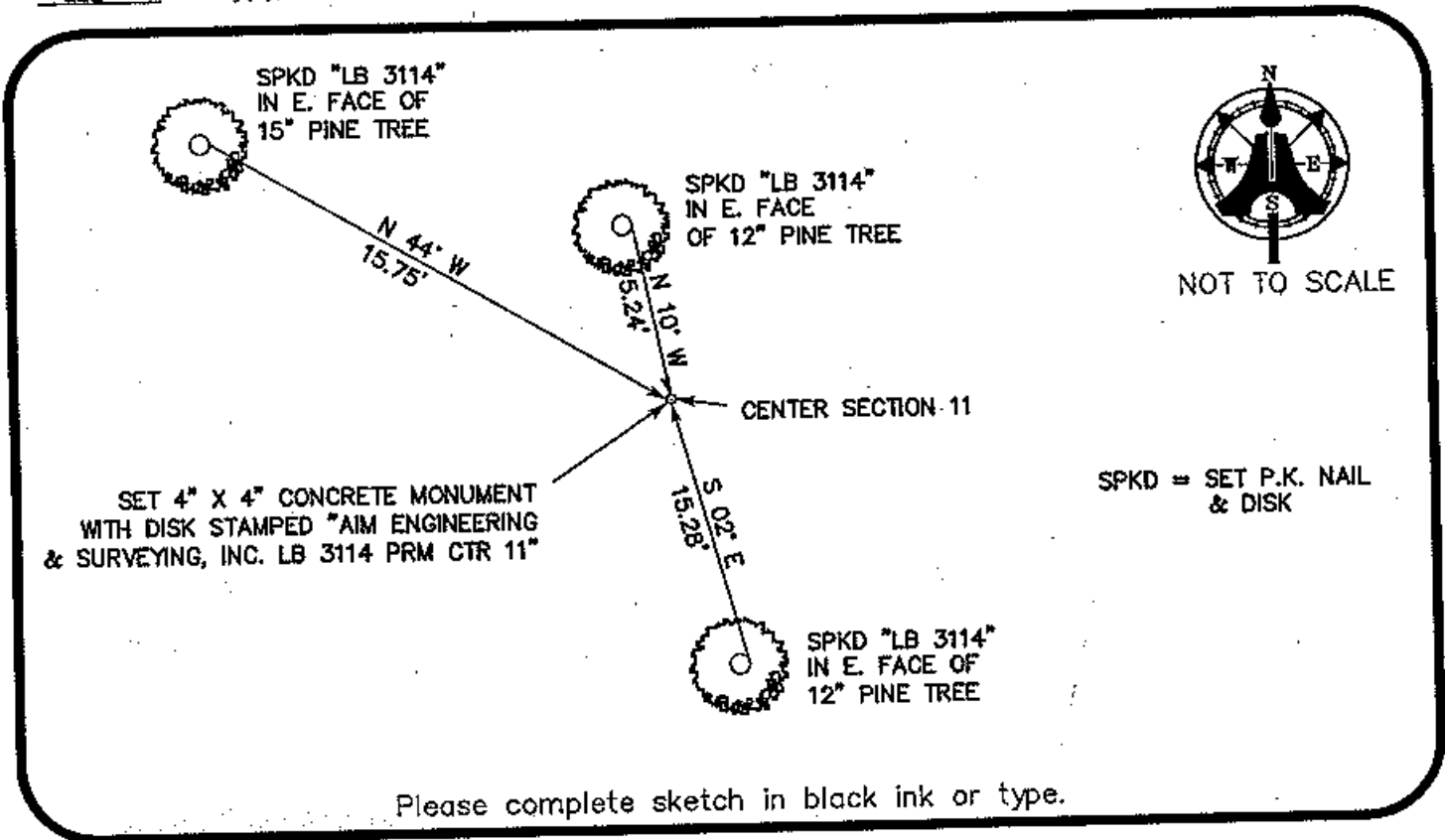
SET 4" X 4" CONCRETE MONUMENT WITH DISK STAMPED
"AIM ENGINEERING & SURVEYING, INC. LB 3114 PRM CTR 11"



CTR corner of Section 11
Twp 46 South, Rge 25 East
Tallahassee Base Meridian,
LEE County(s), Florida

HORIZONTAL POSITION AND HEIGHT INFORMATION (if determined):

Latitude 26° 29' 08.1247" N Longitude 81° 46' 52.3241" W
Y(NORTHING-Ft.) 782247.896 X(EASTING-Ft.) 727733.285 Zone FL WEST
Convergence 00° 05' 51.3" Scale factor 0.99994705
Coordinate determination (circle one): Field traverse GPS
Horizontal datum (circle one): NAD27 NAD83(1986) NAD83(1990) other (explain)
Accuracy (circle one): 1st 2nd 3rd other _____



SURVEYORS CERTIFICATE:

I certify the monument and accessories indicated above were field located on JUNE 8, 2001

SEND ORIGINAL TO:
Department of Environmental Protection
Bureau of Survey and Mapping
3900 Commonwealth Boulevard
Mail Station 105
Tallahassee, Florida 32399

J.R. Brandenburg 2995
SIGNATURE PSM NO.
DATE 9-20-01
AIM ENGINEERING & SURVEYING, INC. LB 3114
FIRM OR AGENCY LB NO.
5300 LEE BOULEVARD ADDRESS
LEHIGH ACRES, FLORIDA 33971
CITY STATE ZIP

D.E.P. USE ONLY
Completeness checked by: CS
Accepted and filed: 9-20-01 Date
B.L.M. - I.D. 540540
QUAD - I.D. 368 Estero

EMBOSSSED SEAL OVER SIGNATURE