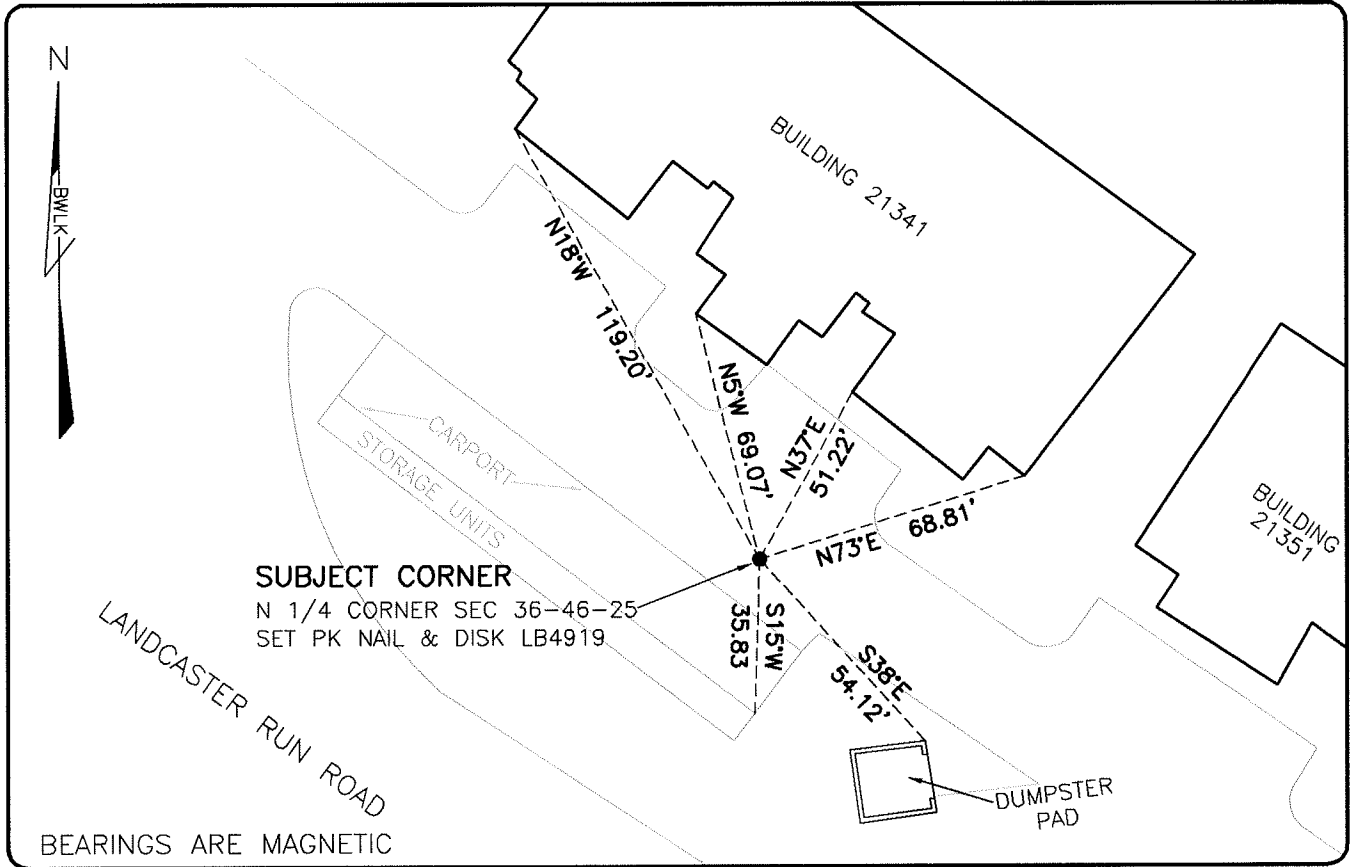


LAND CORNER RECORD

**PUBLIC WORKS
LEE COUNTY, FLORIDA**

Address - 1500 Monroe St., Ft. Myers, Fla. 33901

Phone : (239) 479-8900

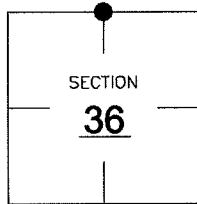


COMMENTS:

SET SUBJECT CORNER BASED ON THE SPLIT OF THE NORTH LINE.

CORNER DESCRIPTION

N 1/4 Corner
Section 36
Township 46
Range 25



HORIZONTAL POSITION INFORMATION

Florida West Zone, NAD 1983(1990 Adjustment)

Northing(ft) 763847.91 Easting(ft) 733245.46

Latitude 26°26'05.7909" Longitude 81°45'52.0274"

Scale Factor 0.99994

EXISTING CERTIFIED CORNER RECORDS

Document No. _____ Date _____
NONE **NONE**

The above documents are based on FDEP Bureau of Surveying and Mapping Record Information.

I hereby certify the monument and accessories shown above were field located on 8-30-07.

Scott C. Whitaker

SCOTT C. WHITAKER
Professional Surveyor and Mapper
Florida Certificate No. 4324
Date Signed 9/20/07

BEAN, WHITAKER, LUTZ & KAREH, INC. (LB 4919)
13041 McGregor Boulevard
Fort Myers, Florida 33919-5910
Phone: (239) 481-1331

POINT NO. 12189

BLM REFERENCE NO. T46SR25E640200