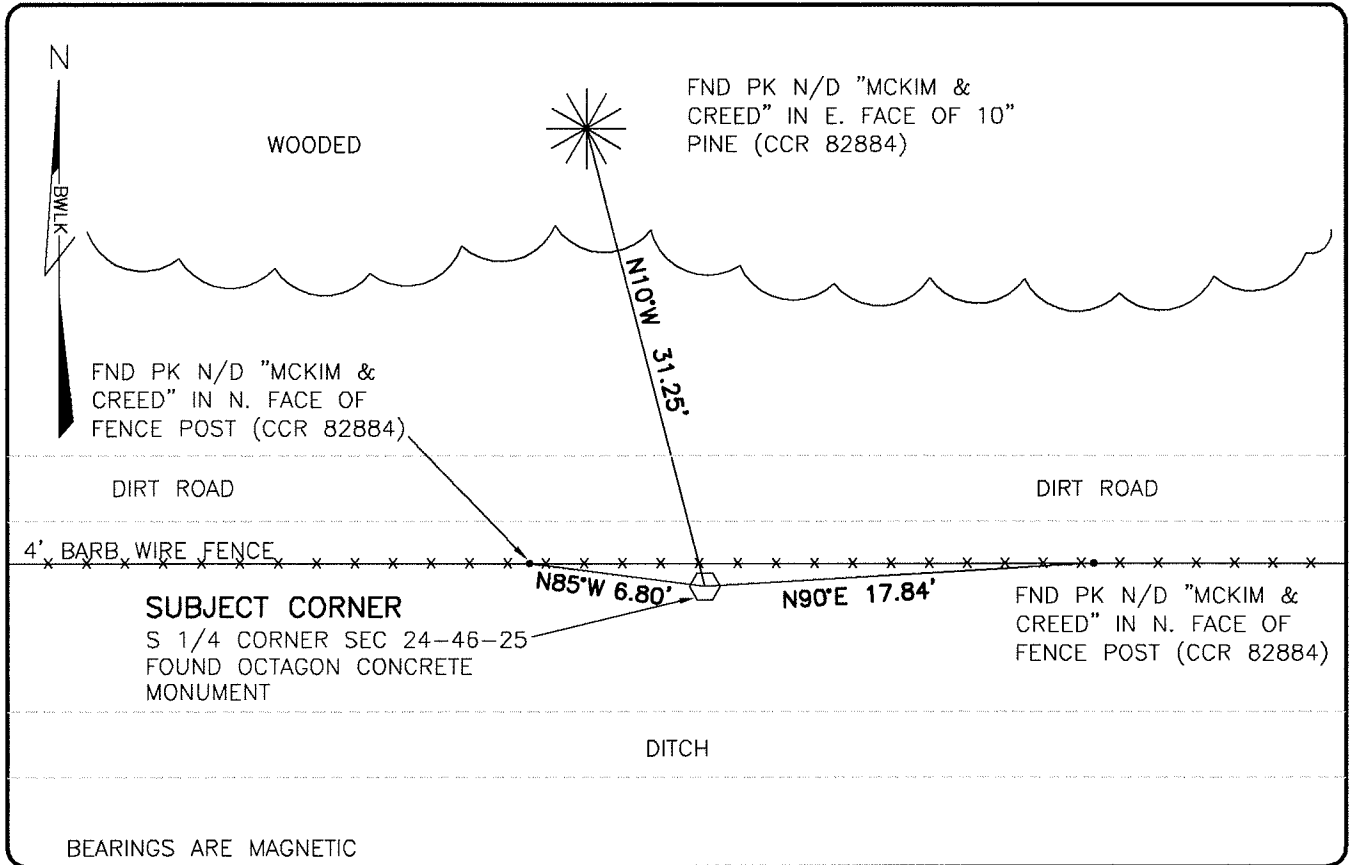


**LAND CORNER RECORD**

**PUBLIC WORKS  
LEE COUNTY, FLORIDA**

Address - 1500 Monroe St., Ft. Myers, Fla. 33901

Phone : (239) 479-8900



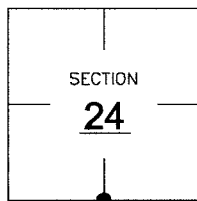
BEARINGS ARE MAGNETIC

**COMMENTS:**

FOUND SUBJECT CORNER AND REFERENCES IN HARMONY WITH CCR 82884.

**CORNER DESCRIPTION**

S 1/4 Corner  
Section 24  
Township 46  
Range 25



**HORIZONTAL POSITION INFORMATION**

Florida West Zone, NAD 1983(1990 Adjustment)

Northing(ft) 769113.14 Easting(ft) 733179.15

Latitude 26°26'57.9402" Longitude 81°45'52.6508"

Scale Factor 0.99994

**EXISTING CERTIFIED CORNER RECORDS**

Document No.	Date
<u>82884</u>	<u>9-22-04</u>

The above documents are based on FDEP Bureau of Surveying and Mapping Record Information.

I hereby certify the monument and accessories shown above were field located on 6-26-07.

*Scott C. Whitaker*

**SCOTT C. WHITAKER**  
Professional Surveyor and Mapper  
Florida Certificate No. 4324  
Date Signed 8-22-07

BEAN, WHITAKER, LUTZ & KAREH, INC. (LB 4919)  
13041 McGregor Boulevard  
Fort Myers, Florida 33919-5910  
Phone: (239) 481-1331

POINT NO. 12153

BLM REFERENCE NO. T46SR25E640300