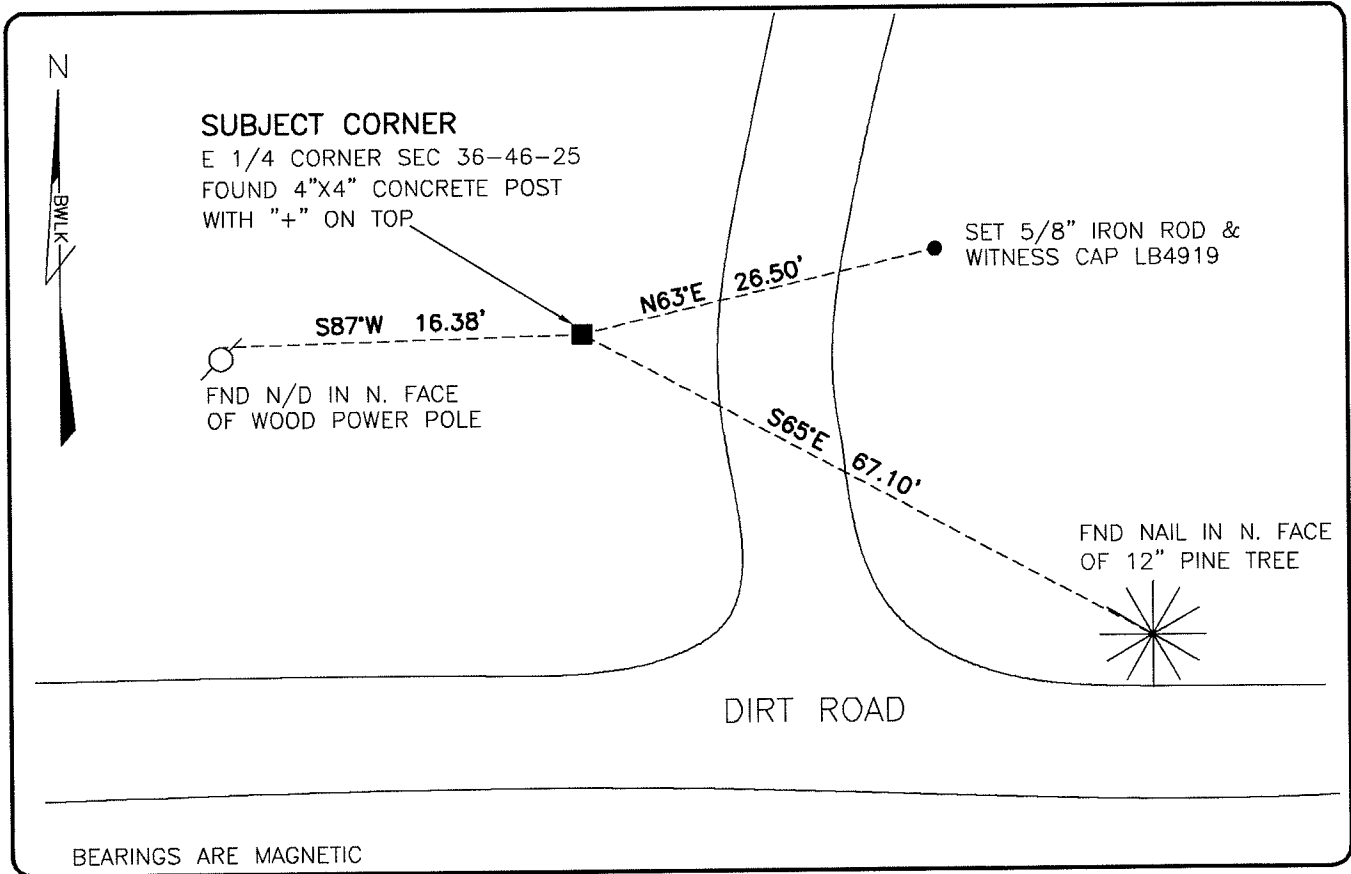


LAND CORNER RECORD

**PUBLIC WORKS
LEE COUNTY, FLORIDA**

Address - 1500 Monroe St., Ft. Myers, Fla. 33901

Phone : (239) 479-8900



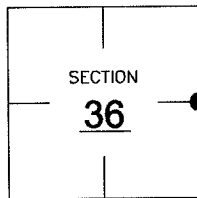
BEARINGS ARE MAGNETIC

COMMENTS:

FOUND SUBJECT CORNER IN HARMONY WITH CCR 35246 AND HISTORICAL RECORDS. REFERENCES HAVE BEEN DESTROYED. TIED TO THREE NEW REFERENCES.

CORNER DESCRIPTION

E 1/4 Corner
Section 36
Township 46
Range 25



HORIZONTAL POSITION INFORMATION

Florida West Zone, NAD 1983(1990 Adjustment)
Northing(ft) 761210.64 Easting(ft) 735916.49
Latitude 26°25'39.6216" Longitude 81°45'22.6975"
Scale Factor 0.99994

EXISTING CERTIFIED CORNER RECORDS

Document No. 35246 Date 2-26-90

The above documents are based on FDEP Bureau of Surveying and Mapping Record Information.

I hereby certify the monument and accessories shown above were field located on 8-24-07.

Scott C. Whitaker

SCOTT C. WHITAKER
Professional Surveyor and Mapper
Florida Certificate No. 4324
Date Signed 9/24/07

BEAN, WHITAKER, LUTZ & KAREH, INC. (LB 4919)
13041 McGregor Boulevard
Fort Myers, Florida 33919-5910
Phone: (239) 481-1331

POINT NO. 12184

BLM REFERENCE NO. T46SR25E700140