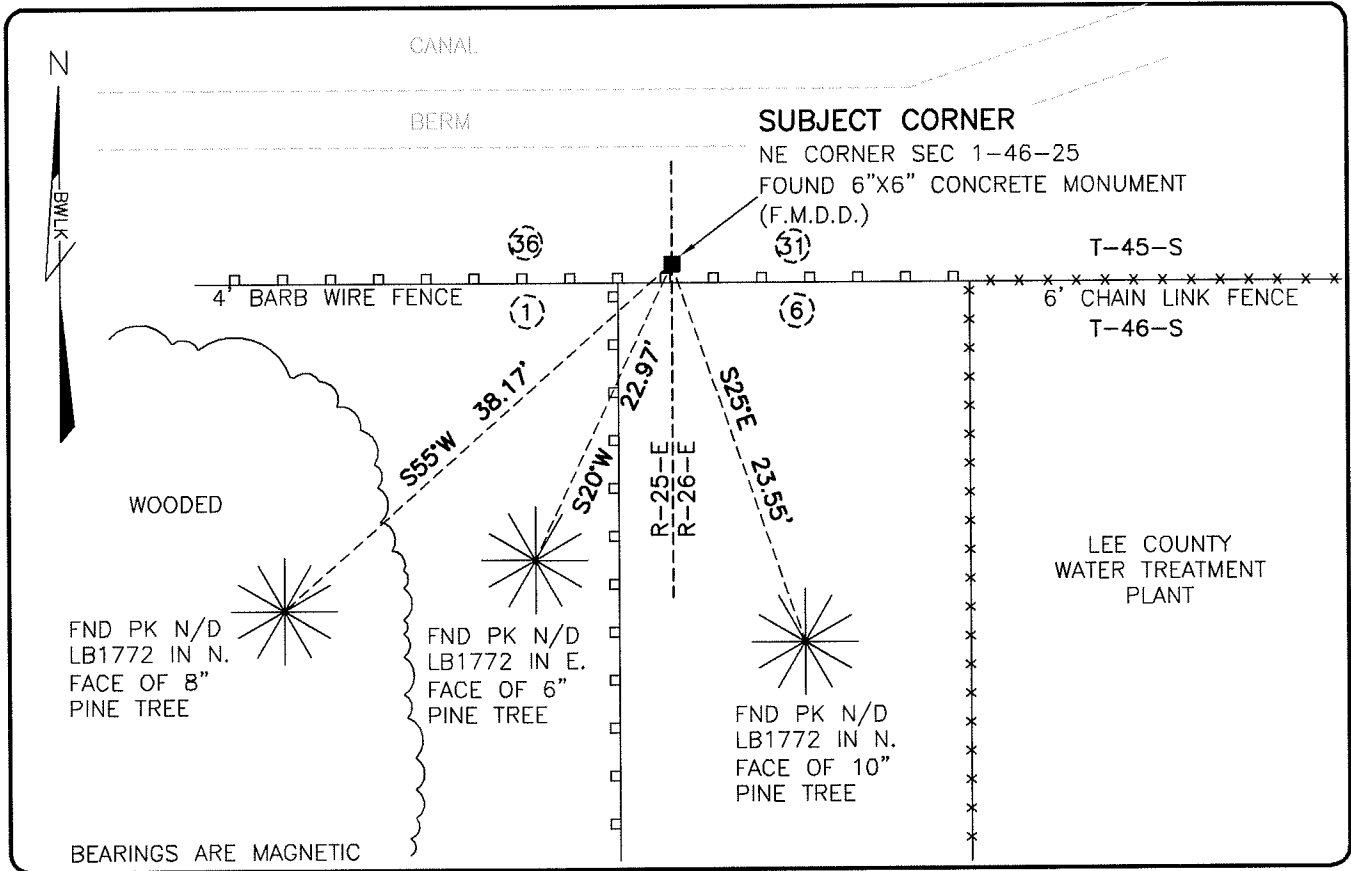


**LAND CORNER RECORD**

**PUBLIC WORKS  
LEE COUNTY, FLORIDA**

Address - 1500 Monroe St., Ft. Myers, Fla. 33901

Phone : (239) 479-8900

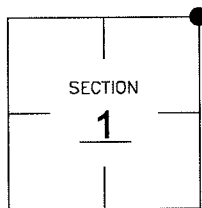


**COMMENTS:**

FOUND SUBJECT CORNER IN HARMONY WITH CCR 41710. USED AS TOWNSHIP AND RANGE CORNER SINCE 1926 +/-.

**CORNER DESCRIPTION**

**NE** Corner  
Section 1  
Township 46  
Range 25



**HORIZONTAL POSITION INFORMATION**

Florida West Zone, NAD 1983(1990 Adjustment)  
Northing(ft) 791605.06 Easting(ft) 735466.88  
Latitude 26°30'40.6620" Longitude 81°45'27.0128"  
Scale Factor 0.99994

**EXISTING CERTIFIED CORNER RECORDS**

Document No. 41710 Date 5-24-91

The above documents are based on FDEP Bureau of Surveying and Mapping Record Information.

I hereby certify the monument and accessories shown above were field located on 7-24-07.

*Scott C. Whitaker*  
**SCOTT C. WHITAKER**  
Professional Surveyor and Mapper  
Florida Certificate No. 4324  
Date Signed 8-22-07

BEAN, WHITAKER, LUTZ & KAREH, INC. (LB 4919)  
13041 McGregor Boulevard  
Fort Myers, Florida 33919-5910  
Phone: (239) 481-1331

POINT NO. 12175

BLM REFERENCE NO. T46SR25E700700