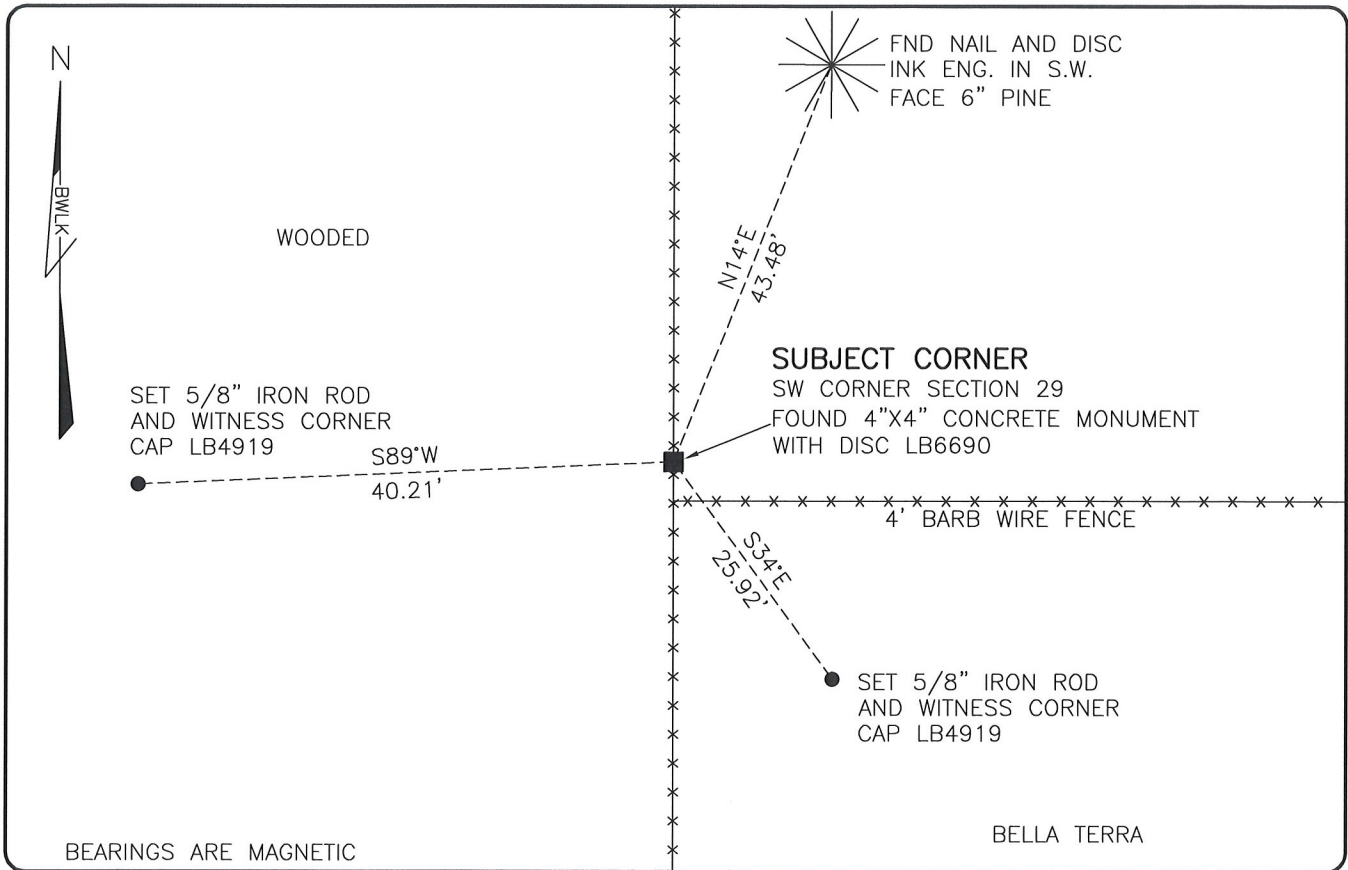


LAND CORNER RECORD

**PUBLIC WORKS
LEE COUNTY, FLORIDA**

Address - 1500 Monroe St., Ft. Myers, Fla. 33901

Phone : (239) 479-8900

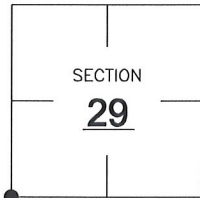


COMMENTS:

FOUND SUBJECT CORNER IN HARMONY WITH THE RECORD PLAT OF BELLA TERRA UNIT ONE (P.B. 77 PG.84). ALSO, CONFORMS WITH ONE REFERENCE STILL IN PLACE FROM CCR 18666. SET TWO ADDITIONAL REFERENCES.

CORNER DESCRIPTION

SW Corner
Section 29
Township 46
Range 26



HORIZONTAL POSITION INFORMATION

Florida West Zone, NAD 1983(2007 Adjustment)

Northing(ft) 763912.50 Easting(ft) 741158.75

Latitude 26°26'06.2799" Longitude 81°44'24.9696"

Scale Factor 0.99995

EXISTING CERTIFIED CORNER RECORDS

Document No.	Date
_____	_____
_____	_____
_____	_____
_____	_____

The above documents are based on FDEP Bureau of Surveying and Mapping Record Information.

I hereby certify the monument and accessories shown above were field located on 4-7-08.

Scott C. Whitaker

SCOTT C. WHITAKER
Professional Surveyor and Mapper
Florida Certificate No. 4324
Date Signed 5/30/08

BEAN, WHITAKER, LUTZ & KAREH, INC. (LB 4919)
13041 McGregor Boulevard
Fort Myers, Florida 33919-5910
Phone: (239) 481-1331

POINT NO. 14025

BLM REFERENCE NO. T46SR26E200200