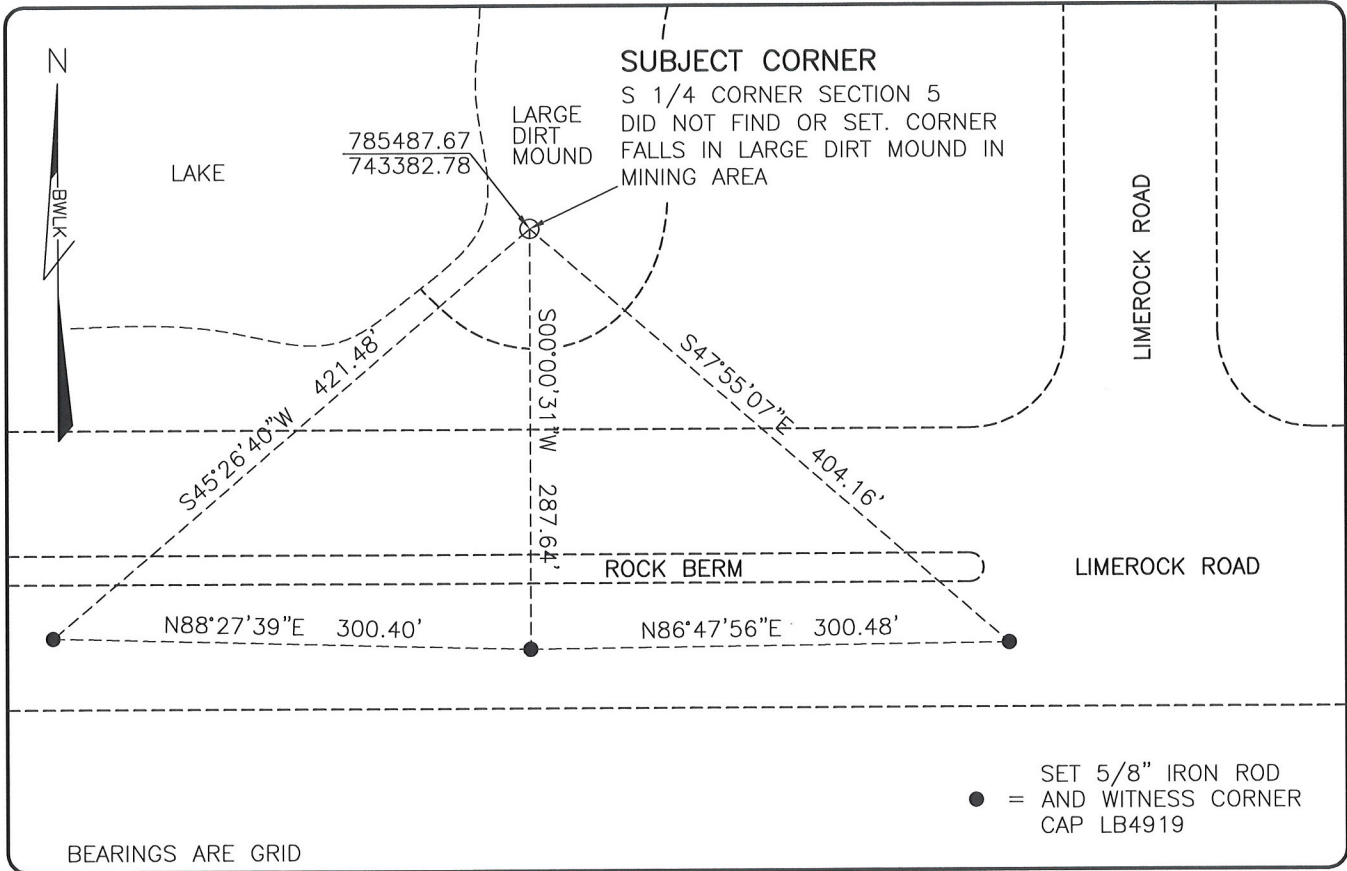


LAND CORNER RECORD

**PUBLIC WORKS
LEE COUNTY, FLORIDA**

Address - 1500 Monroe St., Ft. Myers, Fla. 33901

Phone : (239) 479-8900



BEARINGS ARE GRID

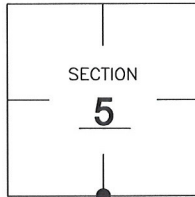
● = SET 5/8" IRON ROD
AND WITNESS CORNER
CAP LB4919

COMMENTS:

SUBJECT CORNER NOT FOUND OR SET, CORNER FALLS IN LARGE DIRT MOUND IN MINING AREA. CALCULATED POSITION BASED ON HISTORICAL RECORDS.

CORNER DESCRIPTION

S 1/4 Corner
Section 5
Township 46
Range 26



HORIZONTAL POSITION INFORMATION

Florida West Zone, NAD 1983(2007 Adjustment)

Northing(ft) 785487.67 Easting(ft) 743382.78

Latitude 26°29'39.9191" Longitude 81°44'00.0101"

Scale Factor 0.99995

EXISTING CERTIFIED CORNER RECORDS

Document No. 41717 Date 1-21-92

The above documents are based on FDEP Bureau of Surveying and Mapping Record Information.

I hereby certify the monument and accessories shown above were field located on 7-16-08.

Scott C. Whitaker

SCOTT C. WHITAKER
Professional Surveyor and Mapper
Florida Certificate No. 4324
Date Signed 7/29/08

BEAN, WHITAKER, LUTZ & KAREH, INC. (LB 4919)
13041 McGregor Boulevard
Fort Myers, Florida 33919-5910
Phone: (239) 481-1331

POINT NO. 14083

BLM REFERENCE NO. T46SR26E240600