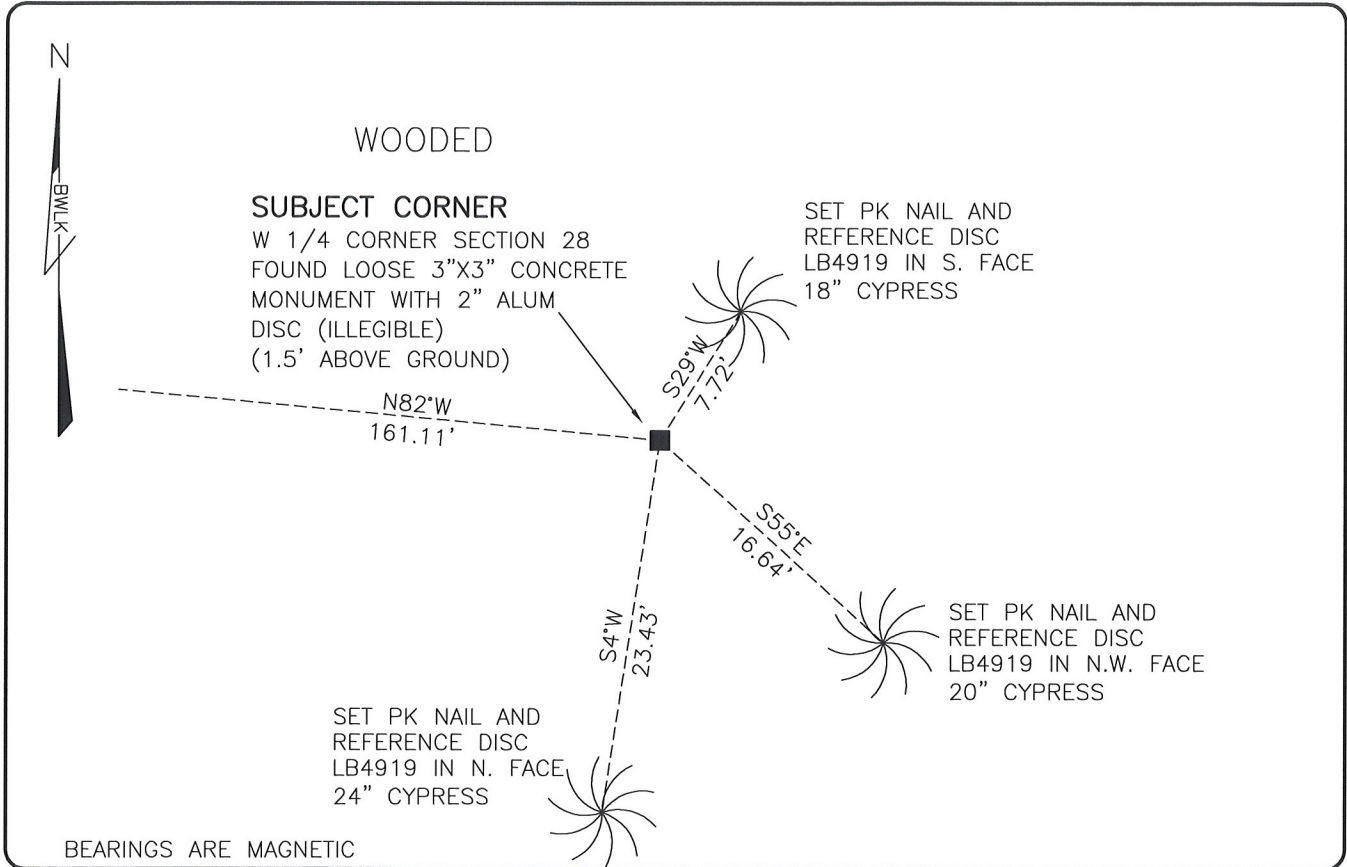


LAND CORNER RECORD

**PUBLIC WORKS
LEE COUNTY, FLORIDA**

Address - 1500 Monroe St., Ft. Myers, Fla. 33901

Phone : (239) 479-8900

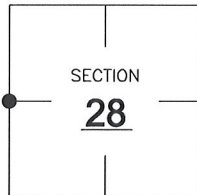


COMMENTS:

FOUND SUBJECT CORNER IN HARMONY WITH THE RECORD PLAT OF BELLA TERRA UNIT ONE (P.B.77 PG.84) AND BELLA TERRA UNIT TWO (P.B.81 PG.1). NO CCR'S ARE ON FILE.

CORNER DESCRIPTION

W 1/4 Corner
Section 28
Township 46
Range 26



HORIZONTAL POSITION INFORMATION

Florida West Zone, NAD 1983(2007 Adjustment)

Northing(ft) 766608.93 Easting(ft) 746425.89

Latitude 26°26'32.8773" Longitude 81°43'26.9606"

Scale Factor 0.99995

EXISTING CERTIFIED CORNER RECORDS

Document No.	Date

The above documents are based on FDEP Bureau of Surveying and Mapping Record Information.

I hereby certify the monument and accessories shown above were field located on 3-28-08.

Scott C. Whitaker
SCOTT C. WHITAKER
Professional Surveyor and Mapper
Florida Certificate No. 4324
Date Signed 5/30/08

BEAN, WHITAKER, LUTZ & KAREH, INC. (LB 4919)
13041 McGregor Boulevard
Fort Myers, Florida 33919-5910
Phone: (239) 481-1331

POINT NO. 14024

BLM REFERENCE NO. T46SR26E300240