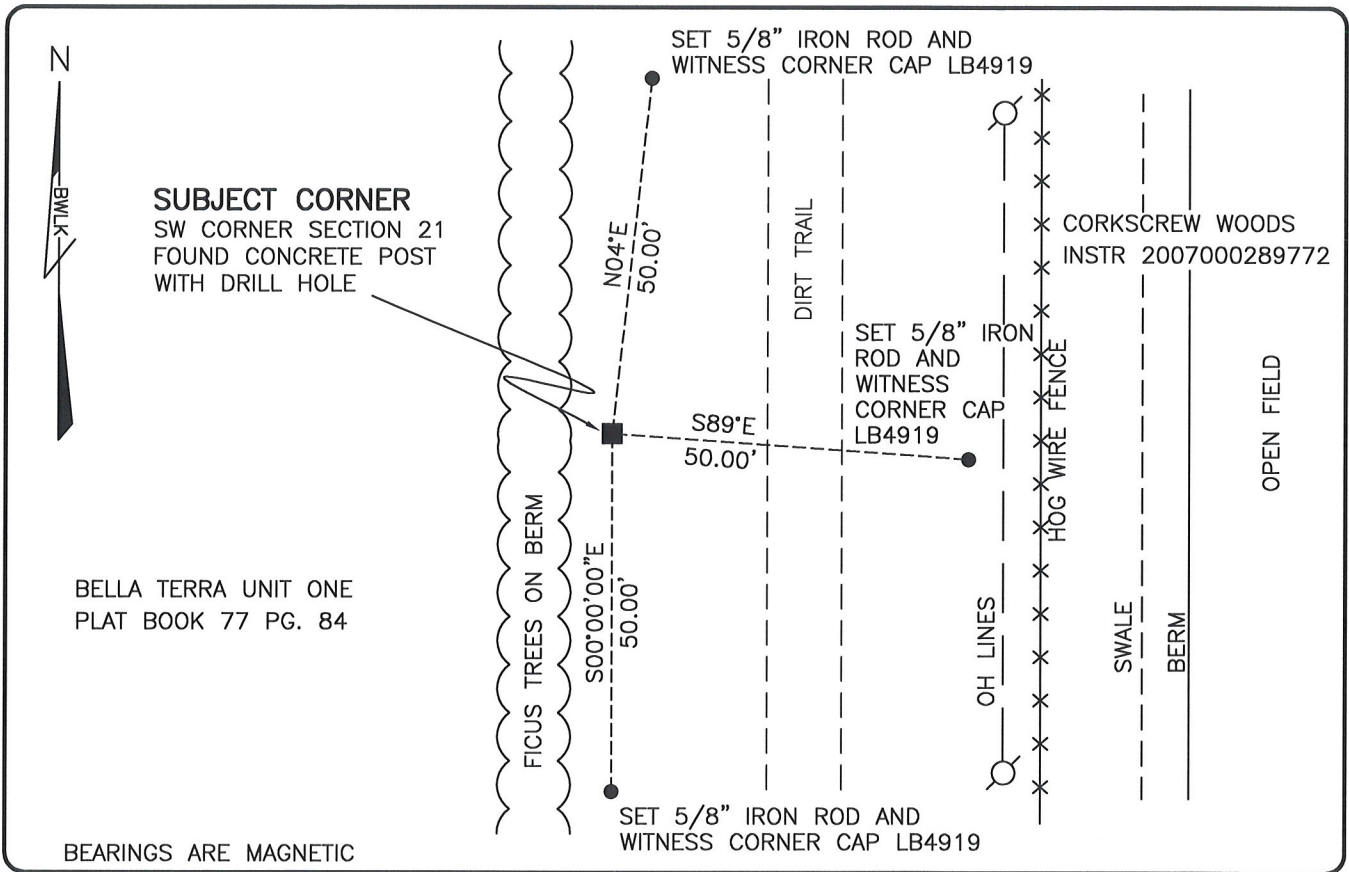


LAND CORNER RECORD

**PUBLIC WORKS
LEE COUNTY, FLORIDA**

Address - 1500 Monroe St., Ft. Myers, Fla. 33901

Phone : (239) 479-8900

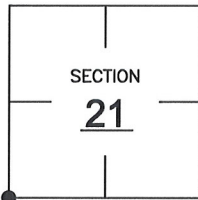


COMMENTS:

SUBJECT CORNER IN HARMONY WITH HISTORICAL RECORDS AND THE RECORD PLAT OF BELLA TERRA UNIT ONE.

CORNER DESCRIPTION

SW Corner
Section 21
Township 46
Range 26



HORIZONTAL POSITION INFORMATION

Florida West Zone, NAD 1983(2007 Adjustment)

Northing(ft) 769253.49 Easting(ft) 746327.54

Latitude 26°26'59.0716" Longitude 81°43'27.9804"

Scale Factor 0.99995

EXISTING CERTIFIED CORNER RECORDS

Document No.	Date
<u>67556</u>	<u>2-23-00</u>
<u>24702</u>	<u>12-17-86</u>

The above documents are based on FDEP Bureau of Surveying and Mapping Record Information.

I hereby certify the monument and accessories shown above were field located on 3-17-08.

Scott C. Whitaker

SCOTT C. WHITAKER
Professional Surveyor and Mapper
Florida Certificate No. 4324
Date Signed 5/30/08

BEAN, WHITAKER, LUTZ & KAREH, INC. (LB 4919)
13041 McGregor Boulevard
Fort Myers, Florida 33919-5910
Phone: (239) 481-1331

POINT NO. 14007

BLM REFERENCE NO. T46SR26E300300