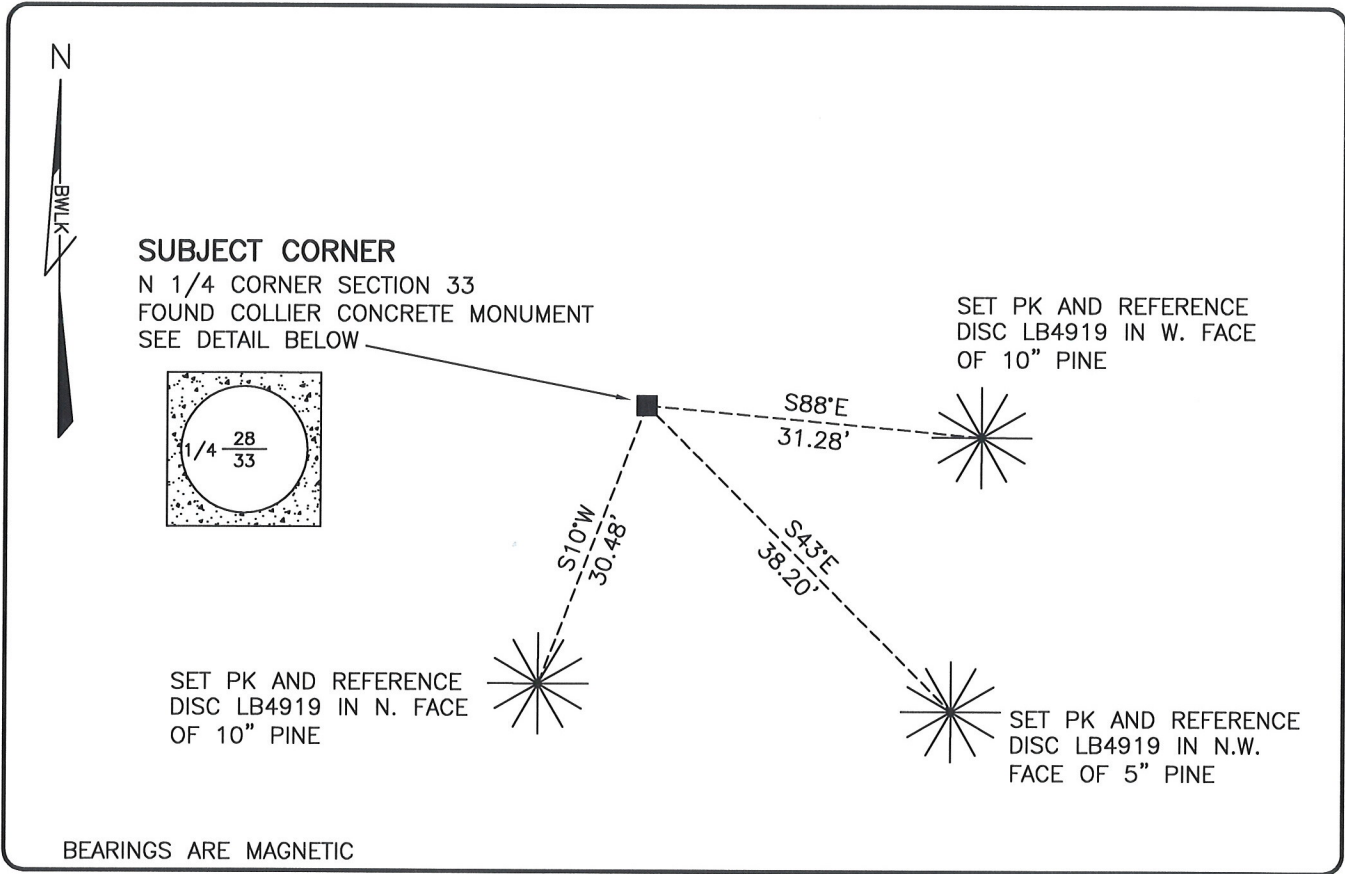


LAND CORNER RECORD

**PUBLIC WORKS
LEE COUNTY, FLORIDA**

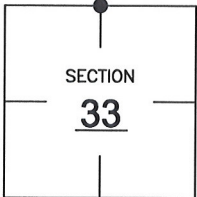
Address - 1500 Monroe St., Ft. Myers, Fla. 33901 Phone : (239) 479-8900



COMMENTS:
FOUND SUBJECT CORNER IN HARMONY WITH HISTORICAL RECORDS AND THE PLAT OF CORKSCREW WOODS INSTRUMENT NUMBER 2007000289772.

CORNER DESCRIPTION

N 1/4 Corner
Section 33
Township 46
Range 26



HORIZONTAL POSITION INFORMATION

Florida West Zone, NAD 1983(2007 Adjustment)
Northing(ft) 763995.25 Easting(ft) 749077.90
Latitude 26°26'06.9337" Longitude 81°42'57.8467"
Scale Factor 0.99995

EXISTING CERTIFIED CORNER RECORDS

Document No.	Date
<u>9362</u>	_____
_____	_____
_____	_____
_____	_____
_____	_____

The above documents are based on FDEP Bureau of Surveying and Mapping Record Information.

I hereby certify the monument and accessories shown above were field located on 3-21-08.

Scott C. Whitaker
SCOTT C. WHITAKER
Professional Surveyor and Mapper
Florida Certificate No. 4324
Date Signed 5/30/08

BEAN, WHITAKER, LUTZ & KAREH, INC. (LB 4919)
13041 McGregor Boulevard
Fort Myers, Florida 33919-5910
Phone: (239) 481-1331

POINT NO. 14015

BLM REFERENCE NO. T46SR26E340200