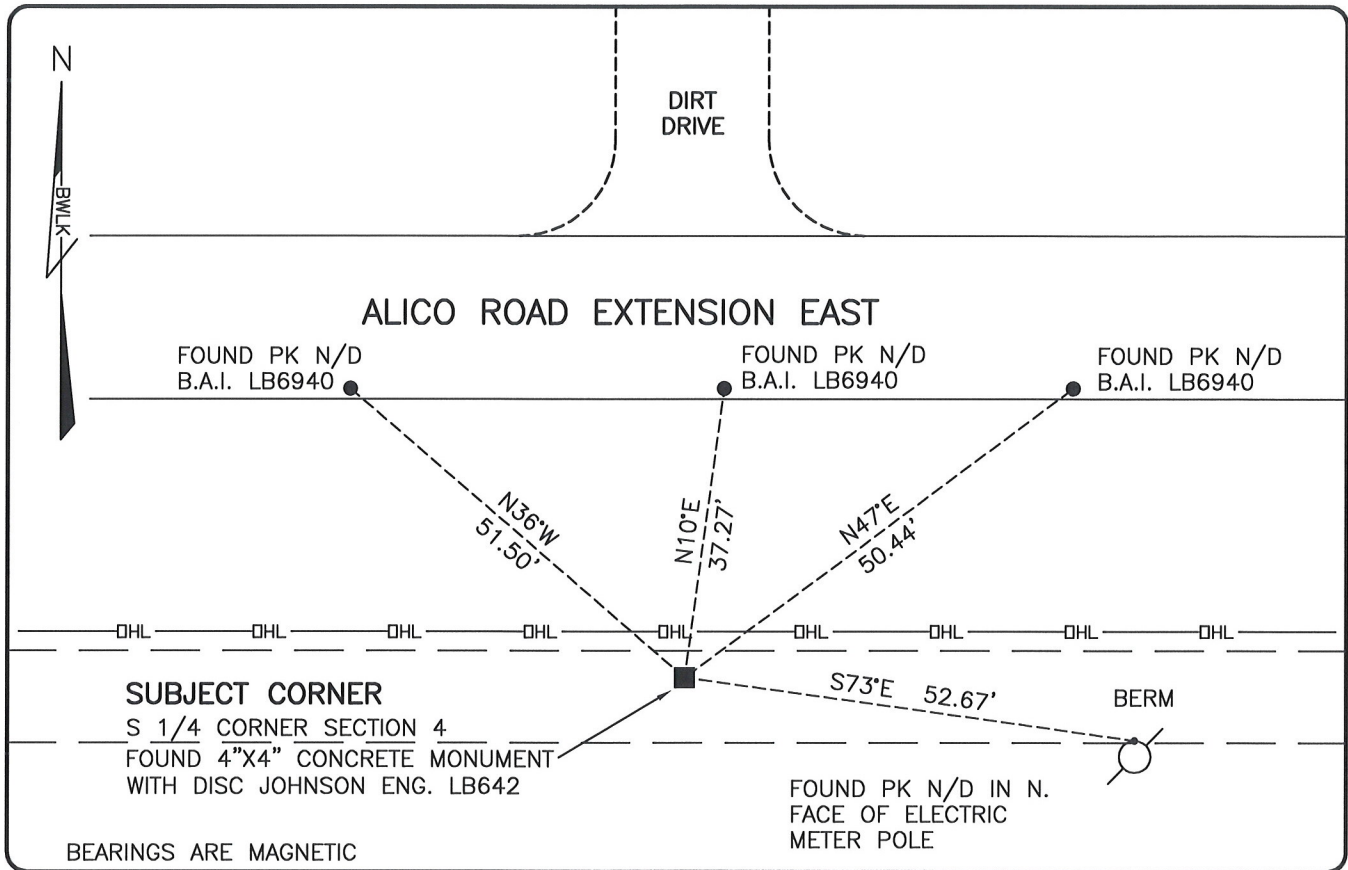


**LAND CORNER RECORD**

**PUBLIC WORKS  
LEE COUNTY, FLORIDA**

Address - 1500 Monroe St., Ft. Myers, Fla. 33901

Phone : (239) 479-8900



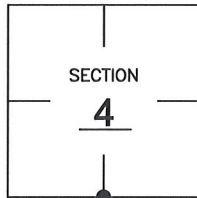
BEARINGS ARE MAGNETIC

**COMMENTS:**

FOUND SUBJECT CORNER AND ONE REFERENCE IN HARMONY WITH CCR 41720. FOUND THREE NEW REFERENCES.

**CORNER DESCRIPTION**

S 1/4 Corner  
Section 4  
Township 46  
Range 26



**HORIZONTAL POSITION INFORMATION**

Florida West Zone, NAD 1983(2007 Adjustment)  
Northing(ft) 785370.17 Easting(ft) 748683.68  
Latitude 26°29'38.6431" Longitude 81°43'01.6663"  
Scale Factor 0.99995

**EXISTING CERTIFIED CORNER RECORDS**

| Document No. | Date           |
|--------------|----------------|
| <u>41720</u> | <u>9-20-91</u> |
| <u>34022</u> | <u>11-9-89</u> |
|              |                |
|              |                |
|              |                |

The above documents are based on FDEP Bureau of Surveying and Mapping Record Information.

I hereby certify the monument and accessories shown above were field located on 3-20-08.

*Scott C. Whitaker*  
**SCOTT C. WHITAKER**  
Professional Surveyor and Mapper  
Florida Certificate No. 4324  
Date Signed 5/30/08

BEAN, WHITAKER, LUTZ & KAREH, INC. (LB 4919)  
13041 McGregor Boulevard  
Fort Myers, Florida 33919-5910  
Phone: (239) 481-1331

POINT NO. 14013

BLM REFERENCE NO. T46SR26E340600