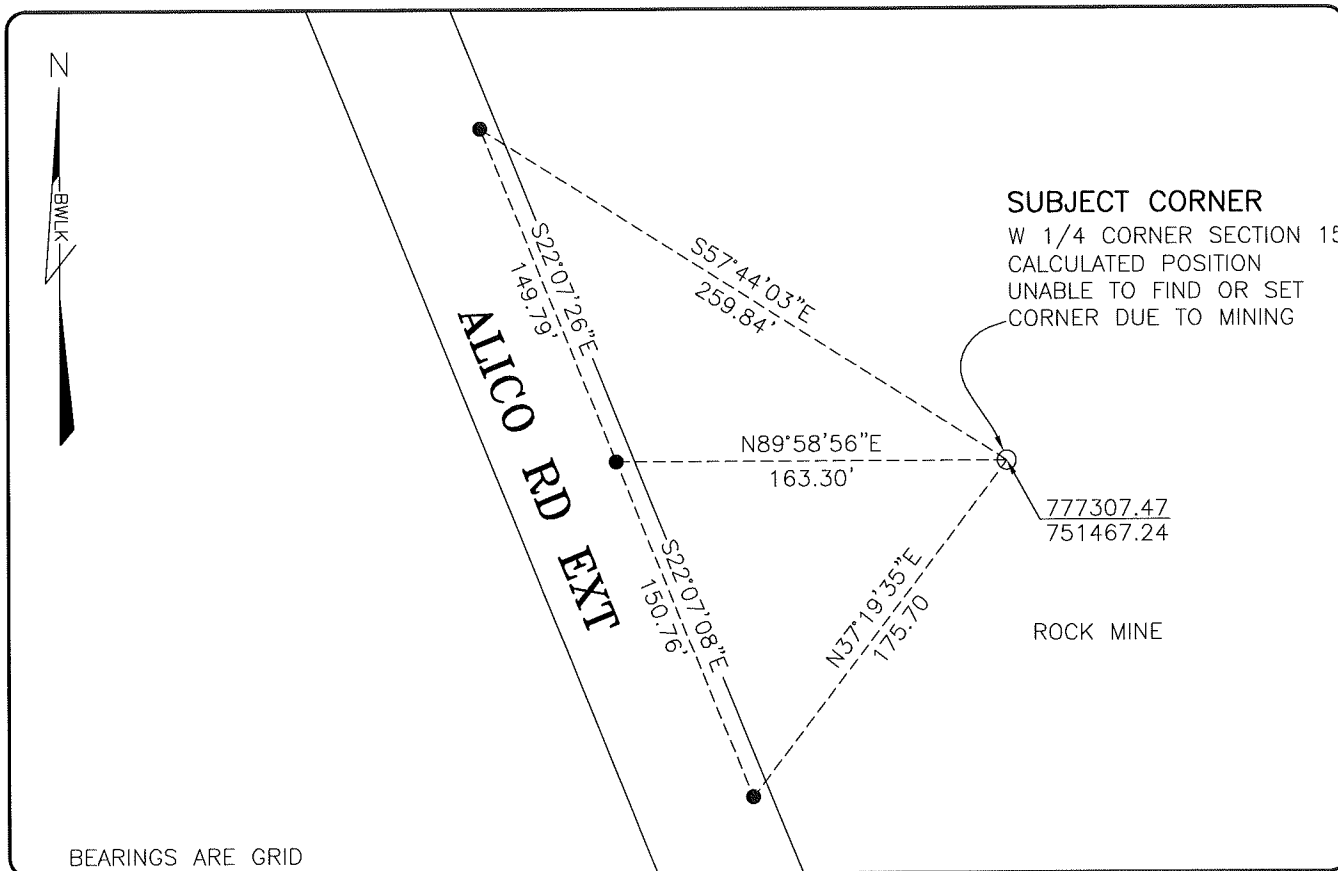


LAND CORNER RECORD

**PUBLIC WORKS
LEE COUNTY, FLORIDA**

Address - 1500 Monroe St., Ft. Myers, Fla. 33901

Phone : (239) 479-8900

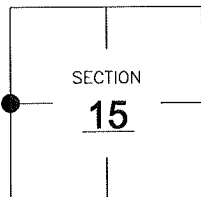


COMMENTS:

UNABLE TO FIND OR SET SUBJECT CORNER DUE TO MINING. CALCULATED POSITION BASED ON SINGLE PROPORTIONATE MEASUREMENT (SPLIT BETWEEN SECTION CORNERS). CONFORMS WITH OTHER HISTORICAL SURVEYS IN THIS FIRMS FILES.

CORNER DESCRIPTION

W 1/4 Corner
Section 15
Township 46
Range 26



HORIZONTAL POSITION INFORMATION

Florida West Zone, NAD 1983(2007 Adjustment)
 Northing(ft) 777307.47 Easting(ft) 751467.24
 Latitude 26°28'18.7274" Longitude 81°42'31.2292"
 Scale Factor 0.99995

EXISTING CERTIFIED CORNER RECORDS

Document No.	Date
<u>28377</u>	<u>3-4-88</u>

The above documents are based on FDEP Bureau of Surveying and Mapping Record Information.

I hereby certify the monument and accessories shown above were field located on 12-9-08.

Scott C. Whitaker

SCOTT C. WHITAKER
 Professional Surveyor and Mapper
 Florida Certificate No. 4324
 Date Signed 2/2/09

BEAN, WHITAKER, LUTZ & KAREH, INC. (LB 4919)
 13041 McGregor Boulevard
 Fort Myers, Florida 33919-5910
 Phone: (239) 481-1331

POINT NO. 14099

BLM REFERENCE NO. T46SR26E400440