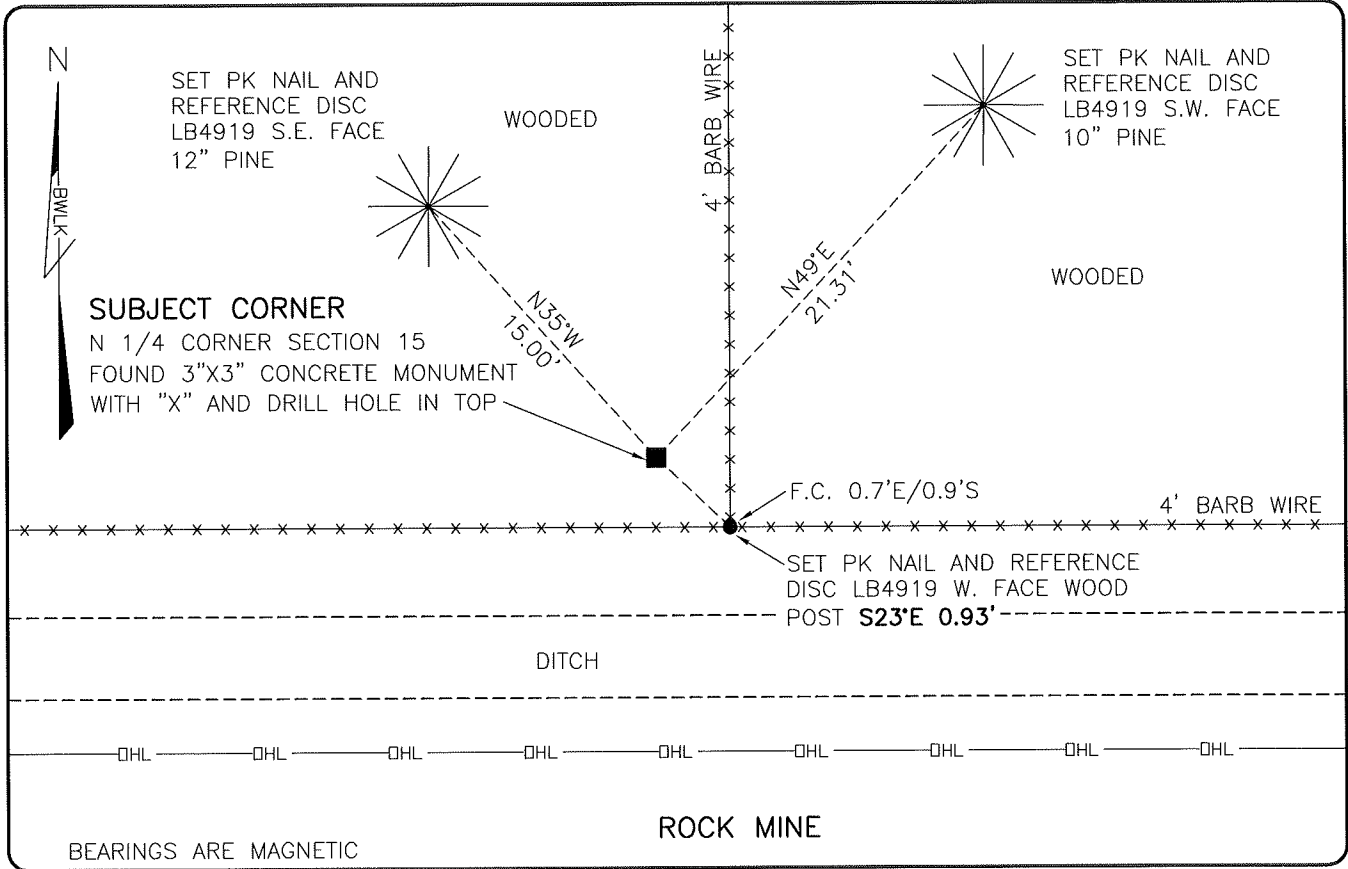


LAND CORNER RECORD

**PUBLIC WORKS
LEE COUNTY, FLORIDA**

Address - 1500 Monroe St., Ft. Myers, Fla. 33901

Phone : (239) 479-8900

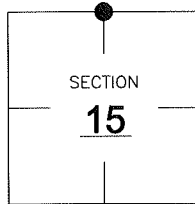


COMMENTS:

FOUND SUBJECT CORNER IN HARMONY WITH HISTORICAL RECORDS.

CORNER DESCRIPTION

N 1/4 Corner
Section 15
Township 46
Range 26



HORIZONTAL POSITION INFORMATION

Florida West Zone, NAD 1983(2007 Adjustment)
 Northing(ft) 779972.03 Easting(ft) 754069.63
 Latitude 26°28'45.0583" Longitude 81°42'02.5223"
 Scale Factor 0.99995

EXISTING CERTIFIED CORNER RECORDS

| Document No. | Date |
|--------------|---------------|
| <u>28534</u> | <u>4-8-88</u> |
| | |
| | |
| | |

The above documents are based on FDEP Bureau of Surveying and Mapping Record Information.

I hereby certify the monument and accessories shown above were field located on 1-8-09

Scott C. Whitaker

SCOTT C. WHITAKER
 Professional Surveyor and Mapper
 Florida Certificate No. 4324
 Date Signed 2/2/09

BEAN, WHITAKER, LUTZ & KAREH, INC. (LB 4919)
 13041 McGregor Boulevard
 Fort Myers, Florida 33919-5910
 Phone: (239) 481-1331

POINT NO. 14103

BLM REFERENCE NO. T46SR26E440500