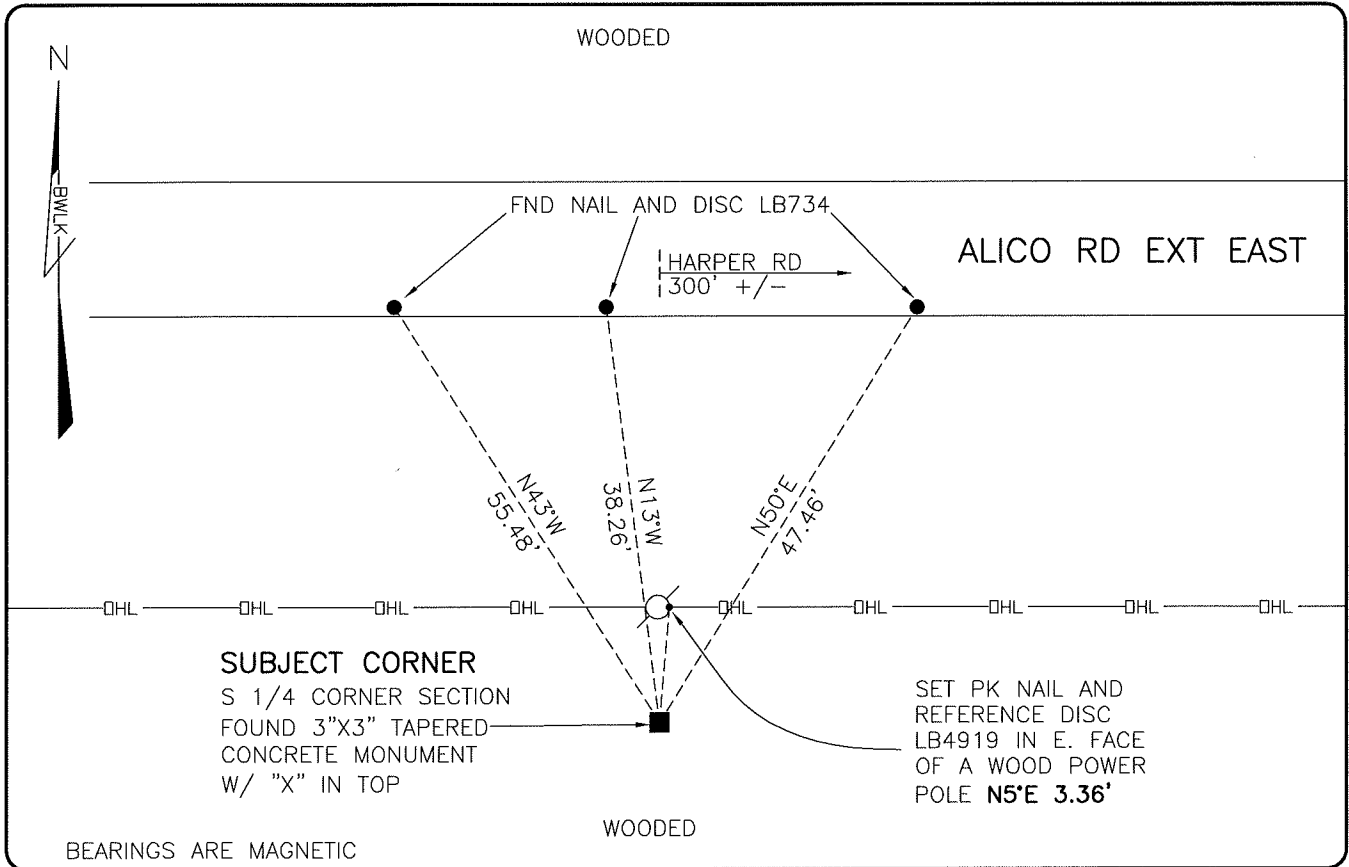


LAND CORNER RECORD

**PUBLIC WORKS
LEE COUNTY, FLORIDA**

Address - 1500 Monroe St., Ft. Myers, Fla. 33901

Phone : (239) 479-8900



SUBJECT CORNER
S 1/4 CORNER SECTION
FOUND 3"X3" TAPERED
CONCRETE MONUMENT
W/ "X" IN TOP

SET PK NAIL AND
REFERENCE DISC
LB4919 IN E. FACE
OF A WOOD POWER
POLE N5°E 3.36'

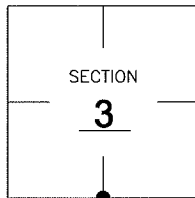
BEARINGS ARE MAGNETIC

COMMENTS:

FOUND SUBJECT CORNER IN HARMONY WITH HISTORICAL RECORDS AND CCR 34024.

CORNER DESCRIPTION

S 1/4 Corner
Section 3
Township 46
Range 26



HORIZONTAL POSITION INFORMATION

Florida West Zone, NAD 1983(2007 Adjustment)

Northing(ft) 785252.70 Easting(ft) 753981.80

Latitude 26°29'37.3607" Longitude 81°42'03.3536"

Scale Factor 0.99995

EXISTING CERTIFIED CORNER RECORDS

Document No.	Date
<u>34024</u>	<u>11-9-89</u>

The above documents are based on FDEP Bureau of Surveying and Mapping Record Information.

I hereby certify the monument and accessories shown above were field located on 5-29-08.

Scott C. Whitaker

SCOTT C. WHITAKER
Professional Surveyor and Mapper
Florida Certificate No. 4324
Date Signed 7/1/08

BEAN, WHITAKER, LUTZ & KAREH, INC. (LB 4919)
13041 McGregor Boulevard
Fort Myers, Florida 33919-5910
Phone: (239) 481-1331

POINT NO. 14046

BLM REFERENCE NO. T46SR26E440600