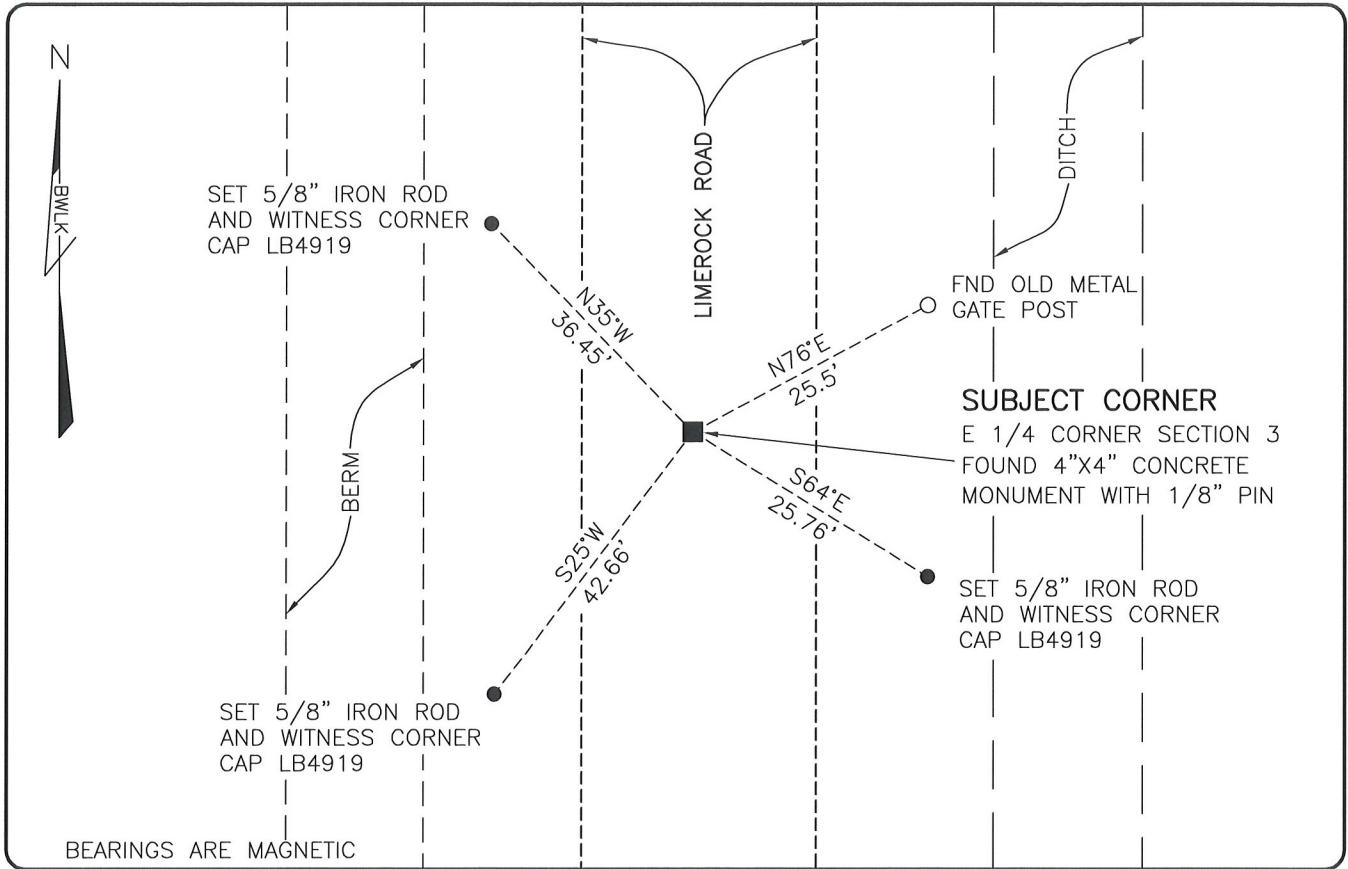


LAND CORNER RECORD

**PUBLIC WORKS
LEE COUNTY, FLORIDA**

Address - 1500 Monroe St., Ft. Myers, Fla. 33901

Phone : (239) 479-8900



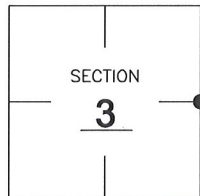
BEARINGS ARE MAGNETIC

COMMENTS:

FOUND SUBJECT CORNER IN HARMONY WITH HISTORICAL RECORDS.

CORNER DESCRIPTION

E 1/4 Corner
 Section 3
 Township 46
 Range 26



HORIZONTAL POSITION INFORMATION

Florida West Zone, NAD 1983(2007 Adjustment)
 Northing(ft) 788533.75 Easting(ft) 756546.87
 Latitude 26°30'09.7966" Longitude 81°41'35.0340"
 Scale Factor 0.99995

EXISTING CERTIFIED CORNER RECORDS

Document No.	Date
<u>41723</u>	<u>9-18-91</u>
<u>13800</u>	<u>7-1-81</u>

The above documents are based on FDEP Bureau of Surveying and Mapping Record Information.

I hereby certify the monument and accessories shown above were field located on 7-14-08.

Scott C. Whitaker

SCOTT C. WHITAKER
 Professional Surveyor and Mapper
 Florida Certificate No. 4324
 Date Signed 7/29/08

BEAN, WHITAKER, LUTZ & KAREH, INC. (LB 4919)
 13041 McGregor Boulevard
 Fort Myers, Florida 33919-5910
 Phone: (239) 481-1331

POINT NO. 14082

BLM REFERENCE NO. T46SR26E500640