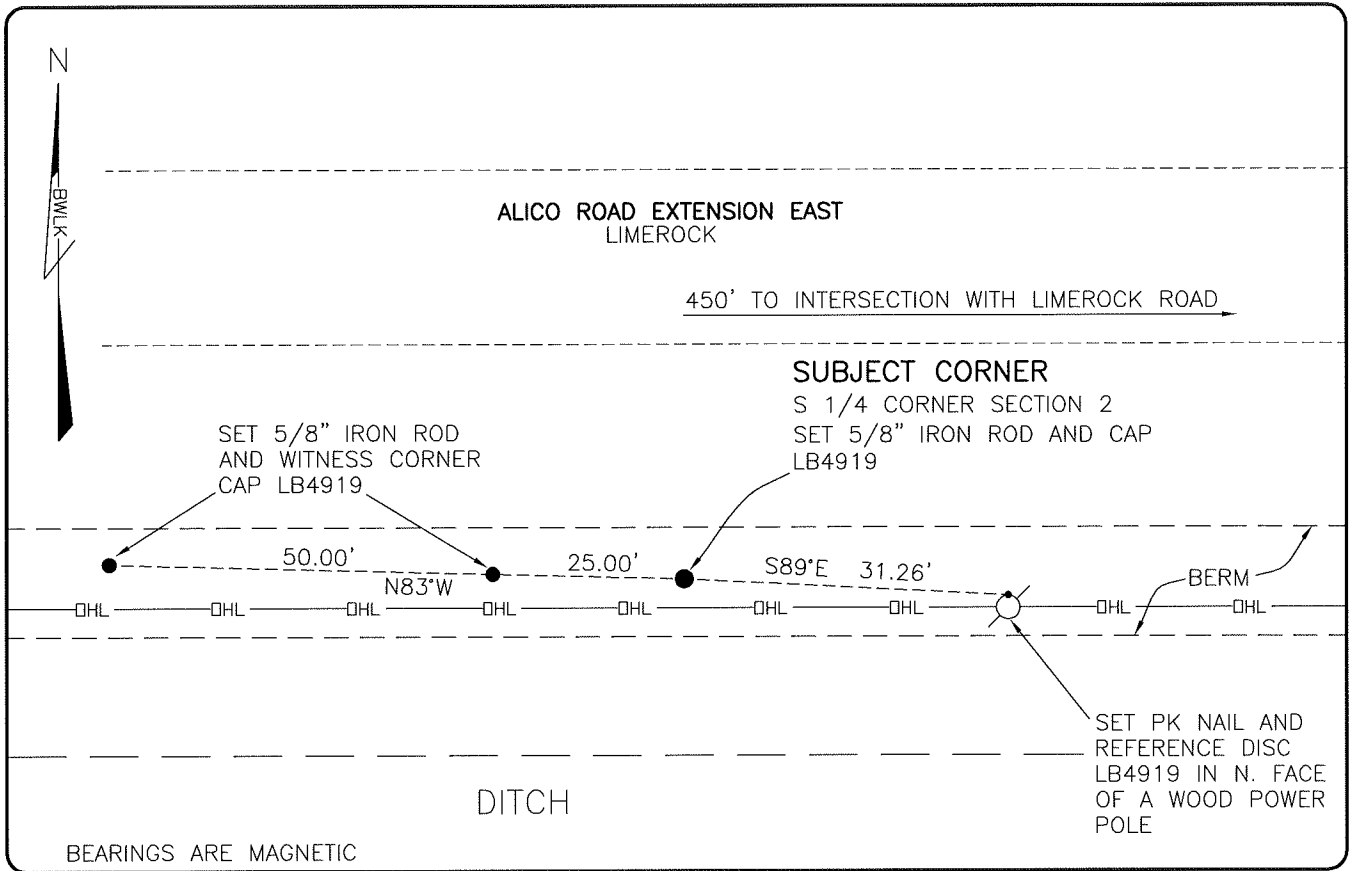


LAND CORNER RECORD

**PUBLIC WORKS
LEE COUNTY, FLORIDA**

Address - 1500 Monroe St., Ft. Myers, Fla. 33901

Phone : (239) 479-8900

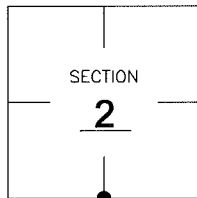


COMMENTS:

CORNER AND REFERENCES WERE DESTROYED BY CONSTRUCTION. RESET SUBJECT CORNER BASED ON SINGLE PROPORTIONATE MEASURE (SPLIT BETWEEN SECTION CORNERS). THIS WAS CONSISTENT WITH HISTORICAL SURVEY BY STARNES DATED 4-06-81.

CORNER DESCRIPTION

S 1/4 Corner
Section 2
Township 46
Range 26



HORIZONTAL POSITION INFORMATION

Florida West Zone, NAD 1983(2007 Adjustment)
Northing(ft) 785232.24 Easting(ft) 759272.43
Latitude 26°29'37.0328" Longitude 81°41'05.1211"
Scale Factor 0.99995

EXISTING CERTIFIED CORNER RECORDS

Document No.	Date
<u>14725</u>	<u>7-1-81</u>

The above documents are based on FDEP Bureau of Surveying and Mapping Record Information.

I hereby certify the monument and accessories shown above were field located on 6-2-08.

Scott C. Whitaker

SCOTT C. WHITAKER
Professional Surveyor and Mapper
Florida Certificate No. 4324
Date Signed 7/2/08

BEAN, WHITAKER, LUTZ & KAREH, INC. (LB 4919)
13041 McGregor Boulevard
Fort Myers, Florida 33919-5910
Phone: (239) 481-1331

POINT NO. 14050

BLM REFERENCE NO. T46SR26E540600