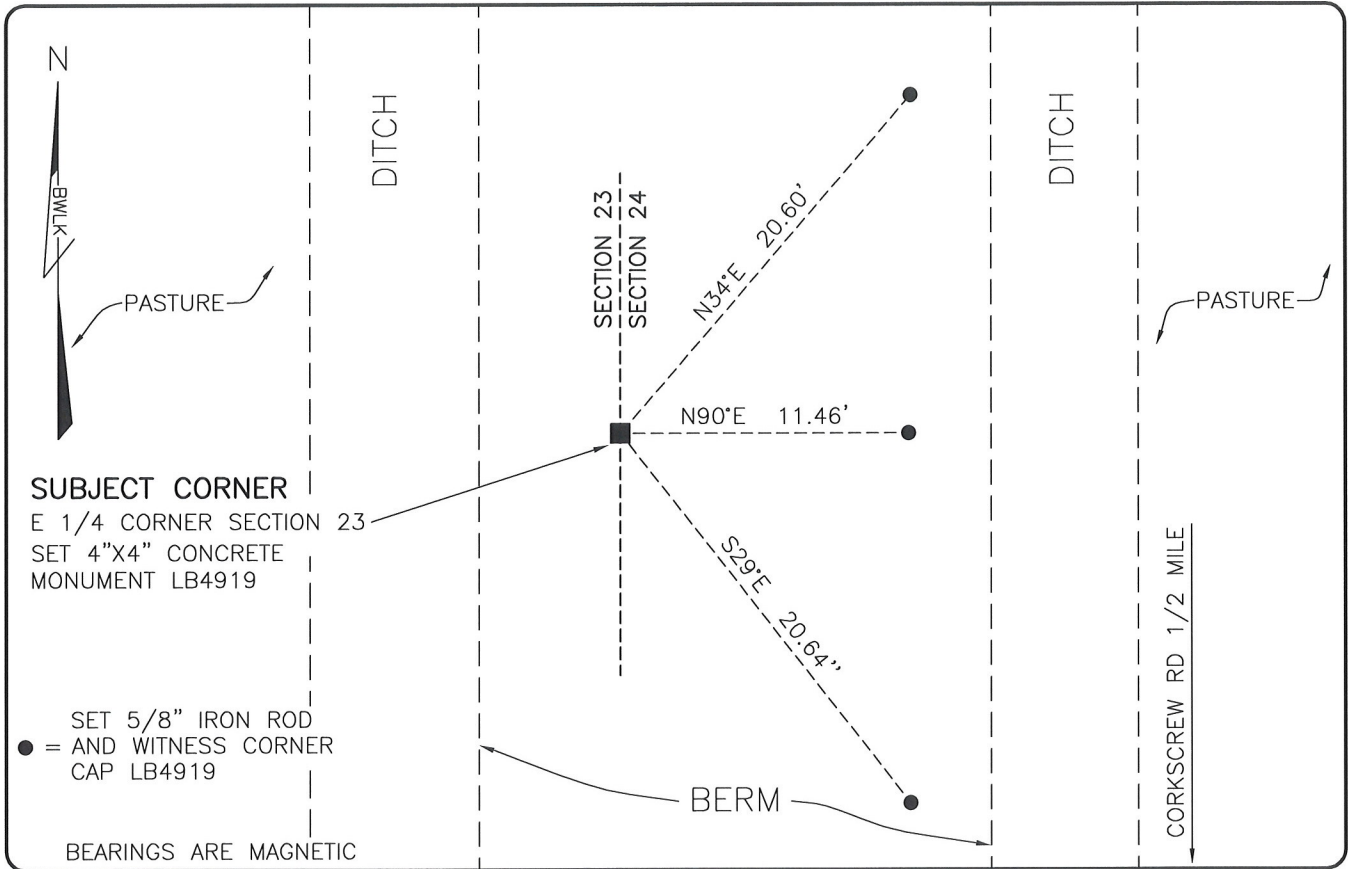


LAND CORNER RECORD

**PUBLIC WORKS
LEE COUNTY, FLORIDA**

Address - 1500 Monroe St., Ft. Myers, Fla. 33901

Phone : (239) 479-8900



SUBJECT CORNER
E 1/4 CORNER SECTION 23
SET 4"x4" CONCRETE
MONUMENT LB4919

● = SET 5/8" IRON ROD
AND WITNESS CORNER
CAP LB4919

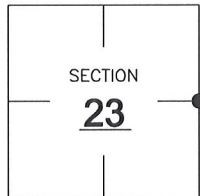
BEARINGS ARE MAGNETIC

COMMENTS:

SET SUBJECT CORNER BASED ON HISTORICAL RECORDS. FOUND REMAINS OF OLD BARB WIRE FENCE AND PIECE OF CONCRETE MONUMENT IN VICINITY OF CORNER.

CORNER DESCRIPTION

E 1/4 Corner
Section 23
Township 46
Range 26



HORIZONTAL POSITION INFORMATION

Florida West Zone, NAD 1983(2007 Adjustment)

Northing(ft) 772046.54 Easting(ft) 762178.61

Latitude 26°27'26.3685" Longitude 81°40'33.4993"

Scale Factor 0.99995

EXISTING CERTIFIED CORNER RECORDS

Document No.	Date

The above documents are based on FDEP Bureau of Surveying and Mapping Record Information.

I hereby certify the monument and accessories shown above were field located on 7-23-08.

Scott C. Whitaker

SCOTT C. WHITAKER
Professional Surveyor and Mapper
Florida Certificate No. 4324
Date Signed 7/29/08

BEAN, WHITAKER, LUTZ & KAREH, INC. (LB 4919)
13041 McGregor Boulevard
Fort Myers, Florida 33919-5910
Phone: (239) 481-1331

POINT NO. 14089

BLM REFERENCE NO. T46SR26E600340