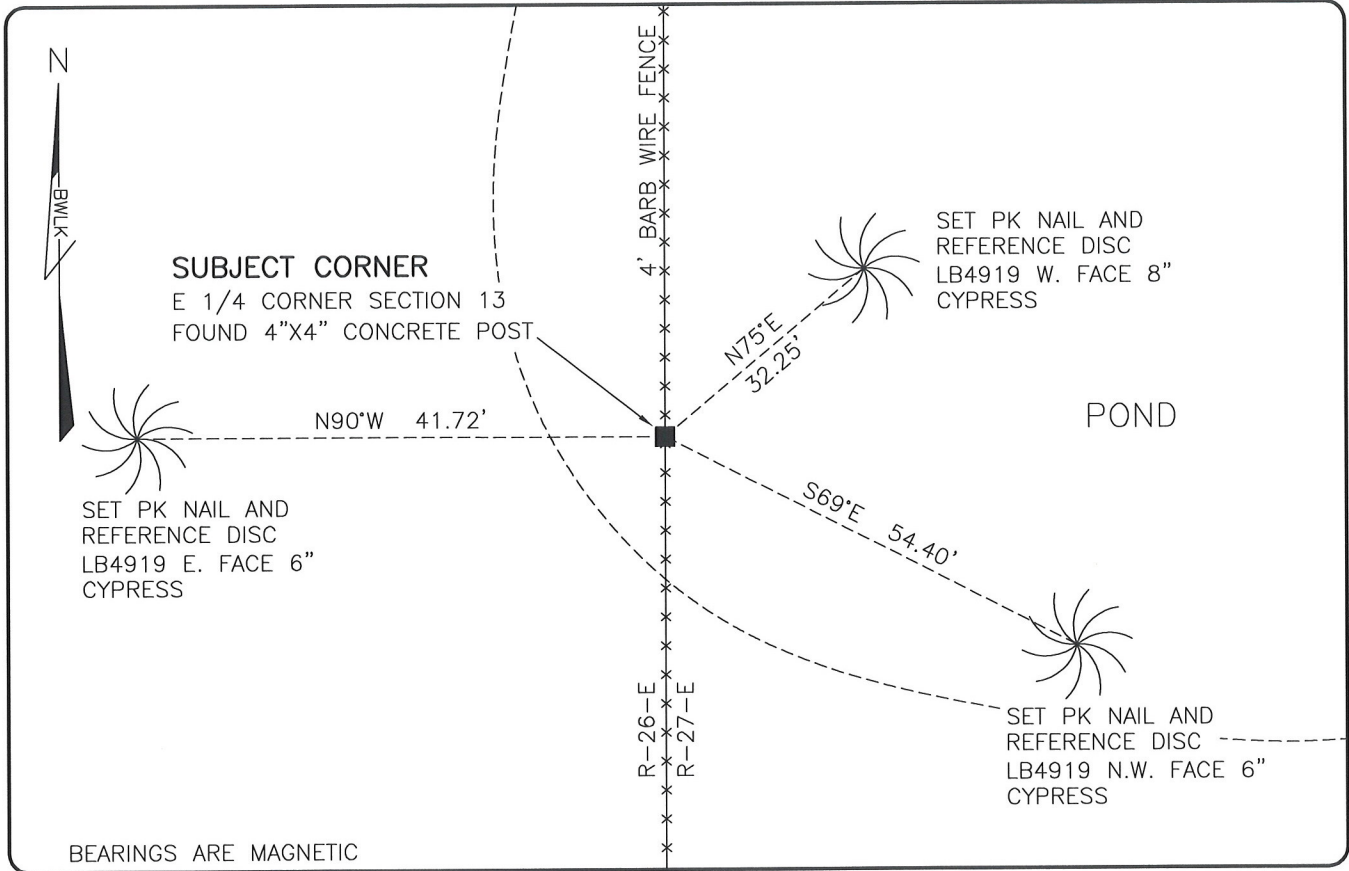


**LAND CORNER RECORD**

**PUBLIC WORKS  
LEE COUNTY, FLORIDA**

Address - 1500 Monroe St., Ft. Myers, Fla. 33901

Phone : (239) 479-8900

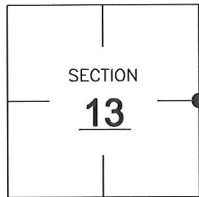


**COMMENTS:**

FOUND SUBJECT CORNER IN HARMONY WITH HISTORICAL RECORDS.

**CORNER DESCRIPTION**

E 1/4 Corner  
Section 13  
Township 46  
Range 26



**HORIZONTAL POSITION INFORMATION**

Florida West Zone, NAD 1983(2007 Adjustment)

Northing(ft) 777426.89 Easting(ft) 767351.27

Latitude 26°28'19.5239" Longitude 81°39'36.4263"

Scale Factor 0.99995

**EXISTING CERTIFIED CORNER RECORDS**

Document No.	Date
<u>6514</u>	<u>4-9-80</u>

The above documents are based on FDEP Bureau of Surveying and Mapping Record Information.

I hereby certify the monument and accessories shown above were field located on 7-22-08.

*Scott C. Whitaker*

**SCOTT C. WHITAKER**  
Professional Surveyor and Mapper  
Florida Certificate No. 4324  
Date Signed 7/24/08

BEAN, WHITAKER, LUTZ & KAREH, INC. (LB 4919)  
13041 McGregor Boulevard  
Fort Myers, Florida 33919-5910  
Phone: (239) 481-1331

POINT NO. 14085

BLM REFERENCE NO. T46SR26E700440