

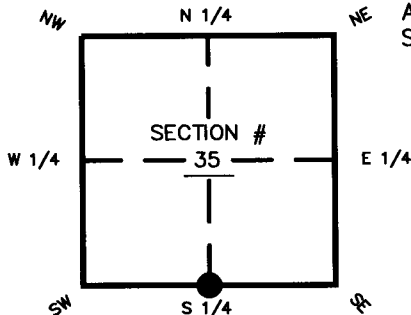
# FLORIDA DEPARTMENT OF ENVIRONMENTAL PROTECTION CERTIFIED CORNER RECORD

DOC. # 096711

**CORNER DESCRIPTION:**      MONUMENTATION DESCRIPTION (EVIDENCE FOUND OR METHOD TO SET)

Depict corner with  ●

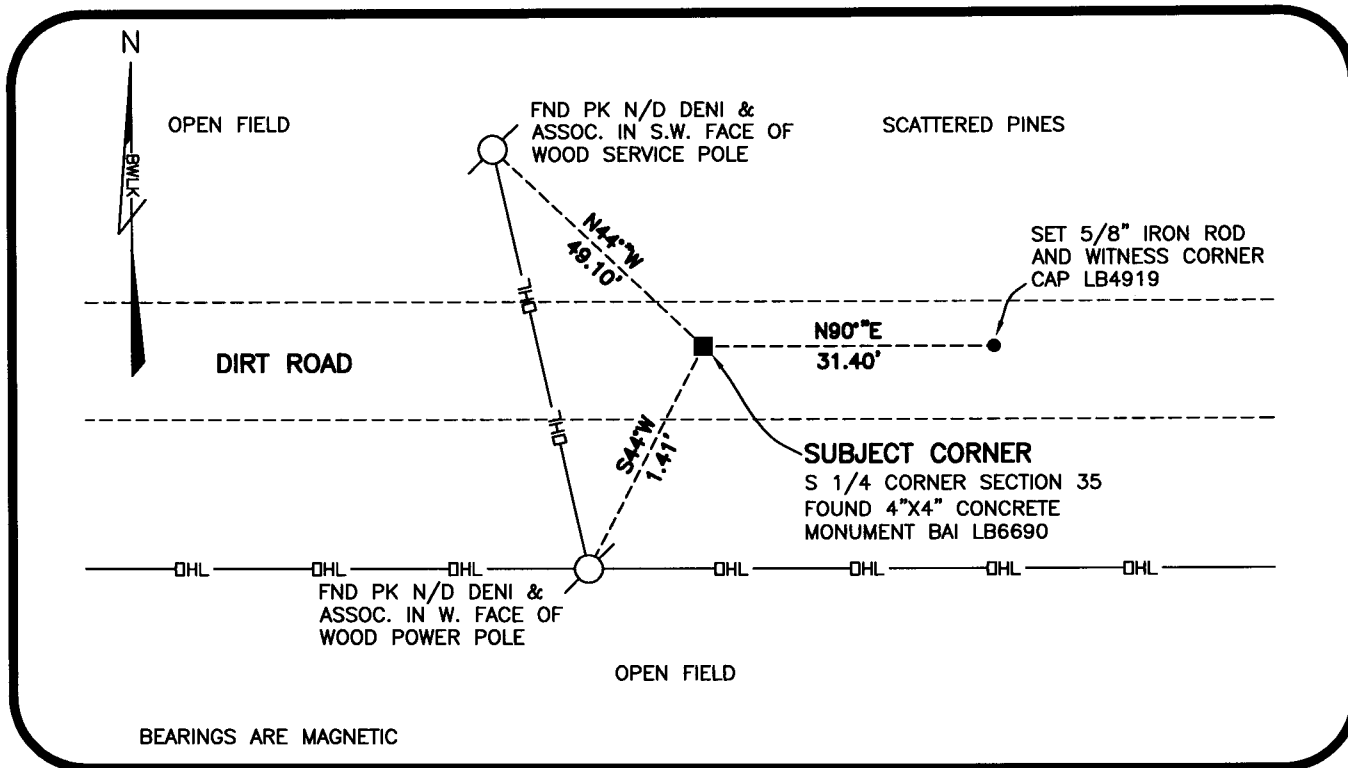
FOUND SUBJECT CORNER IN HARMONY WITH HISTORICAL RECORDS. APPEARS TO HAVE BEEN ORIGINALLY SET BY JOHN AMEY IN 1961 AND PERPETUATED SINCE THAT TIME. THIS CORNER WAS NOT SURVEYED BY THE GLO.



S 1/4 corner of Section 35  
Twp 46 S, Rge 26 E  
Tallahassee Base Meridian,  
LEE County(s), Florida

HORIZONTAL POSITION INFORMATION ( if determined ):

Latitude 26°19'55.8015"      Longitude 81°40'56.2440"  
Y(NORTHING-Ft.) 726549.27      X(EASTING-Ft.) 760223.70      Zone FLW  
Convergence \_\_\_\_\_      Scale factor 0.99995  
Coordinate determination (circle one):      Field traverse  GPS  
Horizontal datum (circle one):      NAD27      NAD83(1986)      NAD83(1990)       NAD83(2007)  
Accuracy (circle one):      1st      2nd       3rd      other \_\_\_\_\_



BEARINGS ARE MAGNETIC

SURVEYORS CERTIFICATE:

I certify the monument and accessories indicated above were field located on 1-7-09

*[Signature]*  
SIGNATURE \_\_\_\_\_ 4324  
BEAN, WHITAKER, LUTZ & KAREH PSM NO. 4919  
FIRM OR AGENCY LB NO. \_\_\_\_\_  
13041 MCGREGOR BLVD  
STATE ADDRESS \_\_\_\_\_  
FORT MYERS FLORIDA 33919  
CITY STATE ZIP  
(239) 481-1331 DATE 2/6/09  
PHONE NUMBER DATE

SEND ORIGINAL TO:  
Department of Environmental Protection  
Bureau of Surveying and Mapping  
3900 Commonwealth Boulevard  
Mail Station 105  
Tallahassee, Florida 32399

D.E.P. USE ONLY

Processed: 03-12-09 JH  
B.L.M. - I.D. 540100  
QUAD - I.D. 2014 CORKSCREW NW

EMBOSSSED SEAL OVER SIGNATURE