

FLORIDA DEPARTMENT OF ENVIRONMENTAL PROTECTION CERTIFIED CORNER RECORD

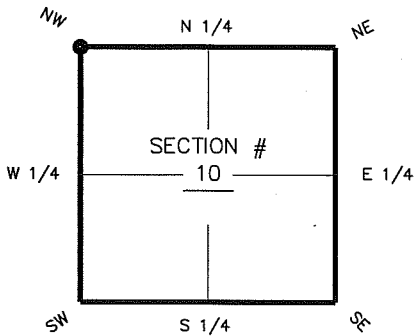
DOC. # _____

E-13

CORNER DESCRIPTION: MONUMENTATION DESCRIPTION (EVIDENCE FOUND OR METHOD TO SET)

Depict corner with ●

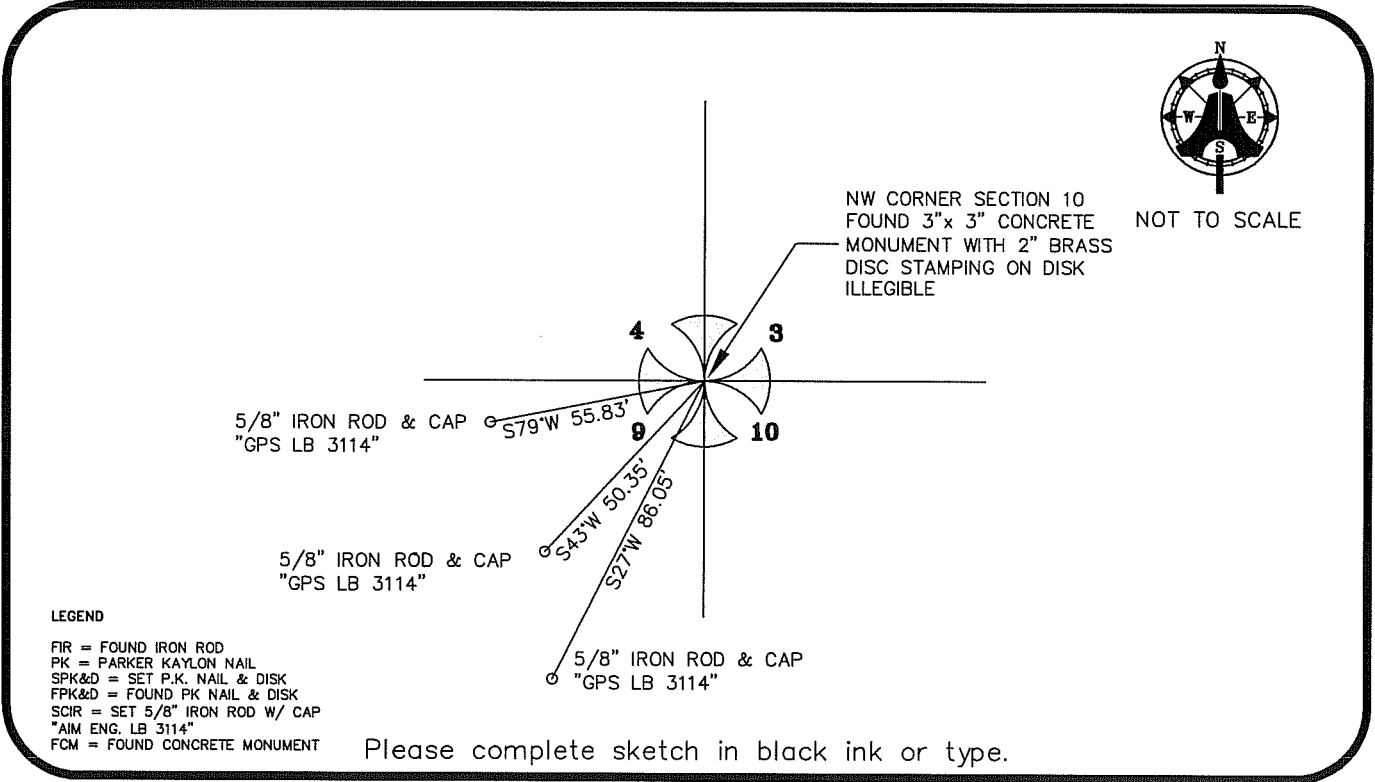
FOUND 3"x 3" CONCRETE MONUMENT WITH 2" BRASS DISC STAMPING ON DISK ILLEGIBLE.



NW corner of Section 10
Twp 46 S, Rge 27 E
Tallahassee Base Meridian,
LEE County(s), Florida

HORIZONTAL POSITION INFORMATION (if determined):

Latitude 26° 29' 40.0626" N Longitude 81° 36' 43.3160" W
Y(NORTHING-Ft.) 785603.27 X(EASTING-Ft.) 783057.17 Zone FL W
Convergence 00° 10' 23.1" Scale factor 0.99995964
Coordinate determination (circle one): Field traverse GPS
Horizontal datum (circle one): NAD27 NAD83(1986) NAD83(1986) other (explain)
Accuracy (circle one): 1st 2nd 3rd other NAD83(1999)



SURVEYORS CERTIFICATE:

I certify the monument and accessories indicated above were field located on FEB 20, 2007

SIGNATURE 5688 PSM NO.
AIM ENGINEERING & SURVEYING, INC. LB 3114
FIRM OR AGENCY LB NO.
5300 LEE BOULEVARD
ADDRESS
LEHIGH ACRES, FLORIDA 33971-1026
CITY STATE ZIP
(239) 332-4569 7/12/07
PHONE NUMBER DATE

SEND ORIGINAL TO:
Department of Environmental Protection
Bureau of Surveying and Mapping
3900 Commonwealth Boulevard
Mail Station 105
Tallahassee, Florida 32399

D.E.P. USE ONLY	
Processed:	_____
B.L.M. - I.D.	_____
QUAD - I.D.	_____

EMBOSSSED SEAL OVER SIGNATURE