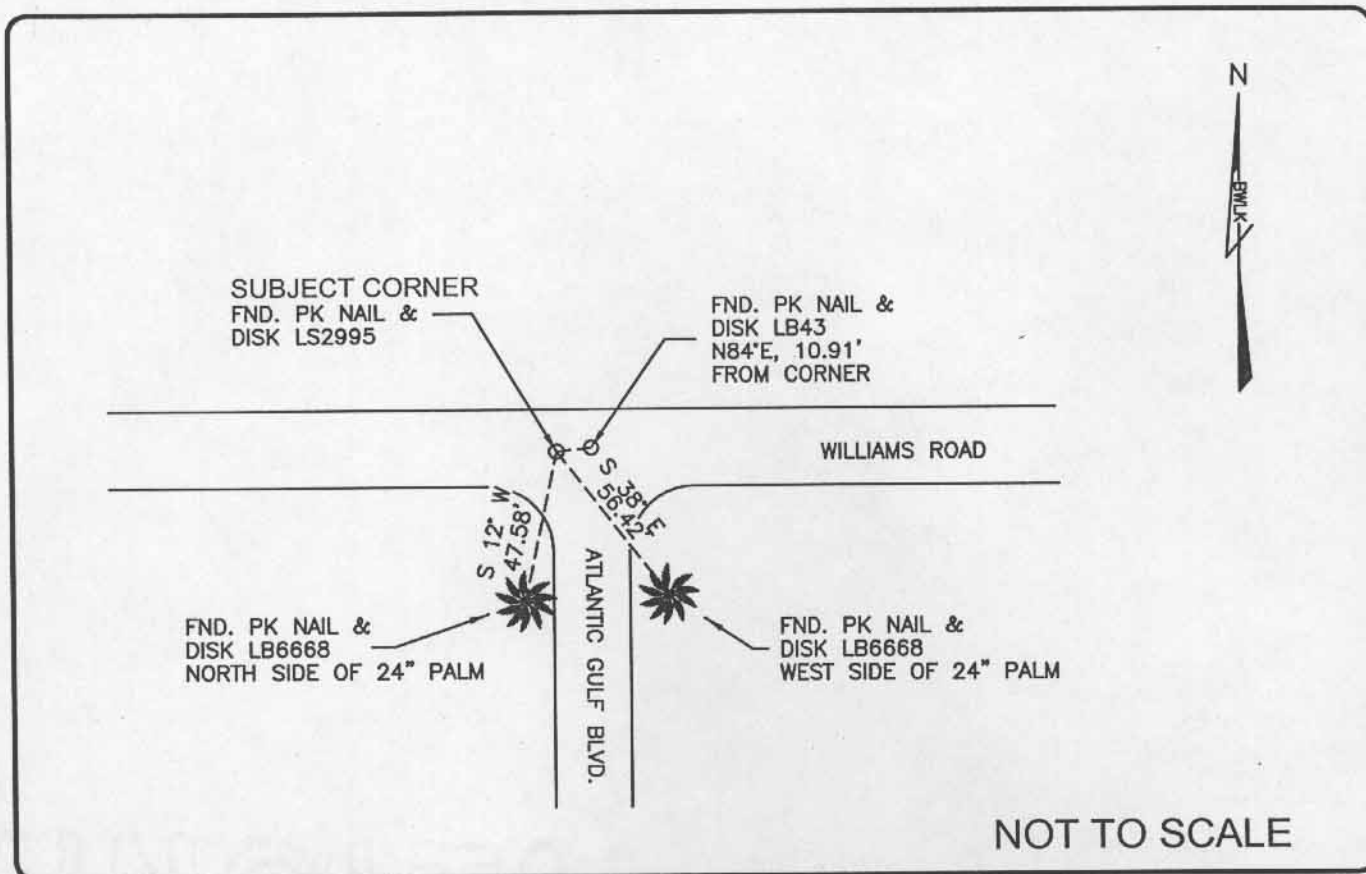


LAND CORNER RECORD

PUBLIC WORKS
LEE COUNTY, FLORIDA

Address - 1500 Monroe St., Ft. Myers, Fla. 33901

Phone : (239) 479-8900

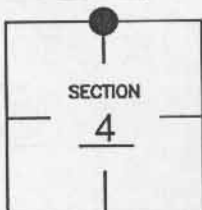


COMMENTS:

Recovered corner as described on CCR #65561.

CORNER DESCRIPTION

N 1/4 Corner
Section 4
Township 47
Range 25



HORIZONTAL POSITION INFORMATION

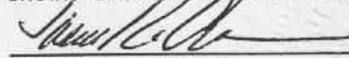
Florida West Zone, NAD 1983(1990 Adjustment)
Northing(ft) 758495.697 Easting(ft) 717458.197
Latitude 26°25'13.03796" N Longitude 81°48'45.79376" W
Scale Factor 0.999945484

EXISTING CERTIFIED CORNER RECORDS

Document No.	Date
9566	?
15293	11-01-82
19828	10-24-84
49810	10-03-84
65561	11-01-99

The above documents are based on FDEP Bureau of Surveying and Mapping Record Information.

I hereby certify the monument and accessories shown above were field located on 7-06-04.


JAMES R. COLEMAN
Registered Land Surveyor
Florida Certificate No. 3205
Date Signed 8-12-04

BEAN, WHITAKER, LUTZ & KAREH, INC. (LB 4919)
13041 McGregor Boulevard
Fort Myers, Florida 33919-5910
Phone: (239) 481-1331

COORDINATE NO. 8352

BLM REFERENCE NO. T47SR25E340700